

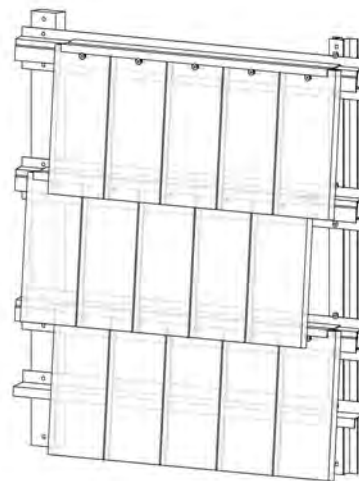
VIDAR CLAY SHINGLES – FARO

DATASHEET

Version 4, June 2018

GENERAL INFORMATION

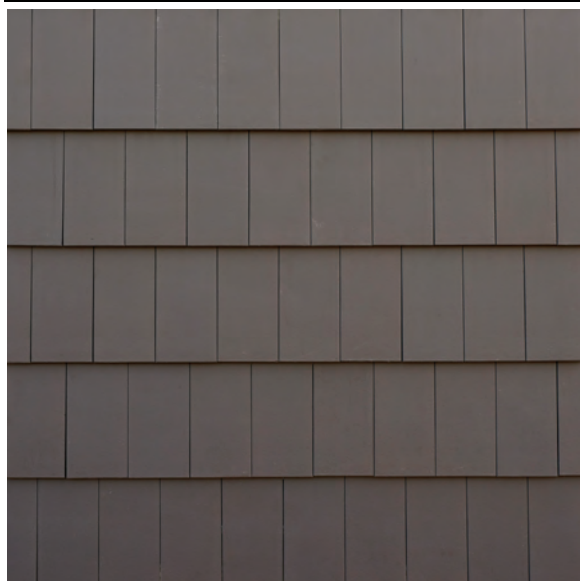
Product name	Vidar Clay Shingles FARO
Colour	Black
Surface	Smooth/grooved
Item no.	60-84-1
Packing	1140 pcs. per. euro pallet
Weight per shingle	Estimated 800 g/pcs
System weight per sqm	Estimated 39 kg/sqm
Pcs. per sqm	43 pcs.



TECHNICAL DATA

Water absorption	< 3,0 %
Size	240 mm x 113 mm x 14 mm (± 4 mm)
Fire class	A1 (Only the clay shingle)

PRODUCT PICTURES - See next page for larger pictures.



SURFACE A



SURFACE B

Reference facades, photographs and samples of Vidar should always be considered as guidelines. Colors and structures may vary.

KOMPROMENT
DANISH BUILDING DESIGN

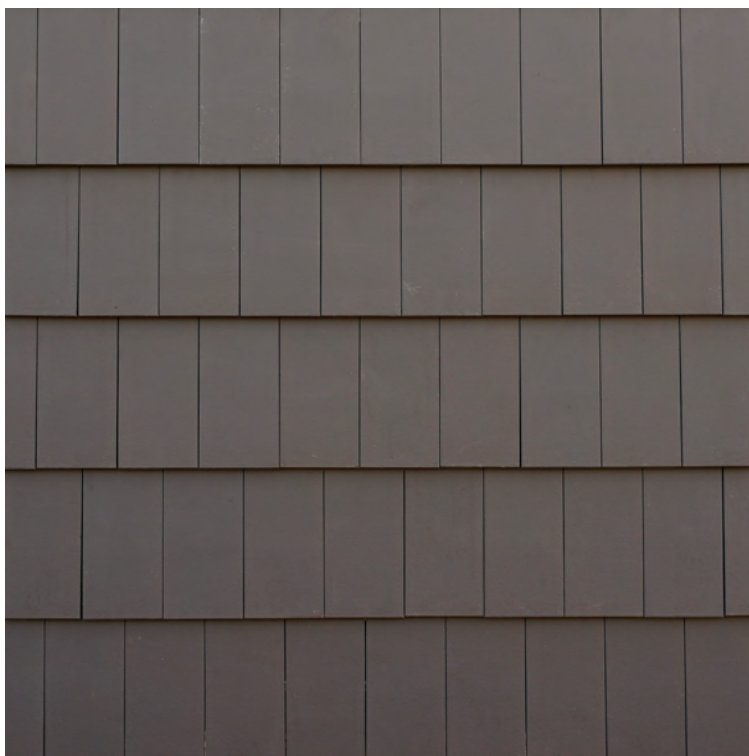
KOMPROMENT Danish Building Design · Jellingvej 11 · DK-9230 Svenstrup · Tel.: +45 96 52 07 10 · salg@komproment.dk · www.komproment.dk

VIDAR CLAY SHINGLES - FARO

DATASHEET

Version 4, June 2018

SURFACE A - Smooth



Reference facades, photographs and samples of Vidar should always be considered as guidelines. Colors and structures may vary.

SURFACE B - Grooved



Reference facades, photographs and samples of Vidar should always be considered as guidelines. Colors and structures may vary.

Due to the production method, pinholes will occur on surface B

KOMPROMENT
DANISH BUILDING DESIGN