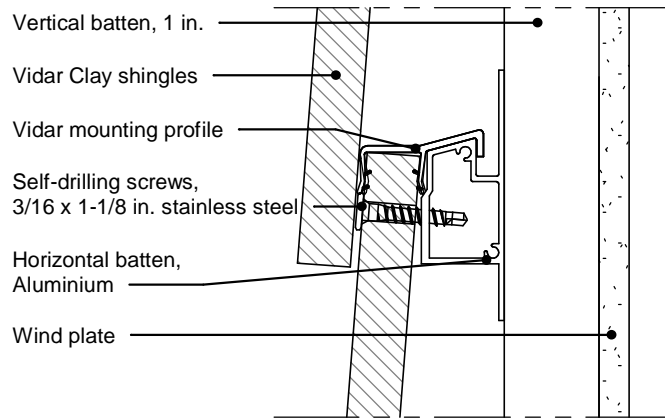
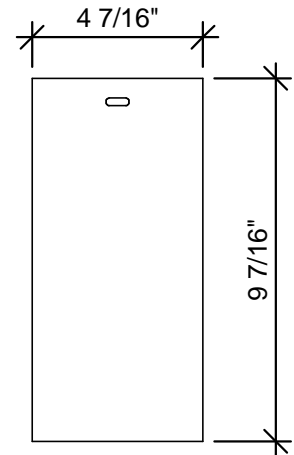


T-0 - Elevation
1 : 10

At the bottom, mount the starter batten in accordance with T-7 to offset tile thickness



T-0 - Vertical cut
6" = 1'-0"



T-0 - Clay Shingle
1 : 5

The drawing is not to scale.

Copyright © Komproment Danish Building Design

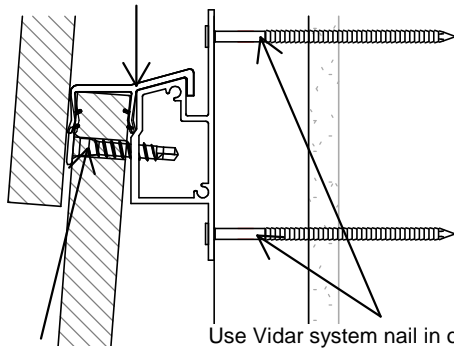
T-0	VIDAR		
Date: 19-02-2020	As indicated	VIDAR Clay Shingles	Tel.: +45 96520710 E-Mail: Export@komproment.dk Web: www.komproment.com

NOTE: Komproment makes these drawings available in the versions that currently exist. All use of the drawings is undertaken at own risk and liability. The drawings are regularly updated with relevant updates/changes on our website. You are responsible for keeping up-to-date with these changes. The drawings are made available in the following formats: PDF and DWG. All drawings are for guidance only. We make no guarantee that the drawings are suitable for all purposes.

KOMPROMENT
DANISH BUILDING DESIGN

- 1 Vidar Clay shingles
- 2 Vidar mounting profile
- 3 Self-drilling screw 3/16 x 1-1/8 in. Stainless steel
- 4 Horizontal batten Aluminium
- 5 Vertical batten, 1 in.
- 6 Wind plate

Mounting profile for mounting of clay shingles on Vidar system batten. Mounting profile also functions as noise-reducing element.



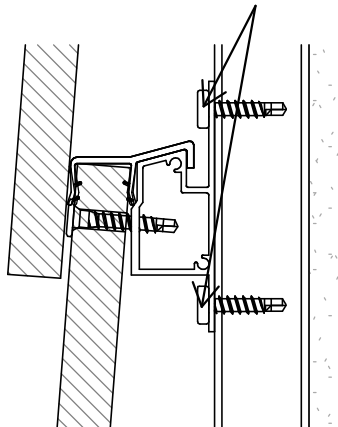
Vidar screw 3/16 x 1-1/8 in.

Use Vidar system nail in order to attach system batten. Please ensure that head of nail is tightened against system batten.

T-1 - Fastening on wood construction

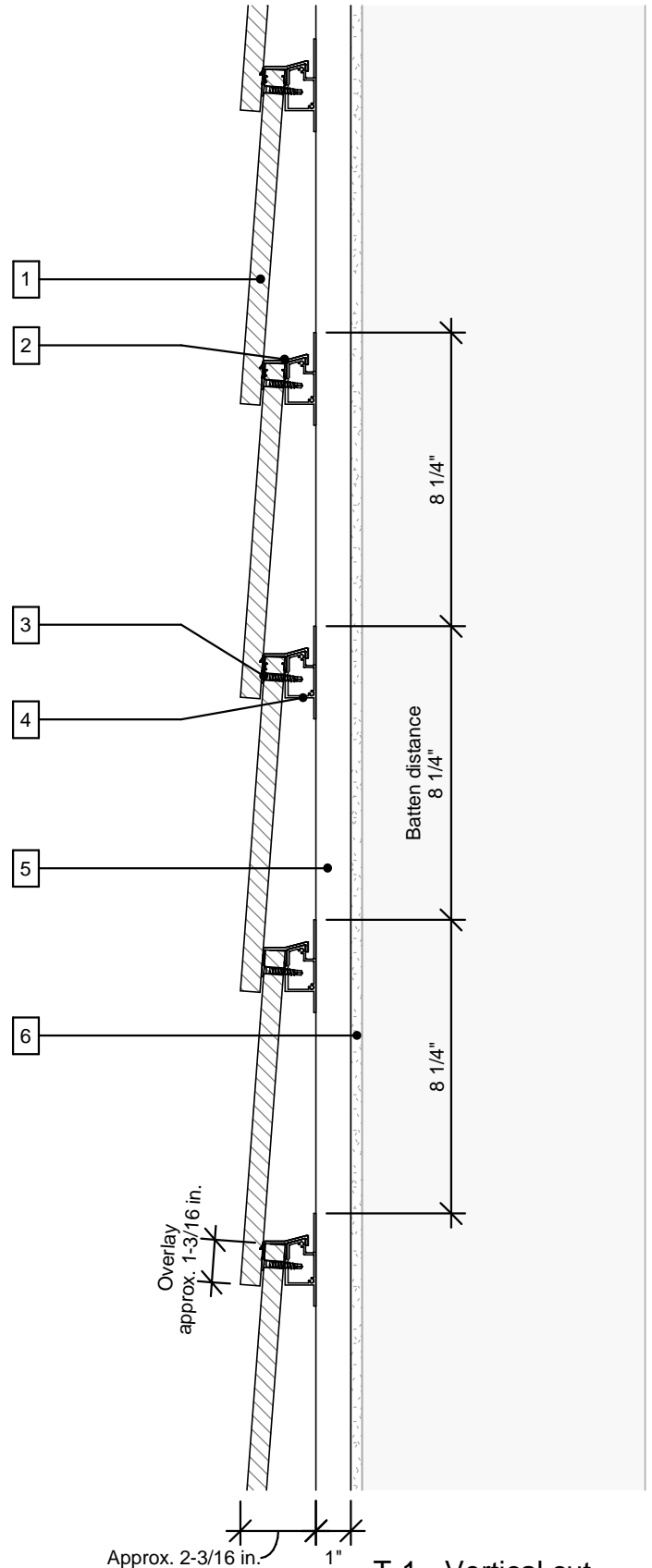
6" = 1'-0"

Fastening on vertical aluminium battens, with screws (4,8x20mm) according to the drawing below. 2 screws per cross.



T-1 - Fastening on vertical aluminium battens

6" = 1'-0"



T-1 - Vertical cut

1 : 5

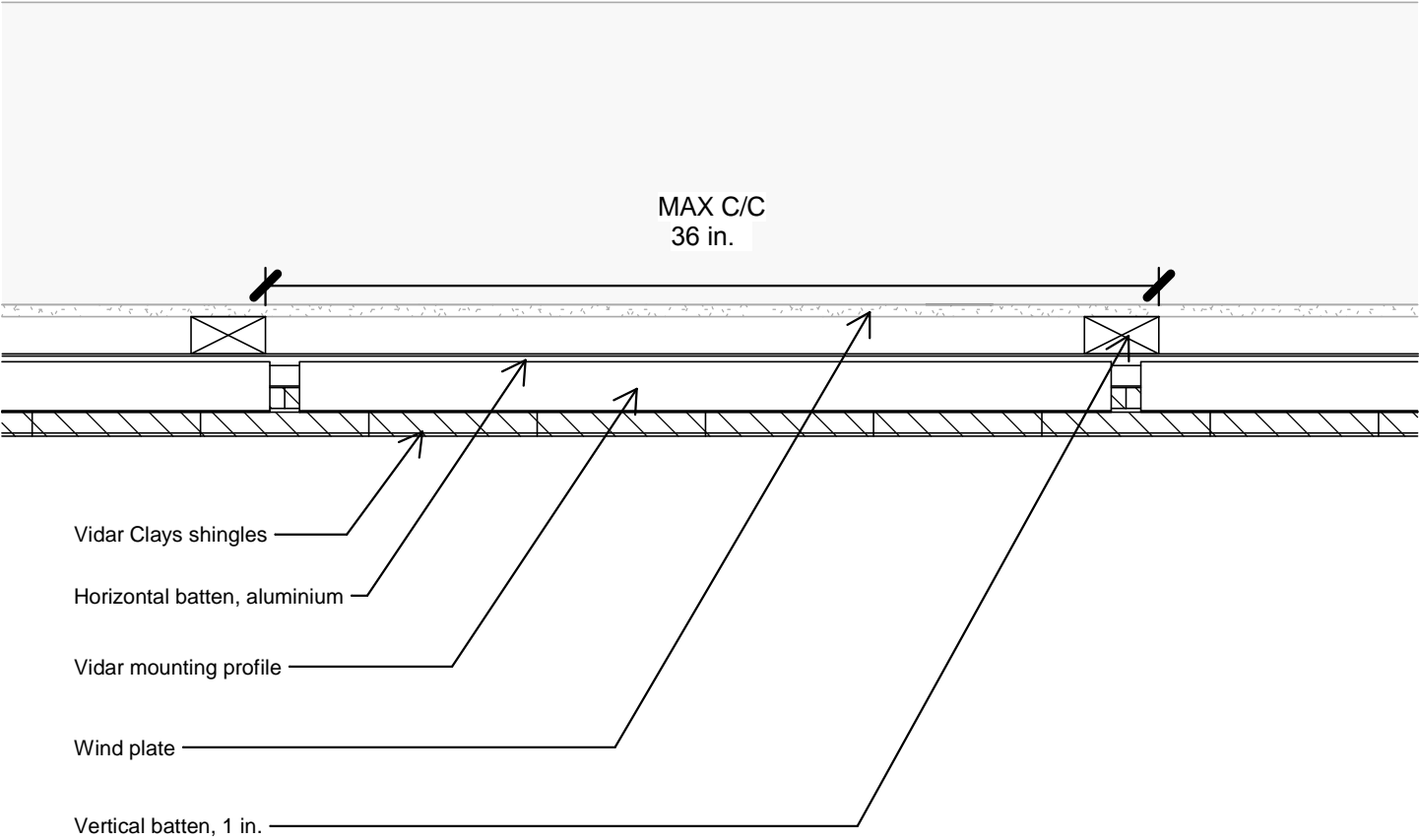
The drawing is not to scale.

Copyright © Komproment Danish Building Design

T-1	Section detail		
Date: 19-02-2020	As indicated	VIDAR Clay Shingles	Tel.: +45 96520710 E-Mail: Export@komproment.dk Web: www.komproment.com

NOTE: Komproment makes these drawings available in the versions that currently exist. All use of the drawings is undertaken at own risk and liability. The drawings are regularly updated with relevant updates/changes on our website. You are responsible for keeping up-to-date with these changes. The drawings are made available in the following formats: PDF and DWG. All drawings are for guidance only. We make no guarantee that the drawings are suitable for all purposes.





The drawing is not to scale.

Copyright © Komproment Danish Building Design

T-2

Plan view

Date: 19-02-2020

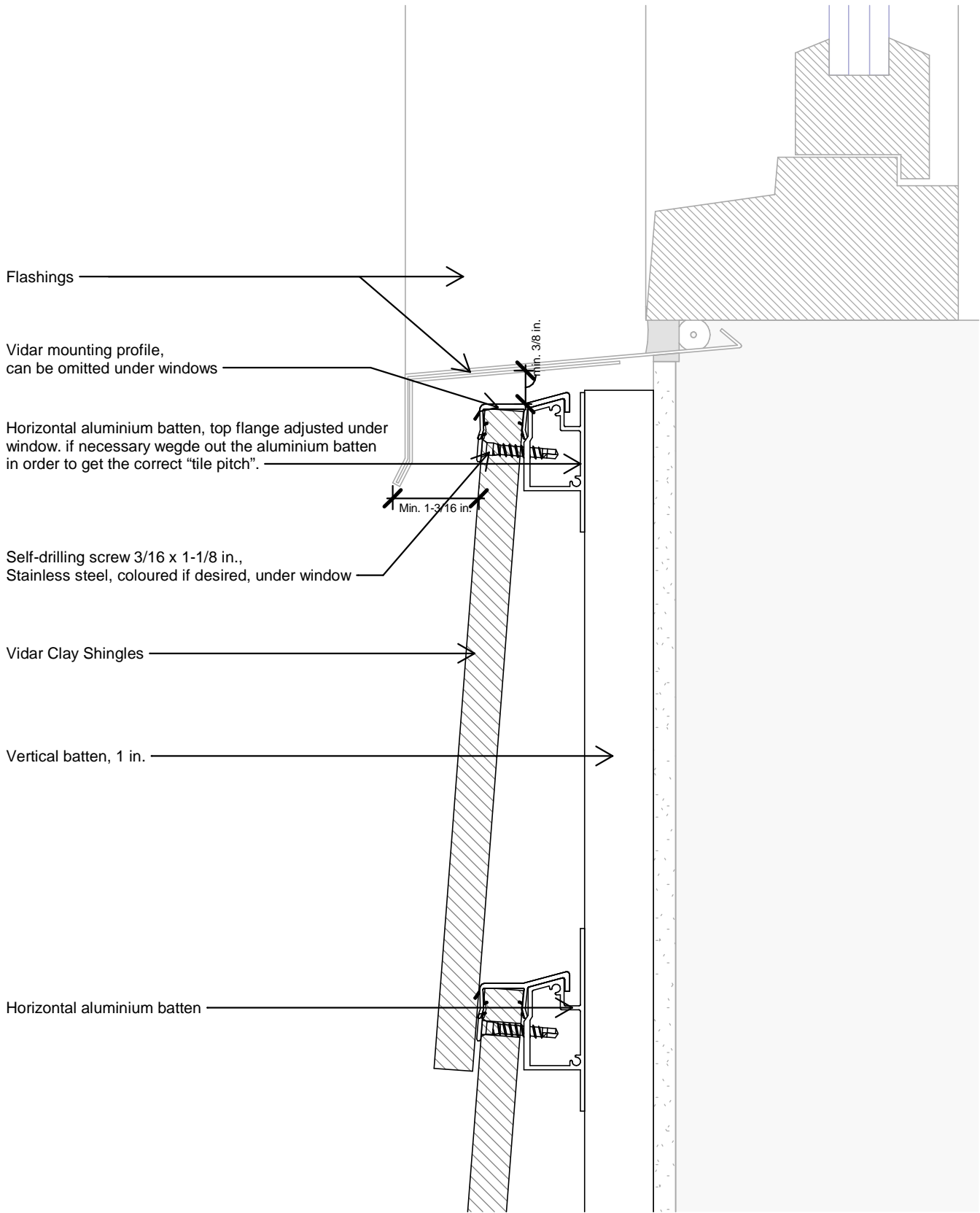
1 : 5

VIDAR Clay Shingles

Tel.: +45 96520710
E-Mail: Export@komproment.dk
Web: www.komproment.com

NOTE: Komproment makes these drawings available in the versions that currently exist. All use of the drawings is undertaken at own risk and liability. The drawings are regularly updated with relevant updates/changes on our website. You are responsible for keeping up-to-date with these changes. The drawings are made available in the following formats: PDF and DWG. All drawings are for guidance only. We make no guarantee that the drawings are suitable for all purposes.

KOMPROMENT
DANISH BUILDING DESIGN



The drawing is not to scale.

Copyright © Komproment Danish Building Design

T-3

Section detail - Under window

Date: 19-02-2020

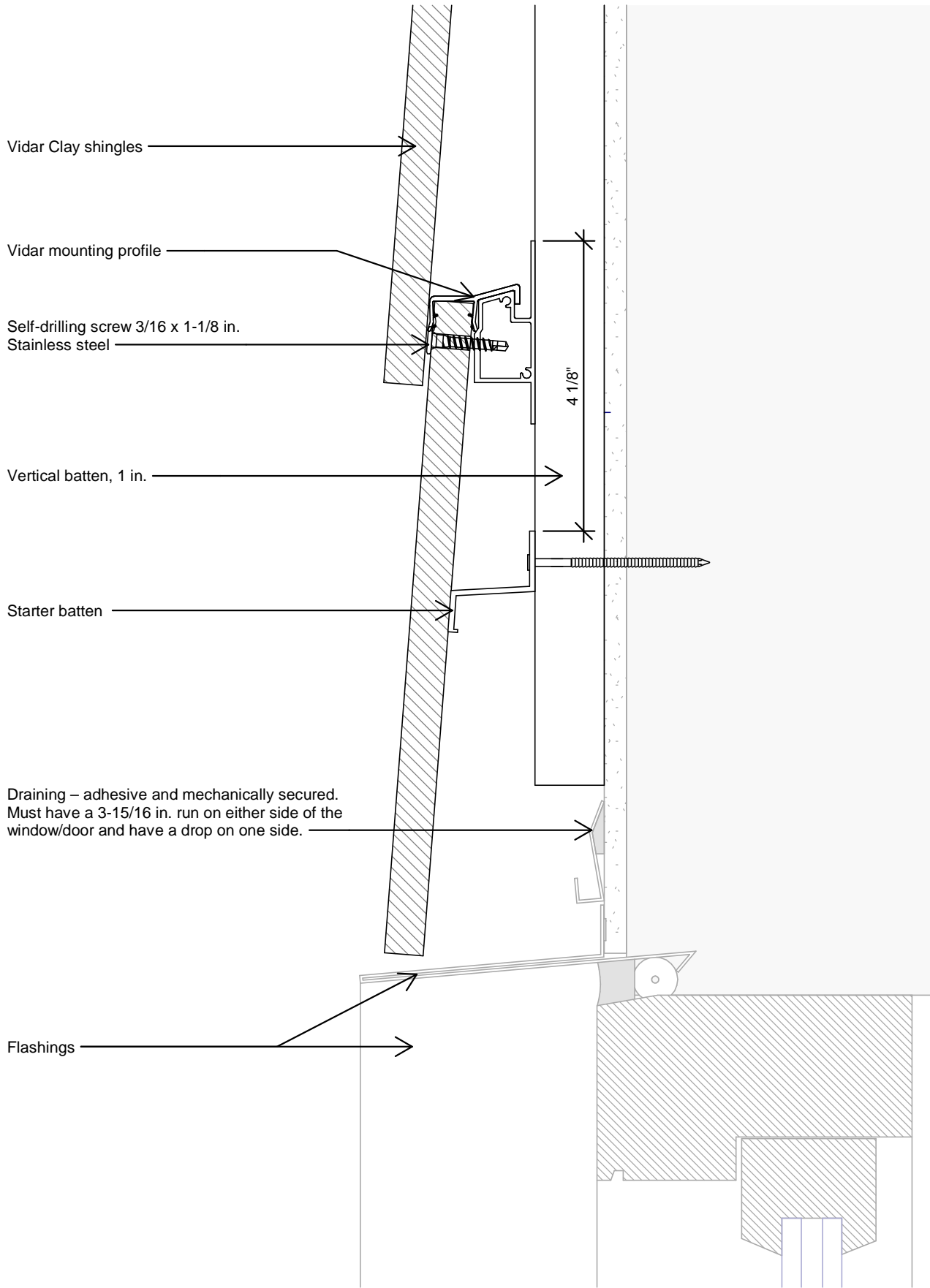
6" = 1'-0"

VIDAR Clay Shingles

Tel.: +45 96520710
E-Mail: Export@komproment.dk
Web: www.komproment.com

NOTE: Komproment makes these drawings available in the versions that currently exist. All use of the drawings is undertaken at own risk and liability. The drawings are regularly updated with relevant updates/changes on our website. You are responsible for keeping up-to-date with these changes. The drawings are made available in the following formats: PDF and DWG. All drawings are for guidance only. We make no guarantee that the drawings are suitable for all purposes.

KOMPROMENT
DANISH BUILDING DESIGN



The drawing is not to scale.

Copyright © Komproment Danish Building Design

T-4 Section detail - Top window/door

Date: 19-02-2020

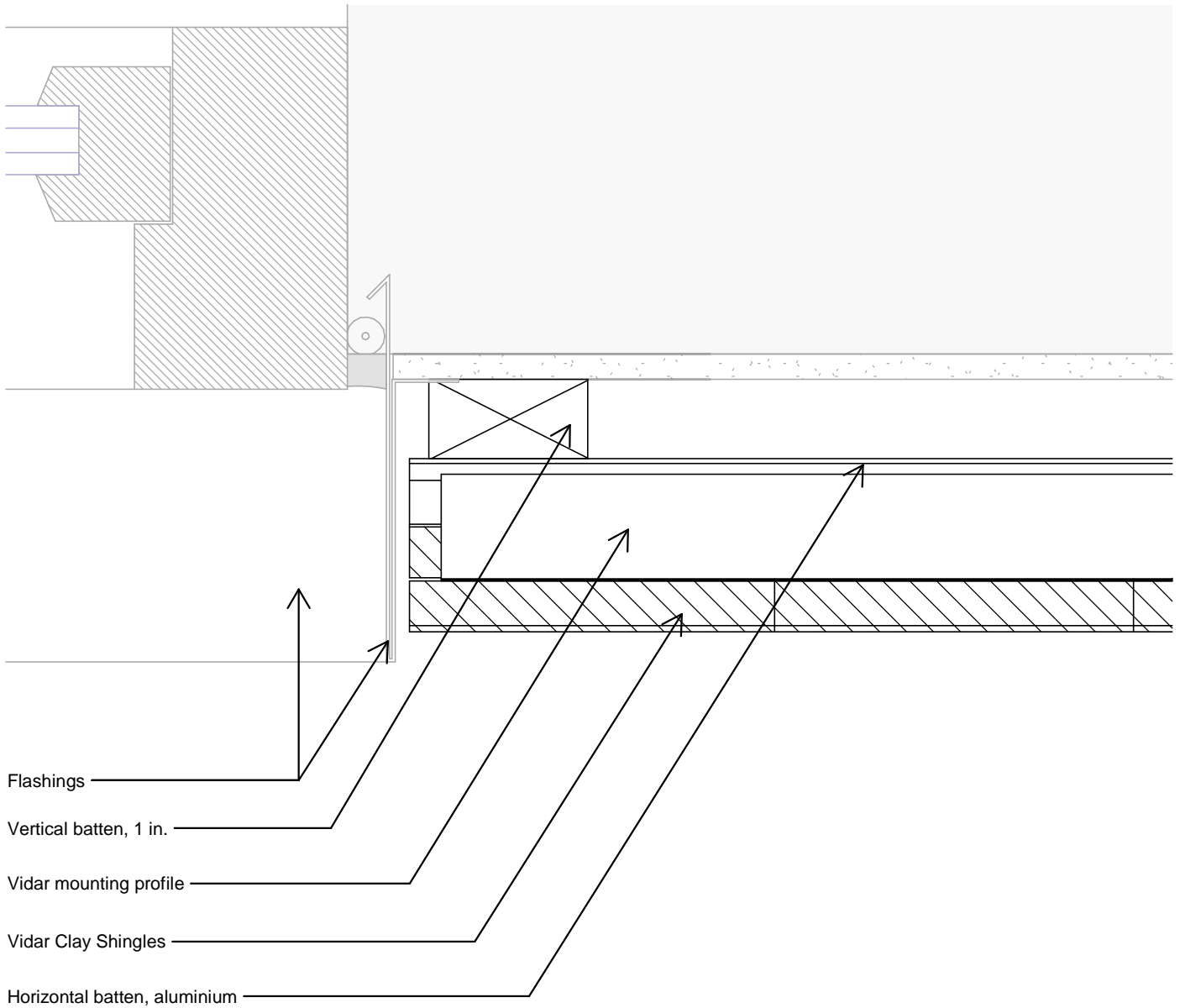
6" = 1'-0"

VIDAR Clay Shingles

Tel.: +45 96520710
E-Mail: Export@komproment.dk
Web: www.komproment.com

NOTE: Komproment makes these drawings available in the versions that currently exist. All use of the drawings is undertaken at own risk and liability. The drawings are regularly updated with relevant updates/changes on our website. You are responsible for keeping up-to-date with these changes. The drawings are made available in the following formats: PDF and DWG. All drawings are for guidance only. We make no guarantee that the drawings are suitable for all purposes.





The drawing is not to scale.

Copyright © Komproment Danish Building Design

T-5

Plan view - Window/door

Date: 19-02-2020

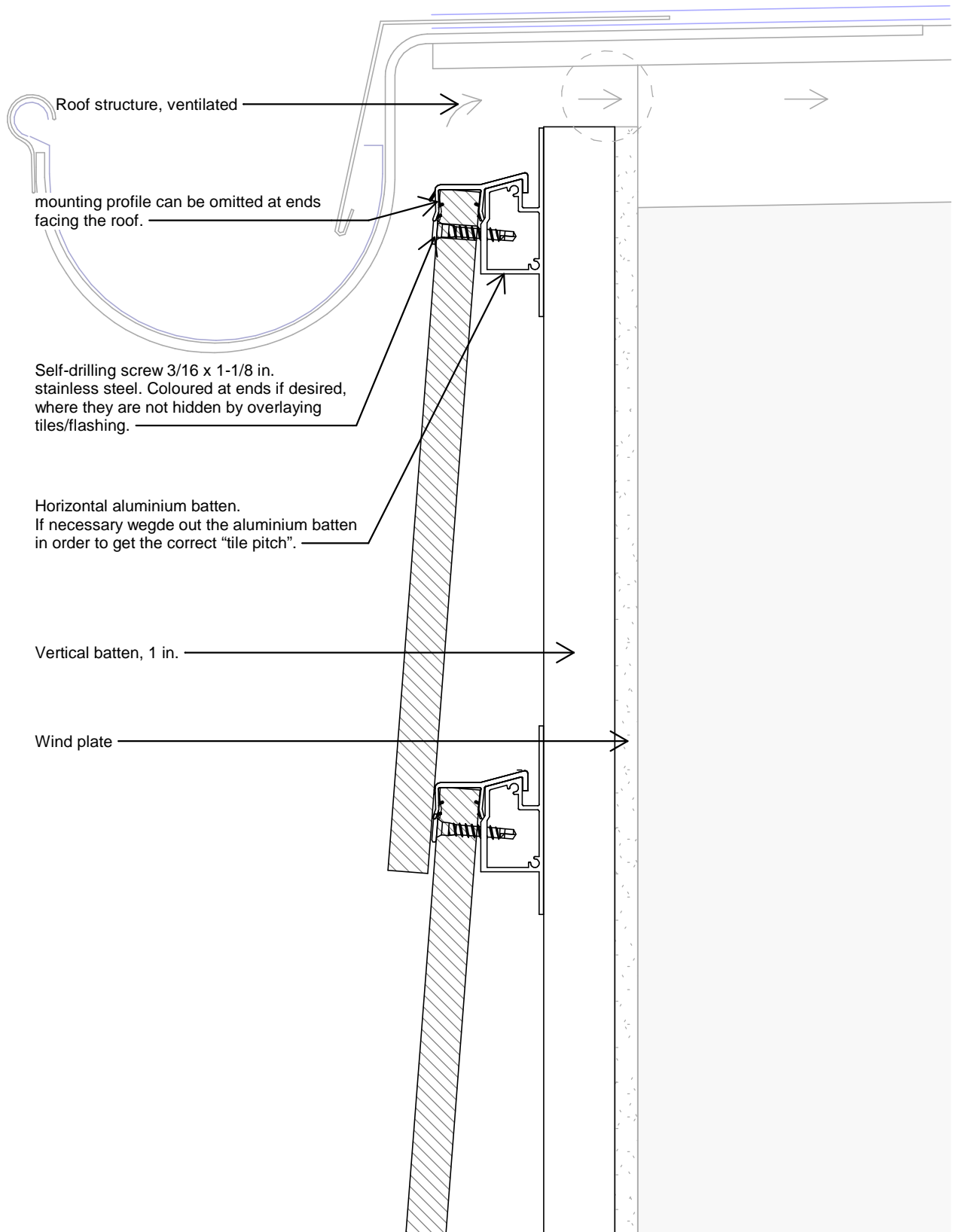
6" = 1'-0"

VIDAR Clay Shingles

Tel.: +45 96520710
E-Mail: Export@komproment.dk
Web: www.komproment.com

NOTE: Komproment makes these drawings available in the versions that currently exist. All use of the drawings is undertaken at own risk and liability. The drawings are regularly updated with relevant updates/changes on our website. You are responsible for keeping up-to-date with these changes. The drawings are made available in the following formats: PDF and DWG. All drawings are for guidance only. We make no guarantee that the drawings are suitable for all purposes.

KOMPROMENT
DANISH BUILDING DESIGN



The drawing is not to scale.

- Taghældning op til 10° ent Danish Building Design

T-6

Section detail - Eave

Date: 19-02-2020

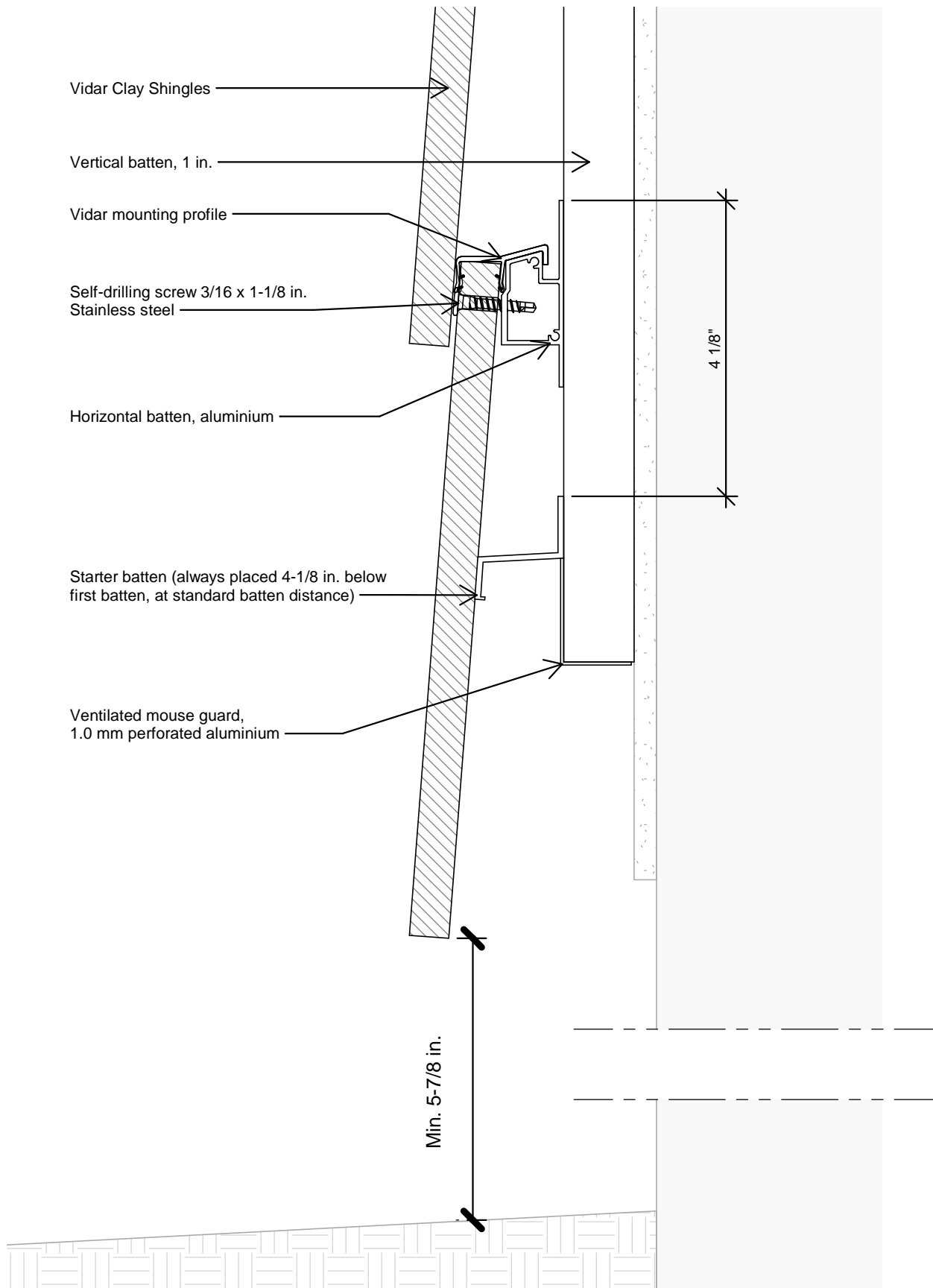
6" = 1'-0"

VIDAR Clay Shingles

Tel.: +45 96520710
E-Mail: Export@komproment.dk
Web: www.komproment.com

NOTE: Komproment makes these drawings available in the versions that currently exist. All use of the drawings is undertaken at own risk and liability. The drawings are regularly updated with relevant updates/changes on our website. You are responsible for keeping up-to-date with these changes. The drawings are made available in the following formats: PDF and DWG. All drawings are for guidance only. We make no guarantee that the drawings are suitable for all purposes.

KOMPROMENT
DANISH BUILDING DESIGN



The drawing is not to scale.

Copyright © Komproment Danish Building Design

T-7

Section detail - Start facade

Date: 19-02-2020

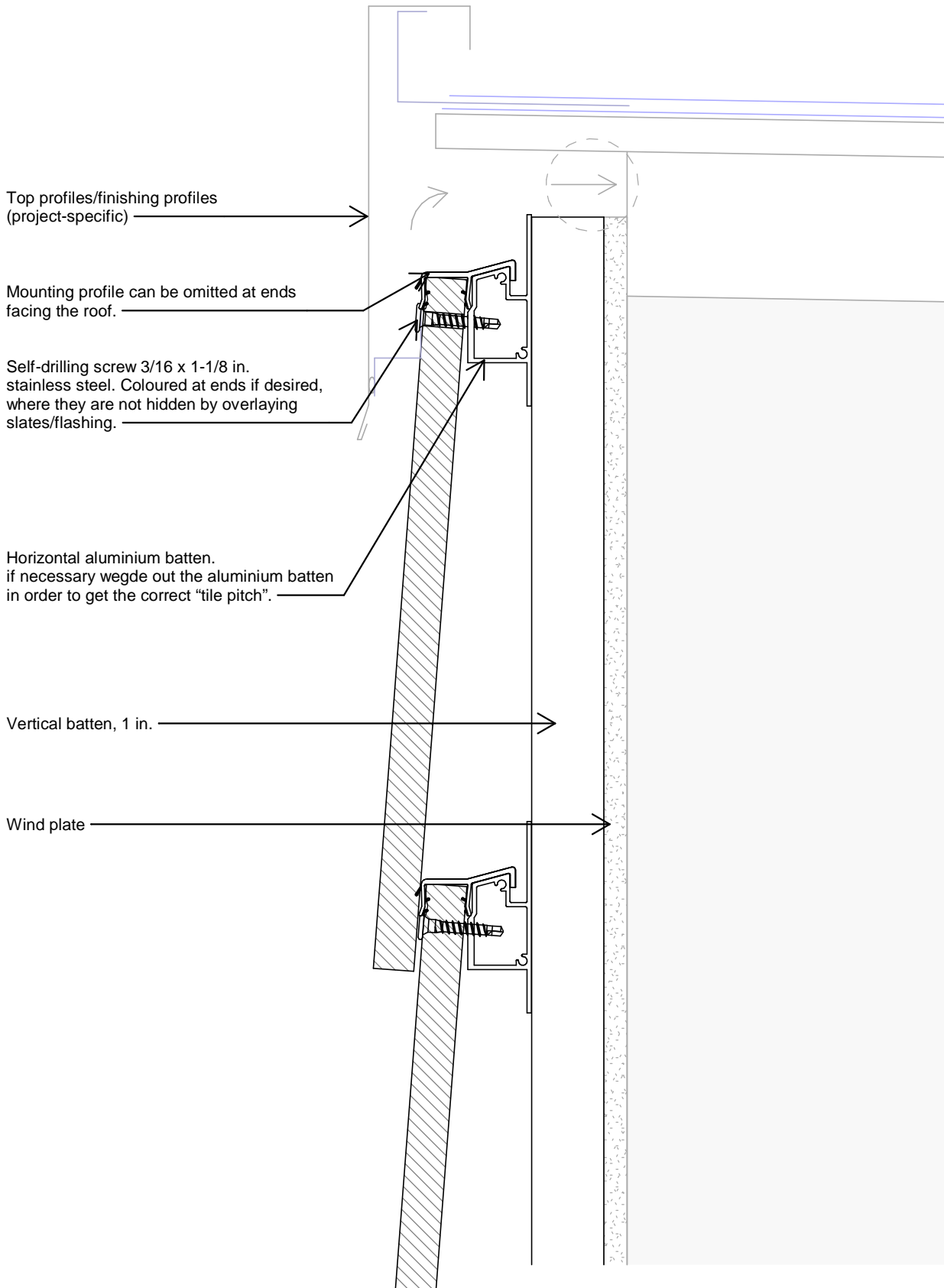
6" = 1'-0"

VIDAR Clay Shingles

Tel.: +45 96520710
E-Mail: Export@komproment.dk
Web: www.komproment.com

NOTE: Komproment makes these drawings available in the versions that currently exist. All use of the drawings is undertaken at own risk and liability. The drawings are regularly updated with relevant updates/changes on our website. You are responsible for keeping up-to-date with these changes. The drawings are made available in the following formats: PDF and DWG. All drawings are for guidance only. We make no guarantee that the drawings are suitable for all purposes.

KOMPROMENT
DANISH BUILDING DESIGN



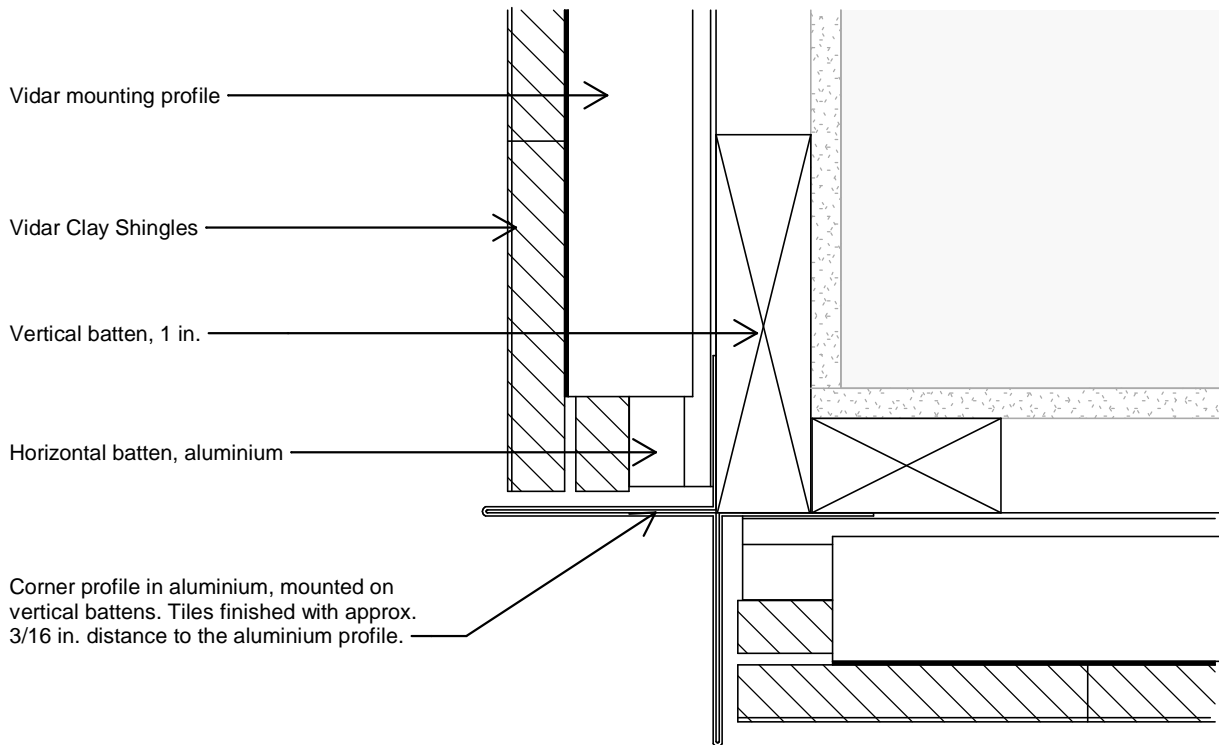
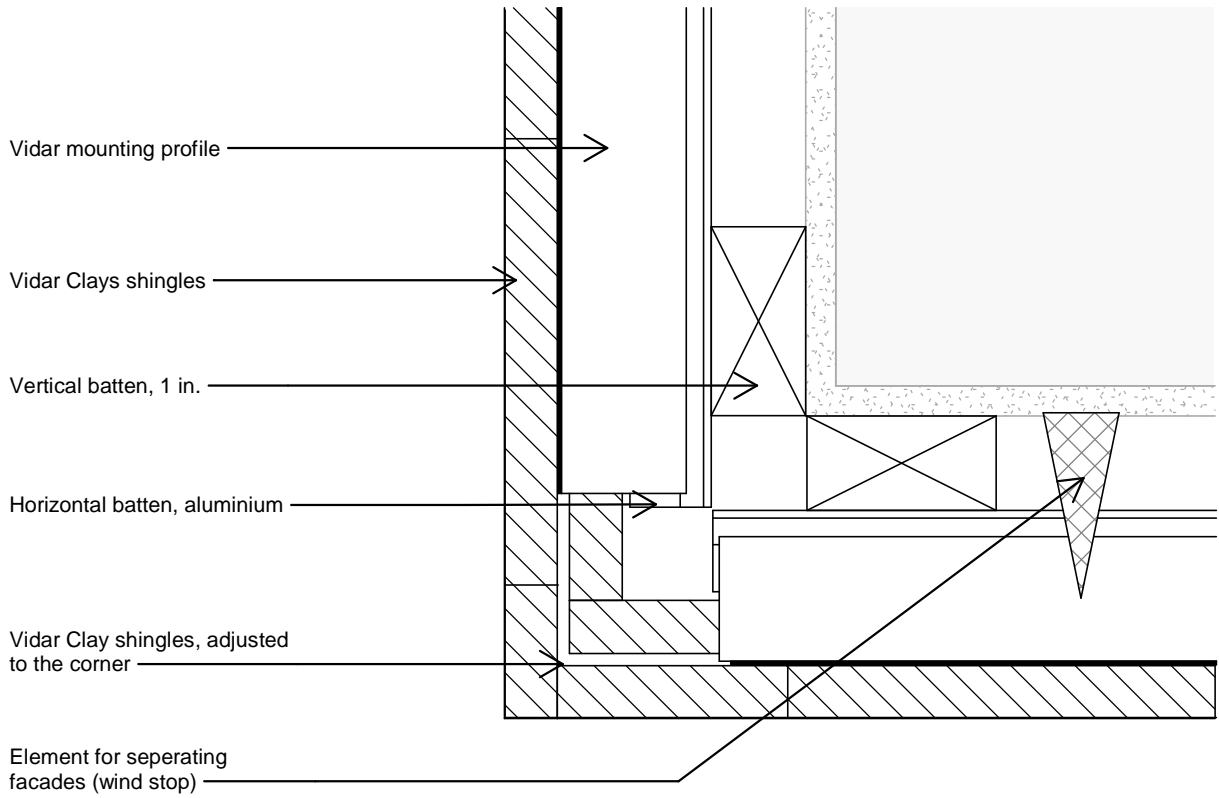
The drawing is not to scale.

Copyright © Komproment Danish Building Design

T-8	Section detail - Gable		Tel.: +45 96520710 E-Mail: Export@komproment.dk Web: www.komproment.com
Date: 19-02-2020	6" = 1'-0"	VIDAR Clay Shingles	

NOTE: Komproment makes these drawings available in the versions that currently exist. All use of the drawings is undertaken at own risk and liability. The drawings are regularly updated with relevant updates/changes on our website. You are responsible for keeping up-to-date with these changes. The drawings are made available in the following formats: PDF and DWG. All drawings are for guidance only. We make no guarantee that the drawings are suitable for all purposes.

KOMPROMENT
DANISH BUILDING DESIGN



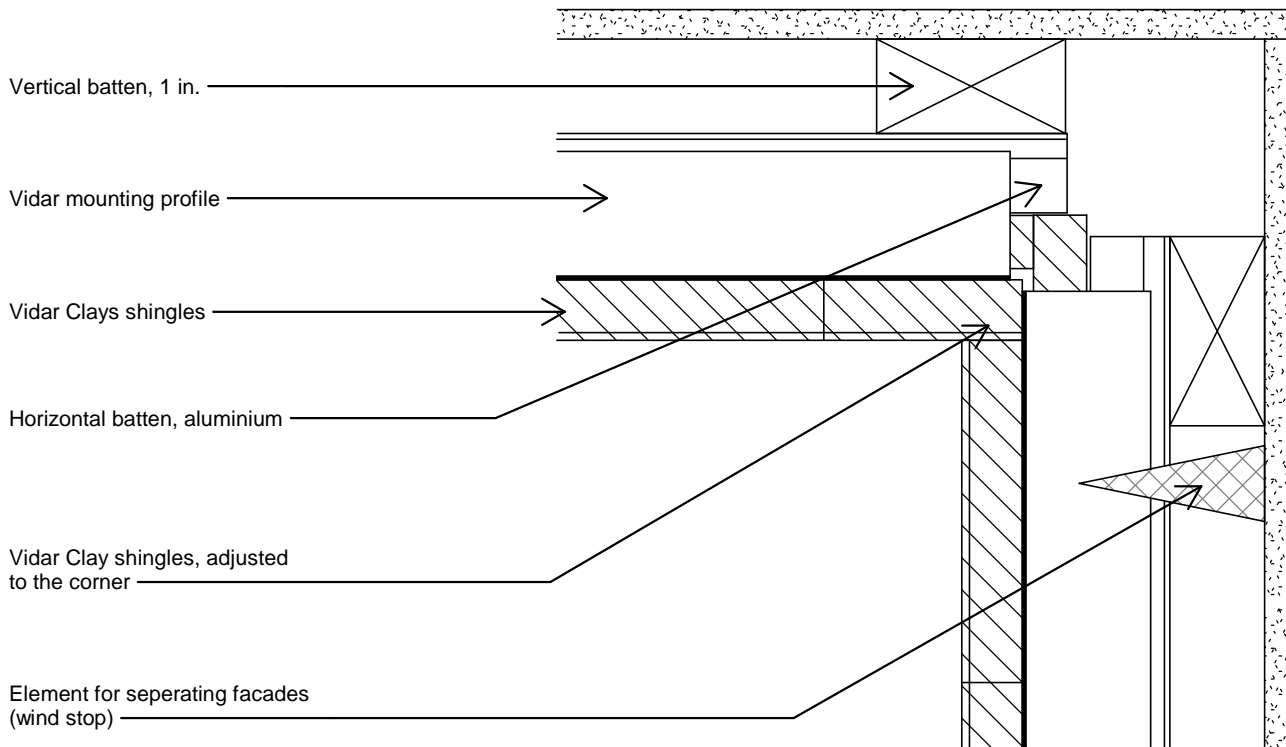
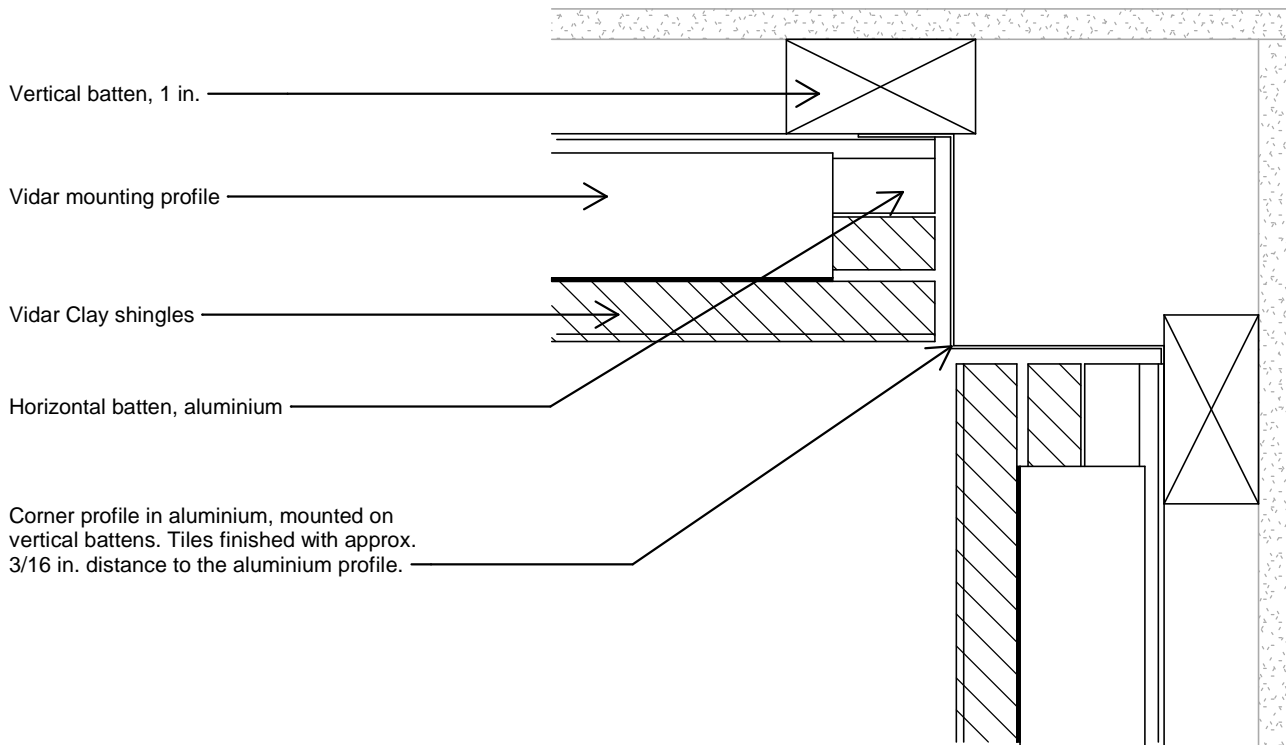
The drawing is not to scale.

Copyright © Komproment Danish Building Design

T-9	Plan view - Outside corner		
Date: 19-02-2020	6" = 1'-0"	VIDAR Clay Shingles	Tel.: +45 96520710 E-Mail: Export@komproment.dk Web: www.komproment.com

NOTE: Komproment makes these drawings available in the versions that currently exist. All use of the drawings is undertaken at own risk and liability. The drawings are regularly updated with relevant updates/changes on our website. You are responsible for keeping up-to-date with these changes. The drawings are made available in the following formats: PDF and DWG. All drawings are for guidance only. We make no guarantee that the drawings are suitable for all purposes.





The drawing is not to scale.

Copyright © Komproment Danish Building Design

T-10	Plan view - Inside corner		
Date: 19-02-2020	6" = 1'-0"	VIDAR Clay Shingles	Tel.: +45 96520710 E-Mail: Export@komproment.dk Web: www.komproment.com

NOTE: Komproment makes these drawings available in the versions that currently exist. All use of the drawings is undertaken at own risk and liability. The drawings are regularly updated with relevant updates/changes on our website. You are responsible for keeping up-to-date with these changes. The drawings are made available in the following formats: PDF and DWG. All drawings are for guidance only. We make no guarantee that the drawings are suitable for all purposes.

KOMPROMENT
DANISH BUILDING DESIGN

General information

VIDAR Clay Shingles is a natural slate facade system for covering existing as well as new buildings.

The facade system can be mounted directly onto the existing facade, on wooden frames or using aluminium battens. The VIDAR Clay Shingles facade system is Cradle to Cradle certified at silver level.

The drawings and instructions are prepared for facades mounted in Denmark, Norway and Sweden, on the basis of installation on a wooden substructure.

Attachment between the substructure and the load-bearing building sections is not part of these instructions and must fulfil applicable standards and regulations at all times, as well as being documented in the specific projects.

Warnings

Follow all instructions and warnings in the latest version of the Installation Guide and this detail folder (available online at www.komproment.com) in order to prevent accidents or injury.

Death or serious injury may result if you do not observe the following safety precautions:

- Mount all shingles onto the horizontal batten using the screws provided by KOMPROMENT. Failure to use the screws as instructed may result in shingles falling from the façade.
- Ensure that all screws have been properly tightened when mounting the shingles onto the horizontal batten. Failure to properly tighten the screws may result in shingles falling from the façade.

Flatness tolerances for the back wall

Always check the substructure before mounting battens. Straightness requirement for the underlying structure, vertical and horizontal, tolerance: +/- 1/8 in., measured with straightedge over 78-3/4 in.

Flashings

All flashings around windows, doors, gables, eaves etc. in Komproment's drawings and instructions are examples only. All flashings must be reviewed, designed and planned out for the individual project.

Flashing is therefore not kept in stock by Komproment – delivery time 2-3 weeks.

Technical support

If you need advice and/or technical support, you can always count on our assistance when you need it.

Komproment can help with:

- Getting started on installation at the start of larger projects
- Discussions about detail solutions
- Input for the descriptive material
- Other problems/issues

For technical support, contact us by calling: +45 96520710 or by email to export@komproment.dk
Opening times: Monday-Thursday: 8:00-16:00, Friday: 8:00-15:30

General

Komproment cannot be held responsible for project design or for project details, which are the responsibility of the architect and/or consulting engineer supervising the project at all times.

Komproment's drawings and instructions must be considered as guidelines for the purpose of sharing Komproment's experience. Komproment is therefore solely responsible for the delivered building materials and the quality of these.

NOTE: This Detail folder will be updated regularly and the latest version is available on our website at www.komproment.com. You are responsible to review the most up to date version prior to commencing installation. Drawings are available on our website in the following formats: PDF and DWG. All drawings are for reference purposes only. The installer is responsible for ensuring compliance with all local and federal laws, rules, and regulations.
KOMPROMENT is not responsible or liable for any misprints in this Installation Guide or its website.

The drawing is not to scale.

Copyright © Komproment Danish Building Design

T-11	General information		
Date: 19-02-2020		VIDAR Clay Shingles	Tel.: +45 96520710 E-Mail: Export@komproment.dk Web: www.komproment.com

NOTE: Komproment makes these drawings available in the versions that currently exist. All use of the drawings is undertaken at own risk and liability. The drawings are regularly updated with relevant updates/changes on our website. You are responsible for keeping up-to-date with these changes. The drawings are made available in the following formats: PDF and DWG. All drawings are for guidance only. We make no guarantee that the drawings are suitable for all purposes.

KOMPROMENT
DANISH BUILDING DESIGN