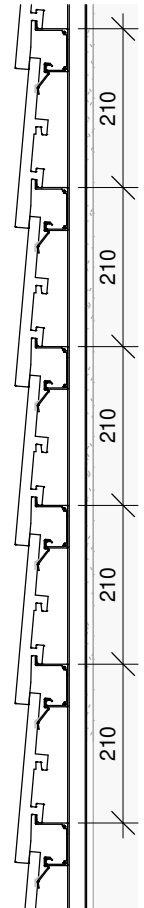


Front View  
1 : 10



Vertical view  
1 : 10

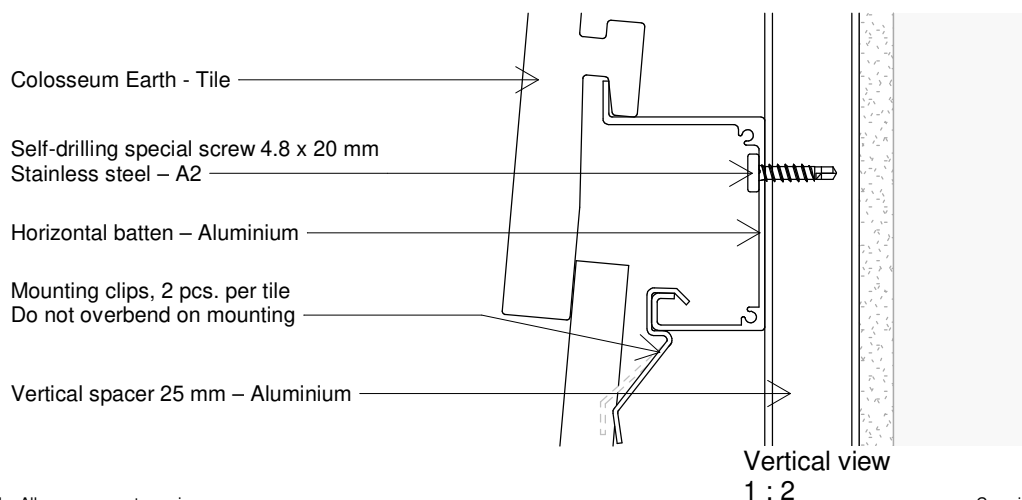
Colosseum Earth tiles is a rough ceramic product and has the small distinctive features that characterise this natural product. There will be variation in the surface and size of each tile.

The following points must be observed to achieve optimal results:

- Colosseum Earth tiles **MUST** be mixed from multiple pallets to achieve the desired color variation (Min 4-6 pallets).
- Colosseum Earth is a ceramic product and breakage on corners and edges will appear as a natural part of the tiles.
- Recommended bond: Wild bond.
- Recommended minimum tile width for adjustments = 100 mm
- Max batten distance: 210 mm (Standard)
- Minimum batten distance: 190 mm

**Gluing of tiles:**

In situations where the use of Komproment façade adhesive is required, it is important to always glue tile to tile.



Vertical view  
1 : 2

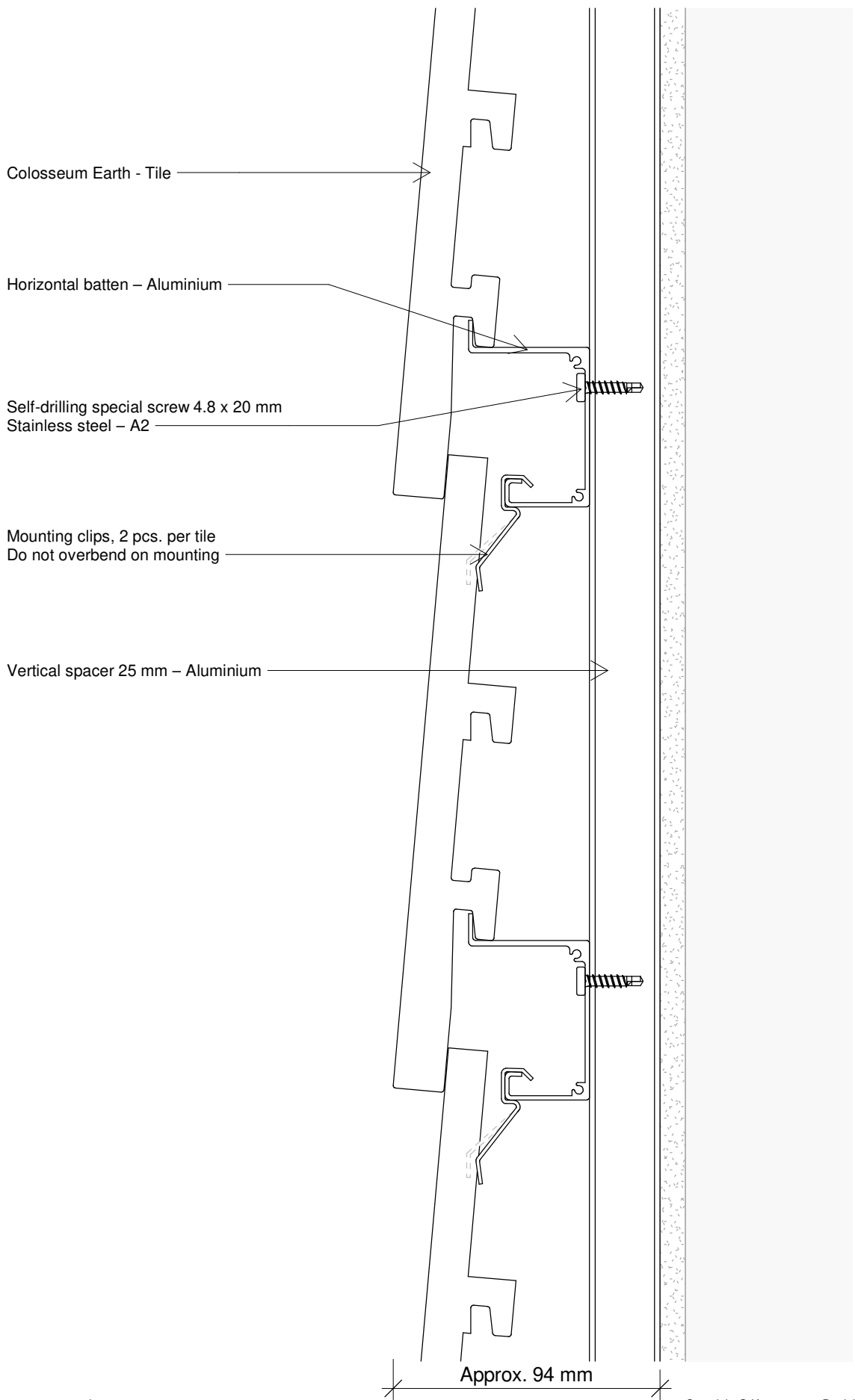
The drawing is not to scale. All measurements are in mm.

Copyright © Komproment Danish Building Design

CE - 00	Colosseum Earth	
Date: 06-07-2020	As indicated	<b>Colosseum Earth</b> Tel.: +45 96520710 E-Mail: Teknik@komproment.dk Web: www.komproment.com

NOTE: Komproment makes these drawings available in the versions that exist. All use of the drawings is done at own risk and liability. The drawings are regularly updated with relevant updates/changes on our website. You are responsible for keeping up-to-date with these changes. The drawings are made available in the following formats: PDF and DWG. All drawings are for guidance. No guarantee is given that the drawings will fit all purposes.

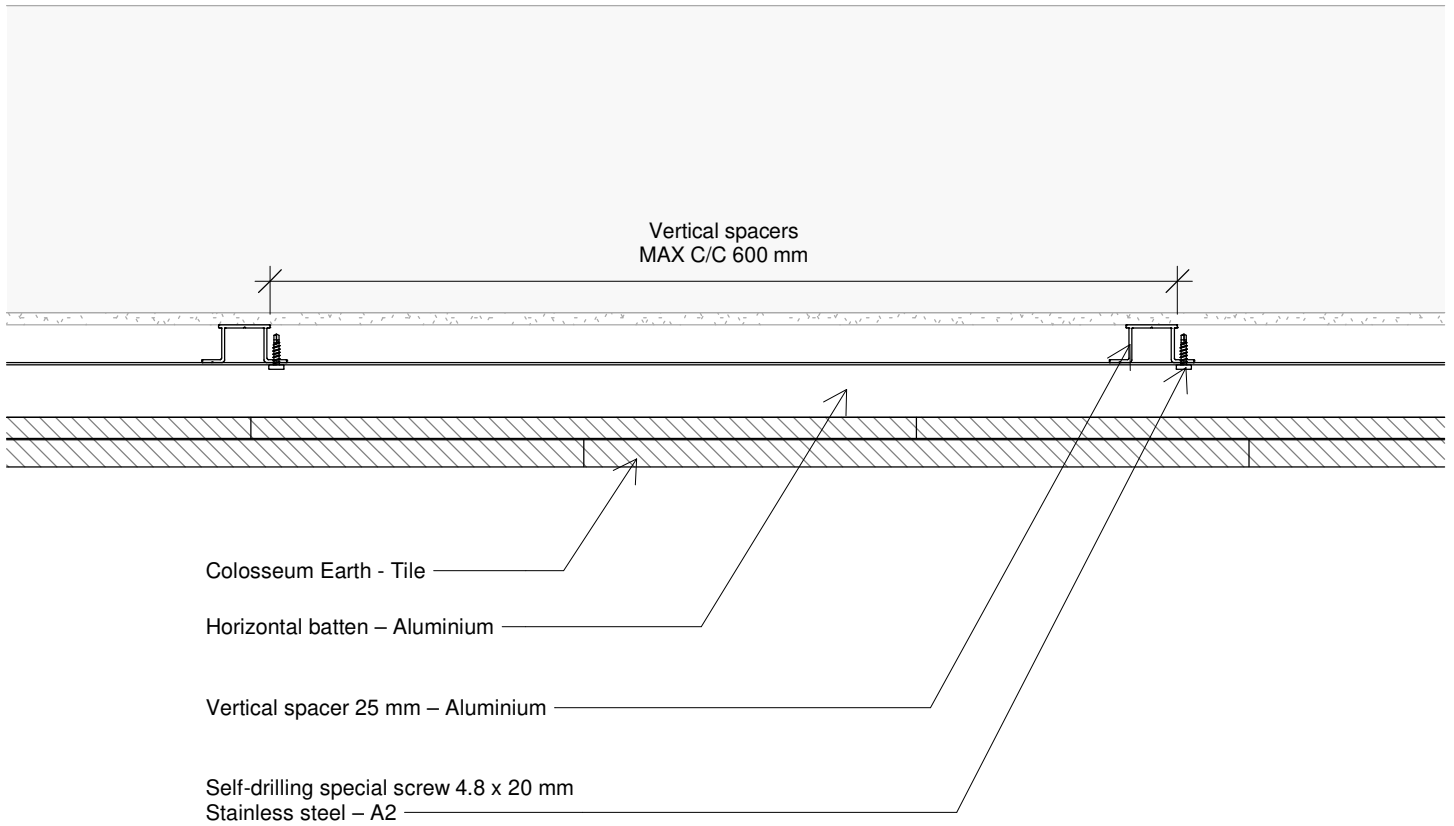




The drawing is not to scale. All measurements are in mm.

Copyright © Komproment Danish Building Design

CE - 01	Vertical view		
Date: 06-07-2020	1 : 2	<b>Colosseum Earth</b>	Tel.: +45 96520710 E-Mail: Teknik@komproment.dk Web: www.komproment.com
<p>NOTE: Komproment makes these drawings available in the versions that exist. All use of the drawings is done at own risk and liability. The drawings are regularly updated with relevant updates/changes on our website. You are responsible for keeping up-to-date with these changes. The drawings are made available in the following formats: PDF and DWG. All drawings are for guidance. No guarantee is given that the drawings will fit all purposes.</p>			



The drawing is not to scale. All measurements are in mm.

Copyright © Komproment Danish Building Design

CE - 02

Horizontal view

Date: 06-07-2020

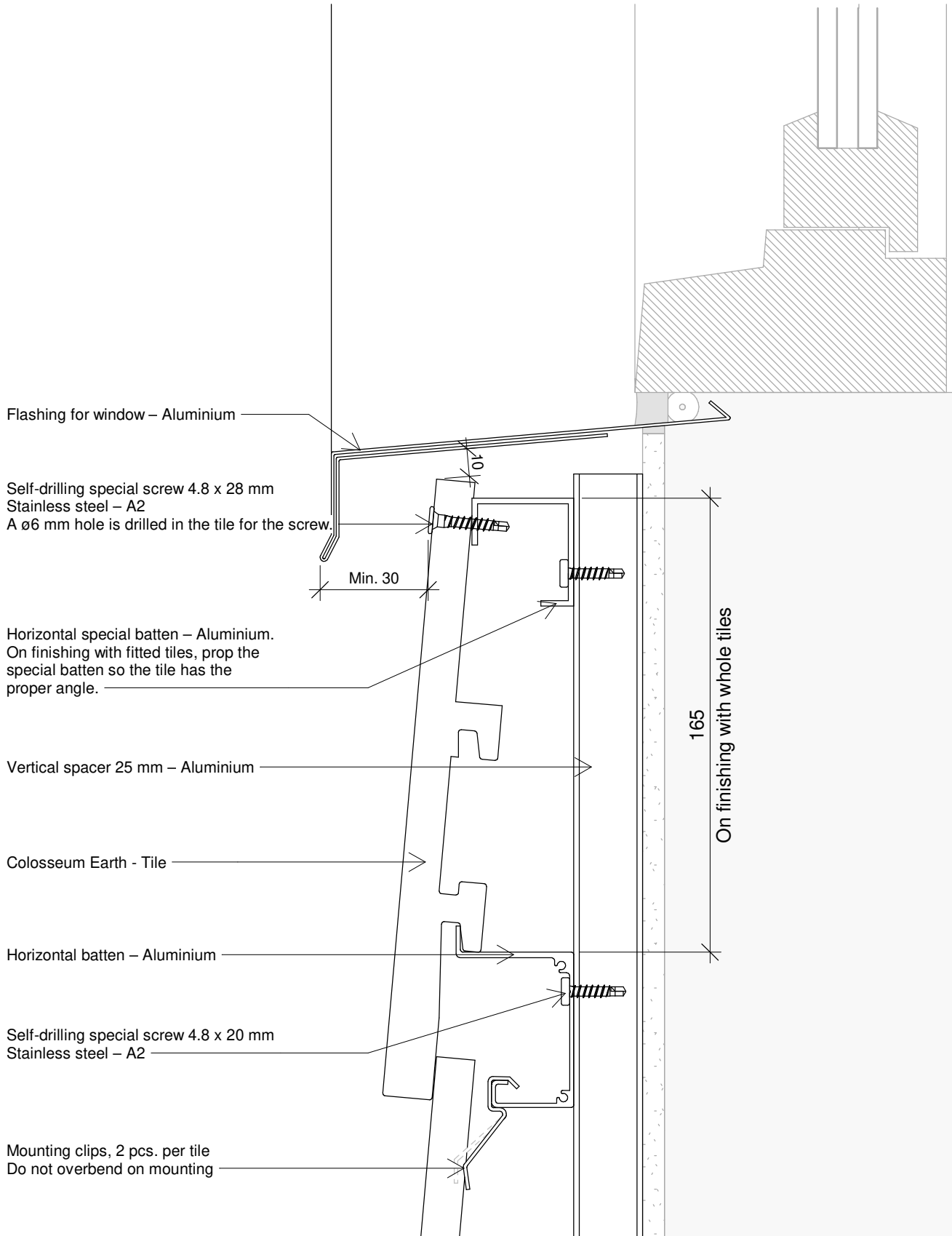
1 : 5

Colosseum Earth

Tel.: +45 96520710  
E-Mail: Teknik@komproment.dk  
Web: www.komproment.com

NOTE: Komproment makes these drawings available in the versions that exist. All use of the drawings is done at own risk and liability. The drawings are regularly updated with relevant updates/changes on our website. You are responsible for keeping up-to-date with these changes. The drawings are made available in the following formats: PDF and DWG. All drawings are for guidance. No guarantee is given that the drawings will fit all purposes.

**KOMPROMENT**  
DANISH BUILDING DESIGN



The drawing is not to scale. All measurements are in mm.

Copyright © Komproment Danish Building Design

CE - 03

Under window

Date: 06-07-2020

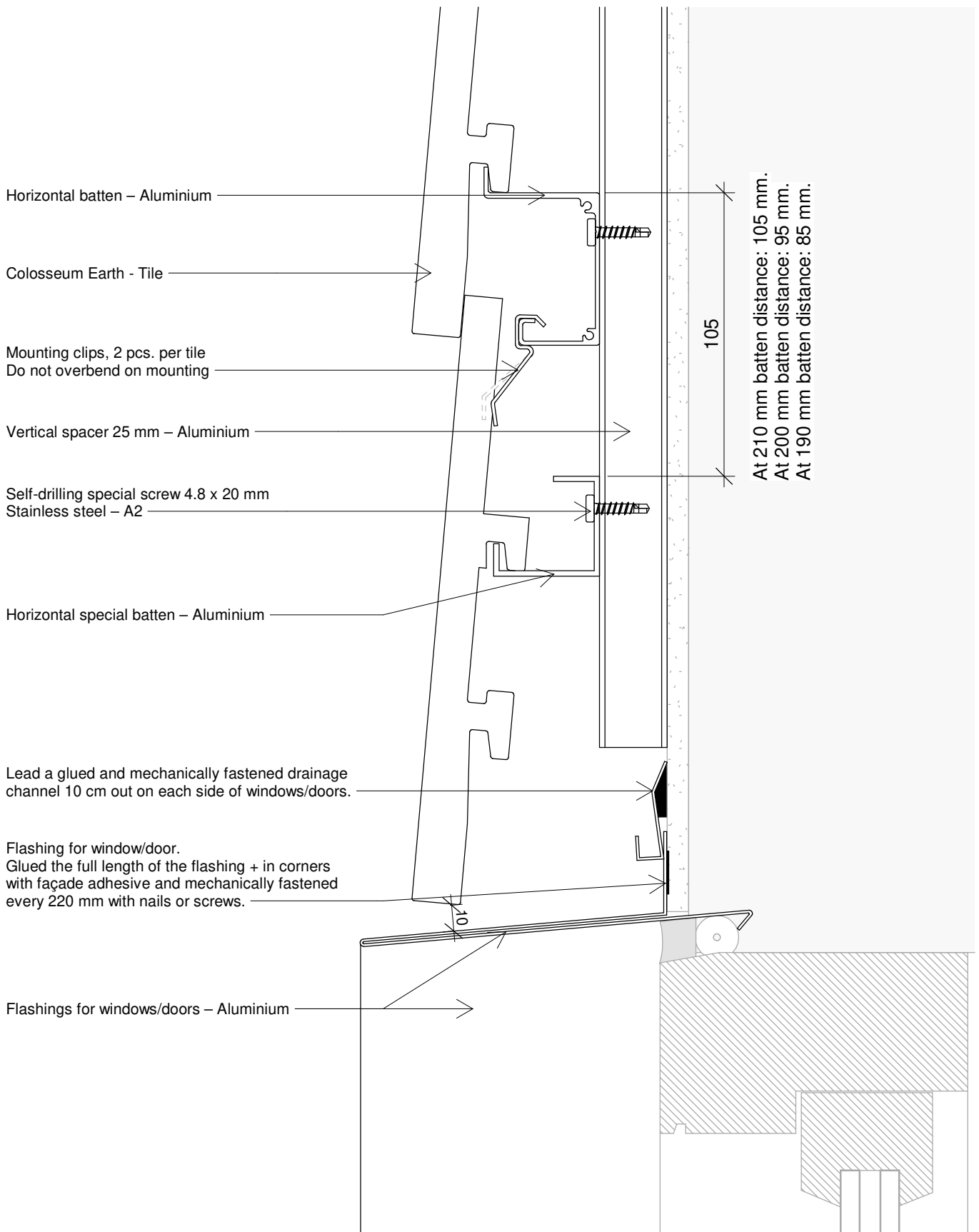
1 : 2

Colosseum Earth

Tel.: +45 96520710  
E-Mail: Teknik@komproment.dk  
Web: www.komproment.com

NOTE: Komproment makes these drawings available in the versions that exist. All use of the drawings is done at own risk and liability. The drawings are regularly updated with relevant updates/changes on our website. You are responsible for keeping up-to-date with these changes. The drawings are made available in the following formats: PDF and DWG. All drawings are for guidance. No guarantee is given that the drawings will fit all purposes.

**KOMPROMENT**  
DANISH BUILDING DESIGN



The drawing is not to scale. All measurements are in mm.

Copyright © Komproment Danish Building Design

CE - 04

Top window/door

Date: 06-07-2020

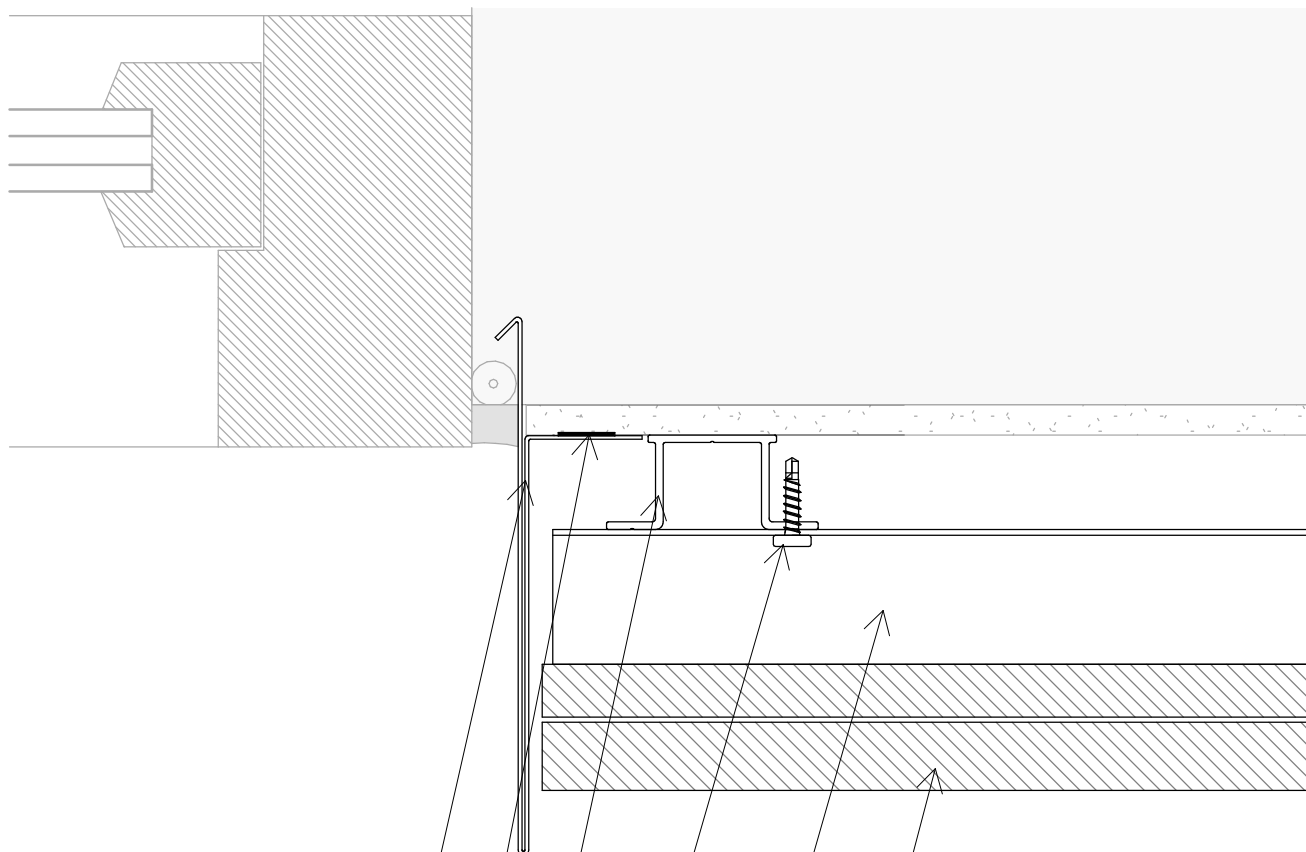
1 : 2

Colosseum Earth

Tel.: +45 96520710  
E-Mail: Teknik@komproment.dk  
Web: www.komproment.com

NOTE: Komproment makes these drawings available in the versions that exist. All use of the drawings is done at own risk and liability. The drawings are regularly updated with relevant updates/changes on our website. You are responsible for keeping up-to-date with these changes. The drawings are made available in the following formats: PDF and DWG. All drawings are for guidance. No guarantee is given that the drawings will fit all purposes.

**KOMPROMENT**  
DANISH BUILDING DESIGN



Flashings for windows/doors – Aluminium

Flashing for window/door.  
 Glued the full length of the flashing + in corners  
 with façade adhesive and mechanically  
 fastened every 220 mm with nails or screws.

Vertical spacer 25 mm – Aluminium

Self-drilling special screw 4.8 x 20 mm  
 Stainless steel – A2

Horizontal batten – Aluminium

Colosseum Earth - Tile

The drawing is not to scale. All measurements are in mm.

Copyright © Komproment Danish Building Design

CE - 05

Window/door – horizontal view

Date: 06-07-2020

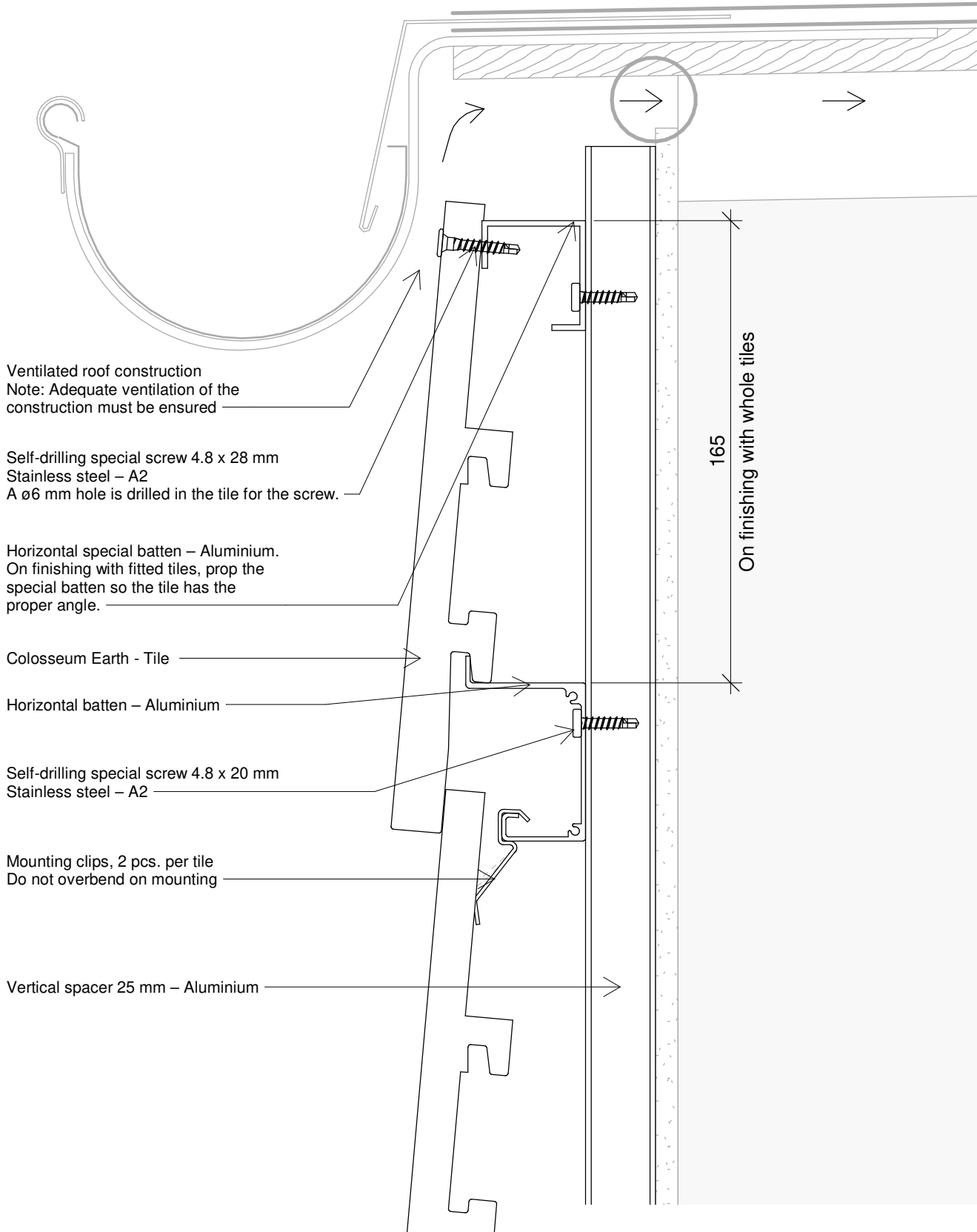
1 : 2

Colosseum Earth

Tel.: +45 96520710  
 E-Mail: Teknik@komproment.dk  
 Web: www.komproment.com

NOTE: Komproment makes these drawings available in the versions that exist. All use of the drawings is done at own risk and liability. The drawings are regularly updated with relevant updates/changes on our website. You are responsible for keeping up-to-date with these changes. The drawings are made available in the following formats: PDF and DWG. All drawings are for guidance. No guarantee is given that the drawings will fit all purposes.

**KOMPROMENT**  
 DANISH BUILDING DESIGN



Ventilated roof construction  
 Note: Adequate ventilation of the construction must be ensured

Self-drilling special screw 4.8 x 28 mm  
 Stainless steel – A2  
 A  $\phi 6$  mm hole is drilled in the tile for the screw.

Horizontal special batten – Aluminium.  
 On finishing with fitted tiles, prop the special batten so the tile has the proper angle.

Colosseum Earth - Tile

Horizontal batten – Aluminium

Self-drilling special screw 4.8 x 20 mm  
 Stainless steel – A2

Mounting clips, 2 pcs. per tile  
 Do not overbend on mounting

Vertical spacer 25 mm – Aluminium

165  
 On finishing with whole tiles

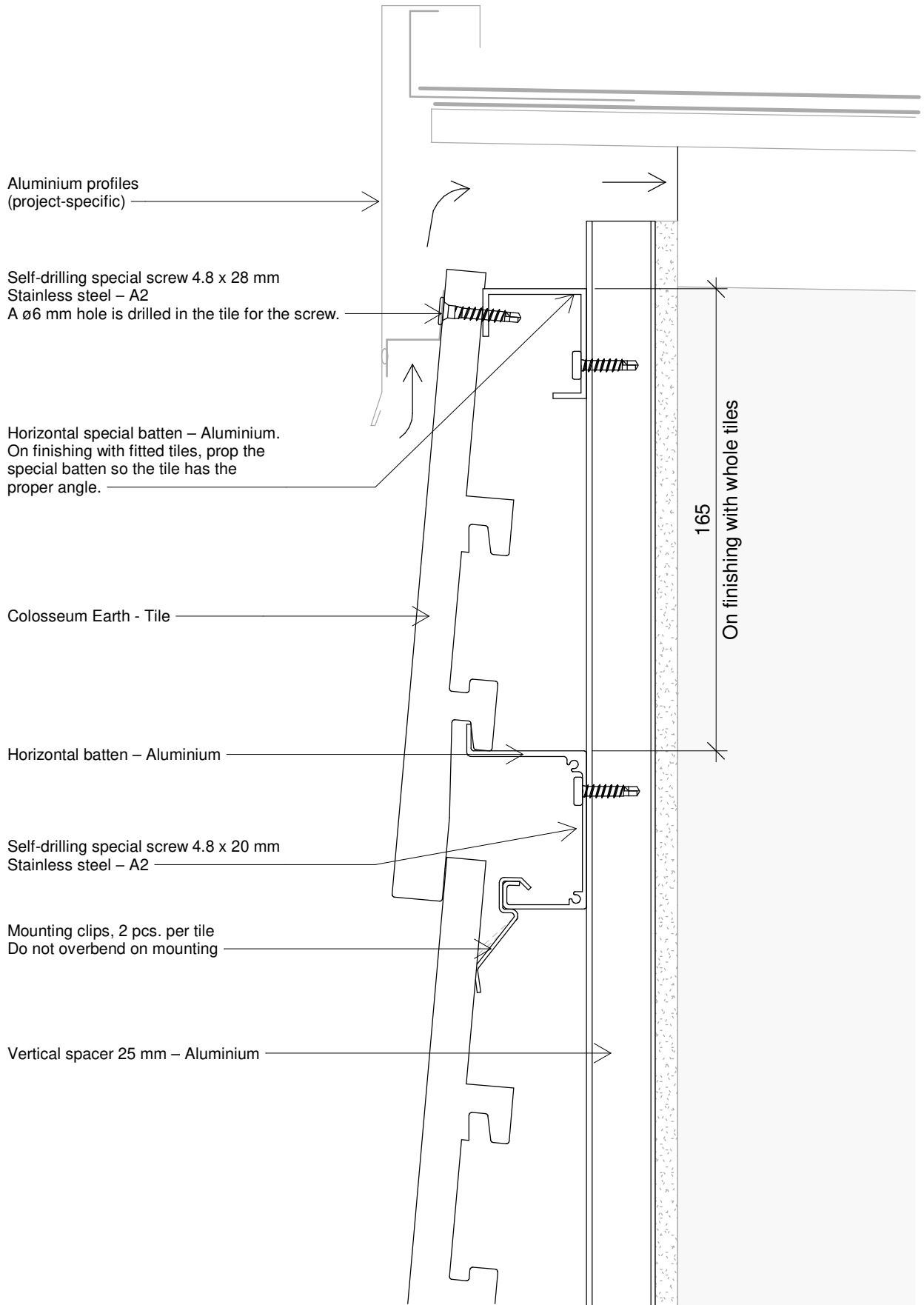
The drawing is not to scale. All measurements are in mm.

Copyright © Komproment Danish Building Design

CE - 06	Base of roof/finishing at top		
Date: 06-07-2020	1 : 2	Colosseum Earth	Tel.: +45 96520710 E-Mail: Teknik@komproment.dk Web: www.komproment.com

NOTE: Komproment makes these drawings available in the versions that exist. All use of the drawings is done at own risk and liability. The drawings are regularly updated with relevant updates/changes on our website. You are responsible for keeping up-to-date with these changes. The drawings are made available in the following formats: PDF and DWG. All drawings are for guidance. No guarantee is given that the drawings will fit all purposes.





The drawing is not to scale. All measurements are in mm.

Copyright © Komproment Danish Building Design

CE - 07

Gable

Date: 06-07-2020

1 : 2

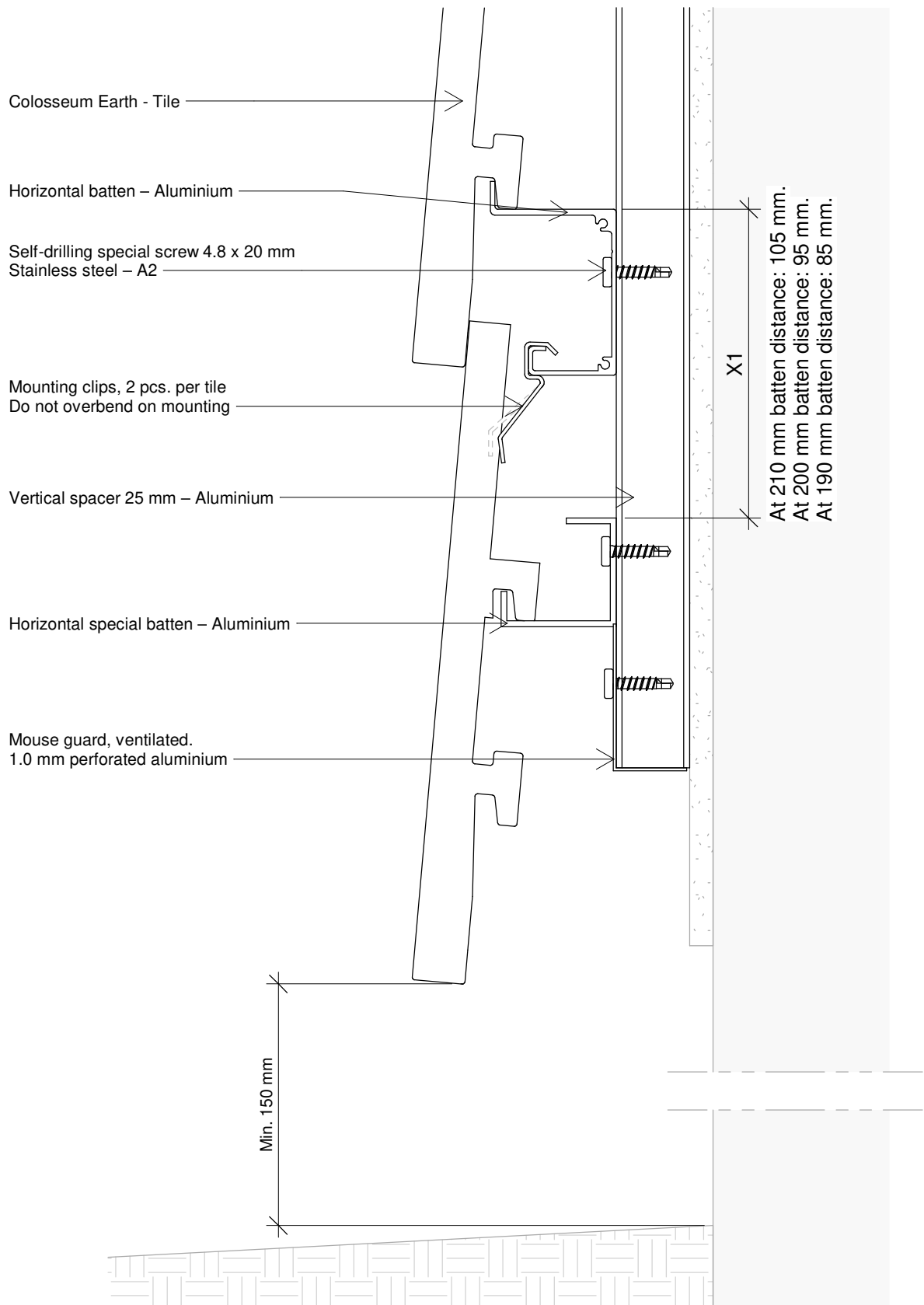
Colosseum Earth

Tel.: +45 96520710  
E-Mail: Teknik@komproment.dk  
Web: www.komproment.com

NOTE: Komproment makes these drawings available in the versions that exist. All use of the drawings is done at own risk and liability. The drawings are regularly updated with relevant updates/changes on our website. You are responsible for keeping up-to-date with these changes. The drawings are made available in the following formats: PDF and DWG. All drawings are for guidance. No guarantee is given that the drawings will fit all purposes.

**KOMPROMENT**  
DANISH BUILDING DESIGN





The drawing is not to scale. All measurements are in mm.

Copyright © Komproment Danish Building Design

CE - 08

Start façade

Date: 06-07-2020

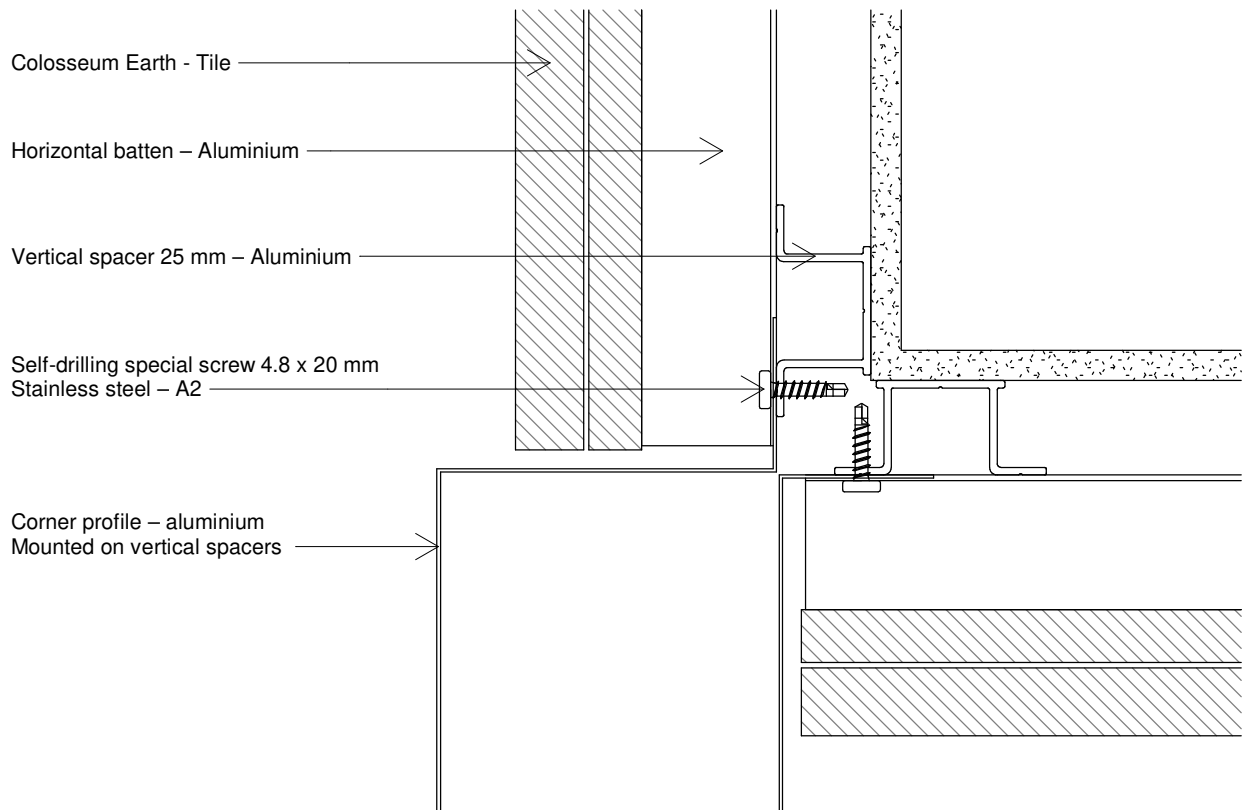
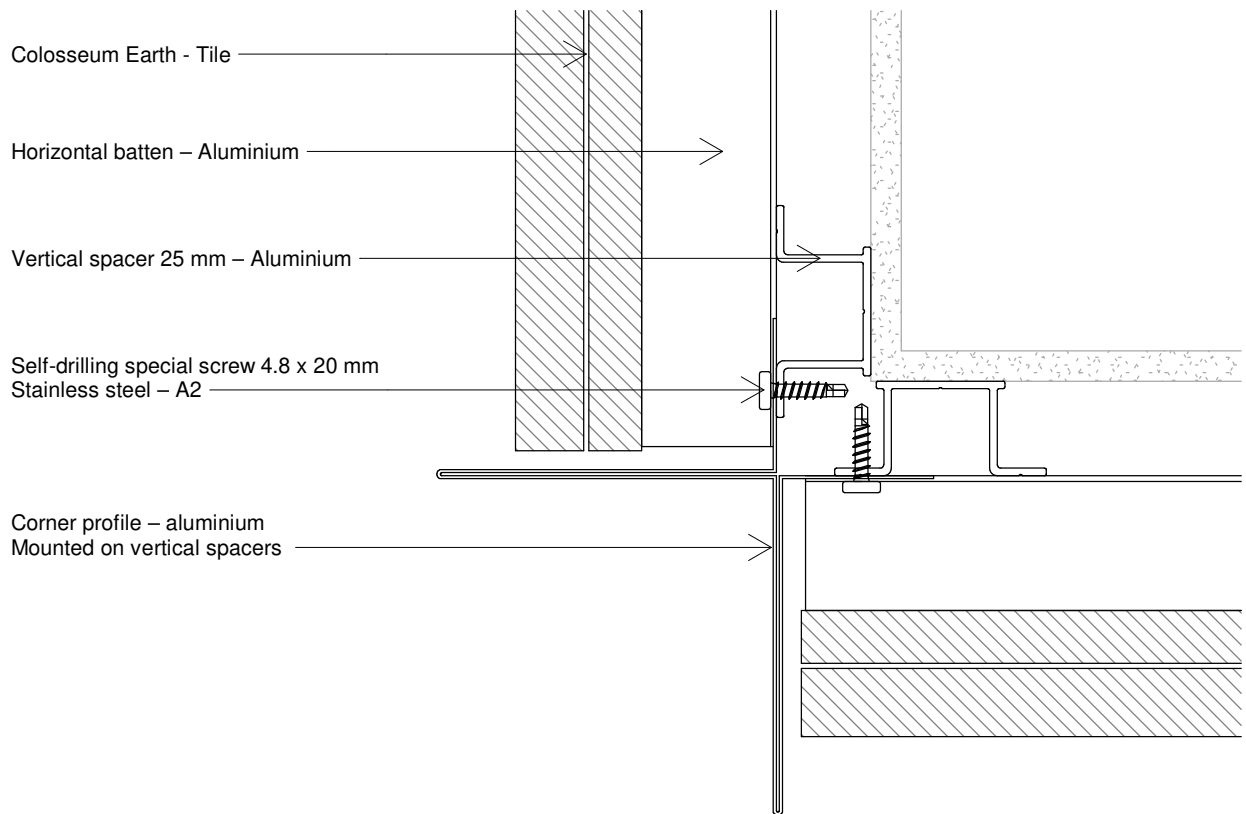
1 : 2

Colosseum Earth

Tel.: +45 96520710  
E-Mail: Teknik@komproment.dk  
Web: www.komproment.com

NOTE: Komproment makes these drawings available in the versions that exist. All use of the drawings is done at own risk and liability. The drawings are regularly updated with relevant updates/changes on our website. You are responsible for keeping up-to-date with these changes. The drawings are made available in the following formats: PDF and DWG. All drawings are for guidance. No guarantee is given that the drawings will fit all purposes.

**KOMPROMENT**  
DANISH BUILDING DESIGN



The drawing is not to scale. All measurements are in mm.

Copyright © Komproment Danish Building Design

CE - 09

Outside corner

Date: 06-07-2020

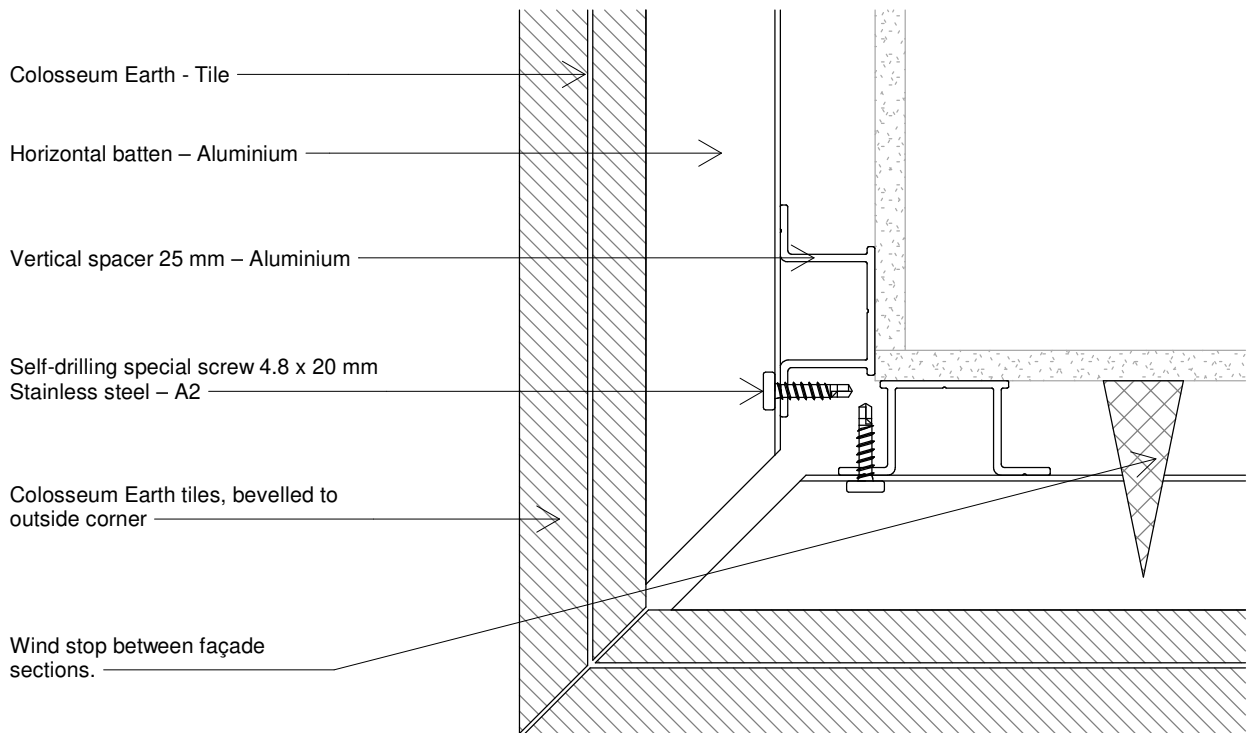
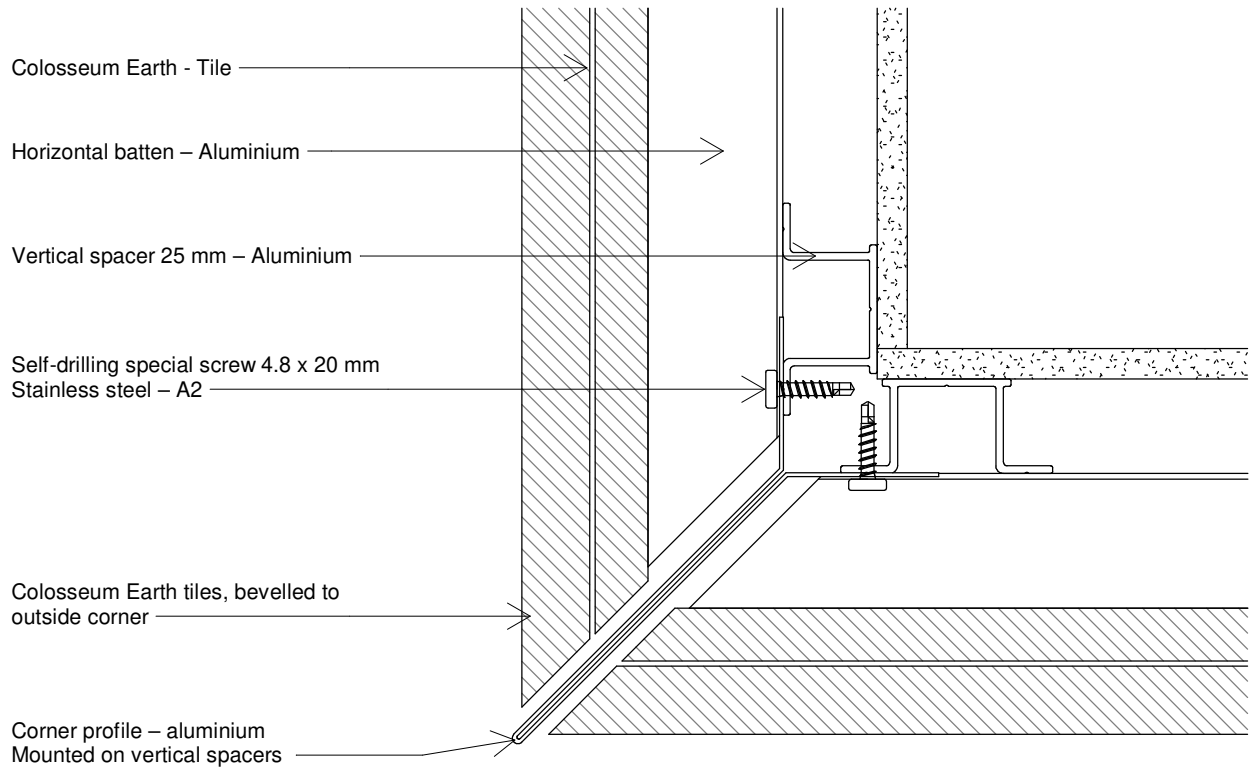
1 : 2

Colosseum Earth

Tel.: +45 96520710  
E-Mail: Teknik@komproment.dk  
Web: www.komproment.com

NOTE: Komproment makes these drawings available in the versions that exist. All use of the drawings is done at own risk and liability. The drawings are regularly updated with relevant updates/changes on our website. You are responsible for keeping up-to-date with these changes. The drawings are made available in the following formats: PDF and DWG. All drawings are for guidance. No guarantee is given that the drawings will fit all purposes.

**KOMPROMENT**  
DANISH BUILDING DESIGN



The drawing is not to scale. All measurements are in mm.

Copyright © Komproment Danish Building Design

CE - 10

Outside corner 2

Date: 06-07-2020

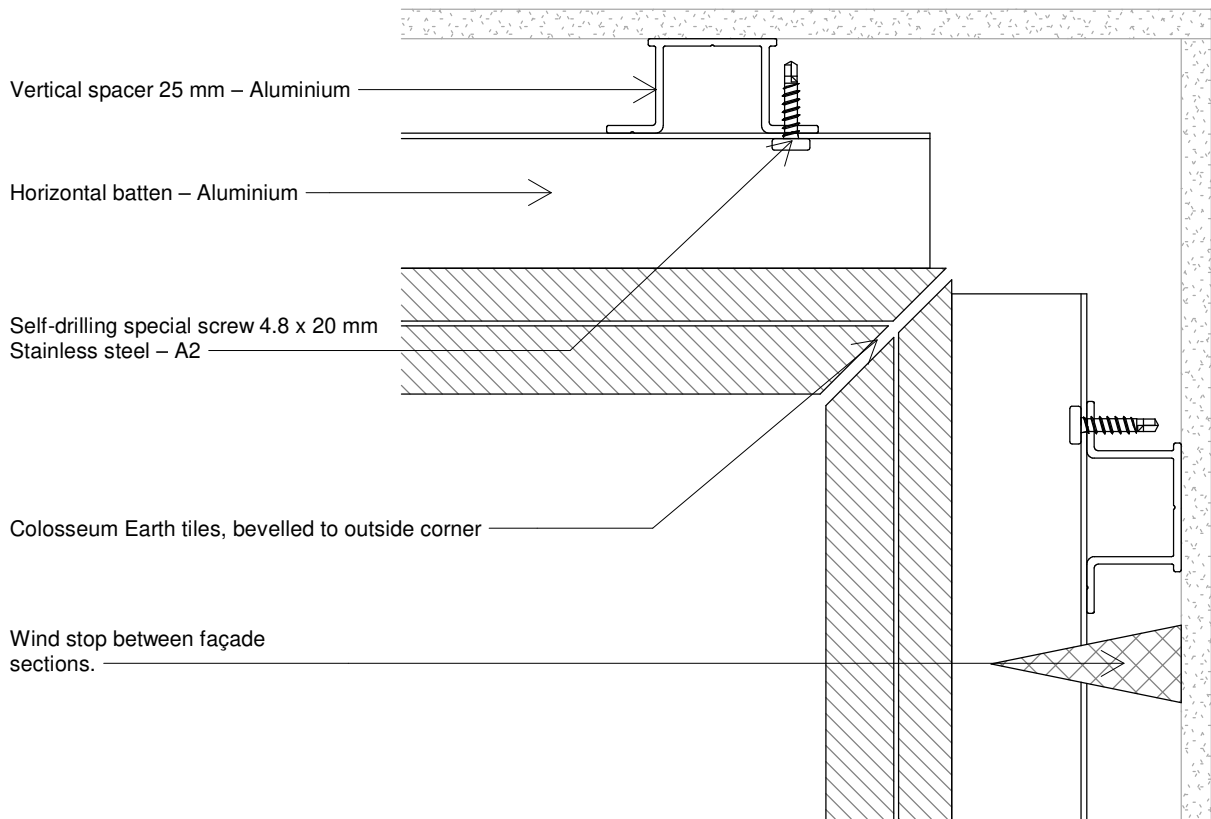
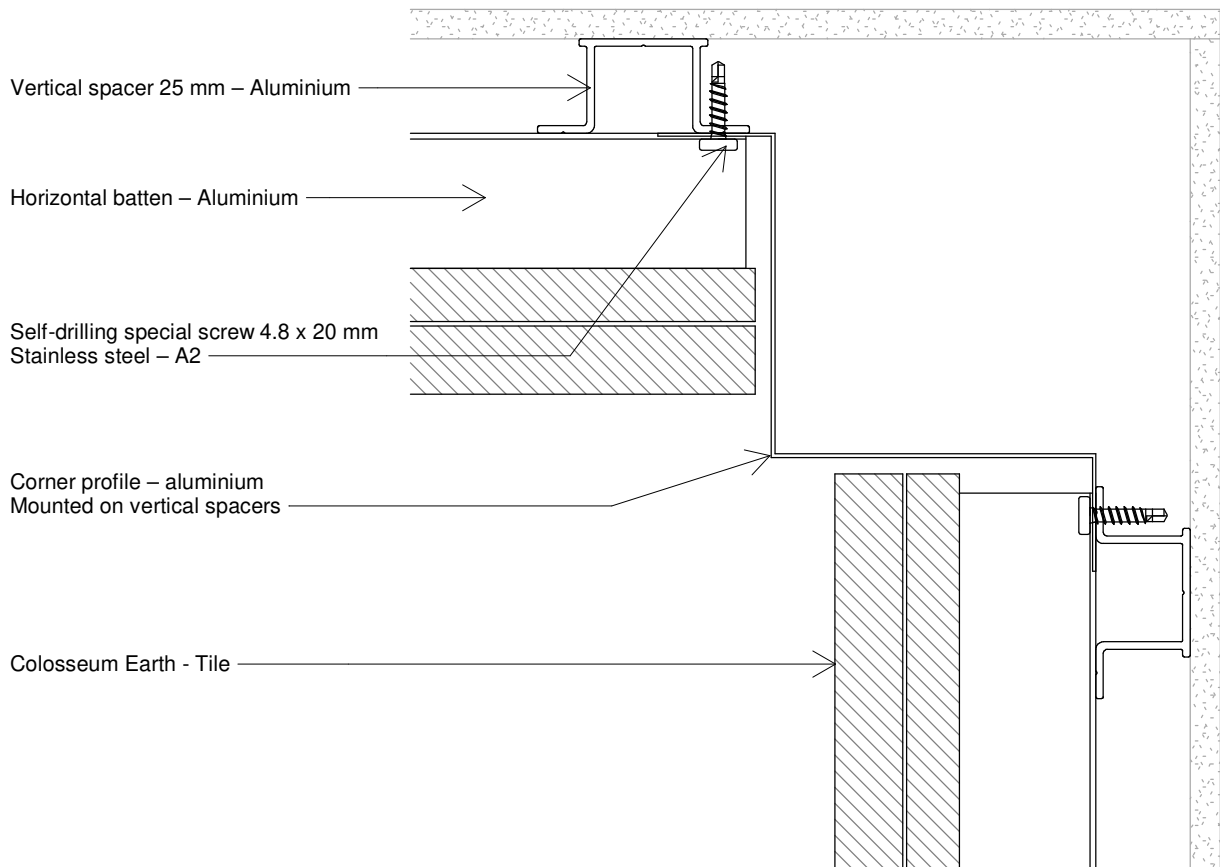
1 : 2

Colosseum Earth

Tel.: +45 96520710  
E-Mail: Teknik@komproment.dk  
Web: www.komproment.com

NOTE: Komproment makes these drawings available in the versions that exist. All use of the drawings is done at own risk and liability. The drawings are regularly updated with relevant updates/changes on our website. You are responsible for keeping up-to-date with these changes. The drawings are made available in the following formats: PDF and DWG. All drawings are for guidance. No guarantee is given that the drawings will fit all purposes.

**KOMPROMENT**  
DANISH BUILDING DESIGN



The drawing is not to scale. All measurements are in mm.

Copyright © Komproment Danish Building Design

CE - 11

Inside corner

Date: 06-07-2020

1 : 2

Colosseum Earth

Tel.: +45 96520710  
E-Mail: Teknik@komproment.dk  
Web: www.komproment.com

NOTE: Komproment makes these drawings available in the versions that exist. All use of the drawings is done at own risk and liability. The drawings are regularly updated with relevant updates/changes on our website. You are responsible for keeping up-to-date with these changes. The drawings are made available in the following formats: PDF and DWG. All drawings are for guidance. No guarantee is given that the drawings will fit all purposes.

**KOMPROMENT**  
DANISH BUILDING DESIGN

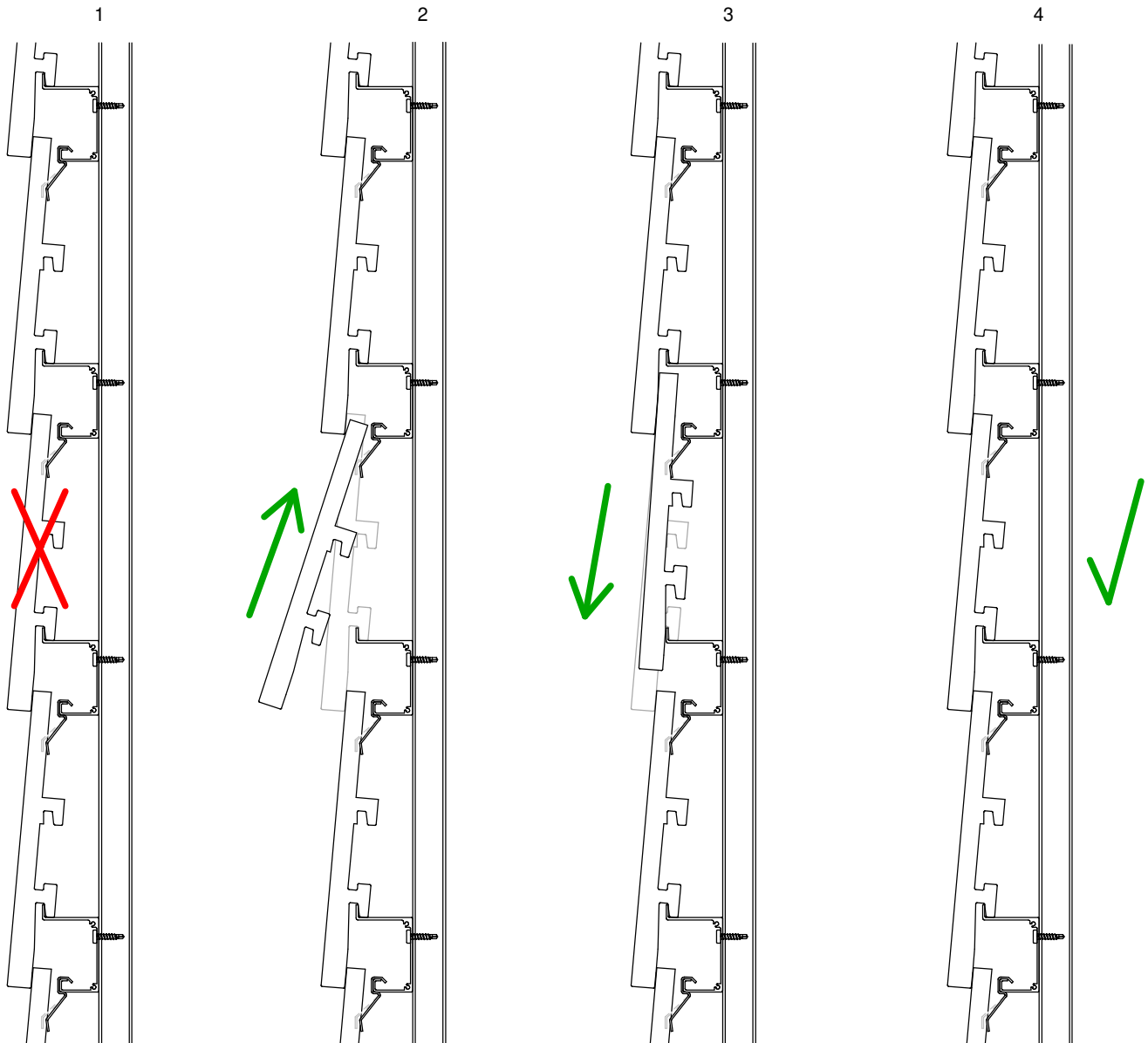
## Replacement/retrofitting

1: Remove the damaged tile entirely

2: Push a new tile up under the overlying tile. (If clips are damaged/deformed, replace with 2 new clips.)

3: Pull the tile down into place so it grips the aluminium batten. If necessary, use a suction cup to grip the clinker securely

4: Replacement is now complete. Check that the tile is lying securely. The tile must lie properly and securely.



The drawing is not to scale. All measurements are in mm.

Copyright © Komproment Danish Building Design

CE - 12

Replacement/retrofitting

Date: 06-07-2020

1 : 5

Colosseum Earth

Tel.: +45 96520710  
E-Mail: Teknik@komproment.dk  
Web: www.komproment.com

NOTE: Komproment makes these drawings available in the versions that exist. All use of the drawings is done at own risk and liability. The drawings are regularly updated with relevant updates/changes on our website. You are responsible for keeping up-to-date with these changes. The drawings are made available in the following formats: PDF and DWG. All drawings are for guidance. No guarantee is given that the drawings will fit all purposes.

**KOMPROMENT**  
DANISH BUILDING DESIGN

# General information

Colosseum Earth is a façade system with tile façade clinkers for covering existing as well as new buildings.

The façade system can be mounted directly onto the existing façade, on wooden frames or using aluminium battens.

The drawings and instructions are prepared for façades mounted in Denmark, Norway and Sweden, on the basis of installation on a wooden substructure.

Attachment between the substructure and the load-bearing building sections is not part of these instructions and must fulfil the applicable standards and regulations at all times, as well as being documented in the specific projects.

## Flatness tolerances for the back wall

Always check the substructure before mounting battens. Straightness requirement for the underlying structure, vertical and horizontal, tolerance: +/- 3 mm, measured with straight-edge over 2 m.

## Flashings

All flashings around windows, døre, gables, eaves, etc., in Komproment's drawings and instructions are examples only. All flashings must be reviewed, designed and planned out for the individual project.

Flashing is therefore not kept in stock by Komproment and has a delivery time of 2-3 weeks.

## Technical support

If you need advice and/or technical support you can always count on our assistance when you need it.

Komproment can help with:

- Getting started on installation at the start of larger projects
- Input for the documentation
- Other problems/issues.

For technical support, contact us on tel.: +45 96520710 or by email to [teknik@Komproment.dk](mailto:teknik@komproment.dk)

Opening times: Monday-Thursday from 8.00-16.00, Friday from 8.00-15.30.

## General

Komproment cannot be held responsible for project design or for project details, which are the responsibility of the architect and/or consulting engineer supervising the project at all times.

Komproment's drawings and instructions must be considered as guidelines for the purpose of sharing Komproment's experience. Komproment is therefore solely responsible for the delivered building materials and the quality of these.

The drawing is not to scale. All measurements are in mm.

Copyright © Komproment Danish Building Design

CE - 13

General information

Date: 06-07-2020

Colosseum Earth

Tel.: +45 96520710  
E-Mail: [Teknik@komproment.dk](mailto:Teknik@komproment.dk)  
Web: [www.komproment.com](http://www.komproment.com)

NOTE: Komproment makes these drawings available in the versions that exist. All use of the drawings is done at own risk and liability. The drawings are regularly updated with relevant updates/changes on our website. You are responsible for keeping up-to-date with these changes. The drawings are made available in the following formats: PDF and DWG. All drawings are for guidance. No guarantee is given that the drawings will fit all purposes.

**KOMPROMENT**  
DANISH BUILDING DESIGN