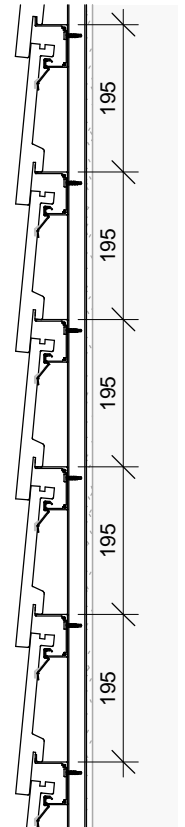


Front view  
1 : 10



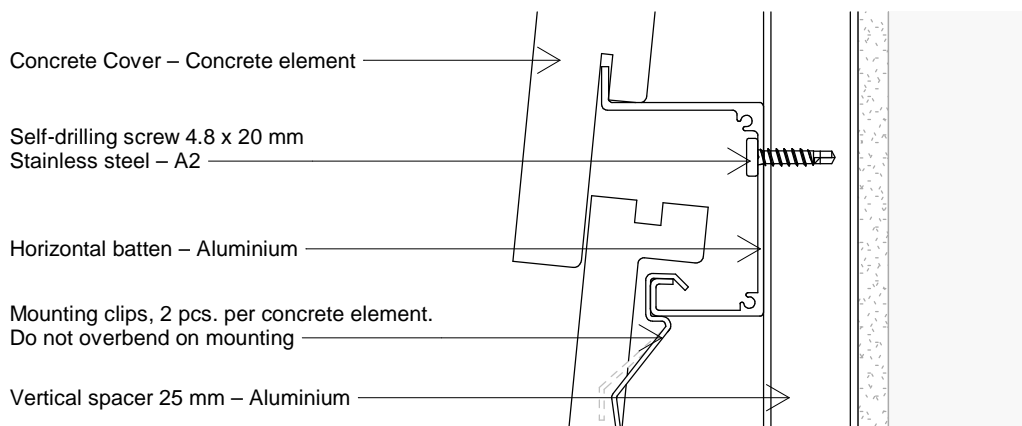
Vertical view  
1 : 10

The following points must be observed to achieve optimal results:

- Concrete Cover must be mixed from multiple pallets to achieve the desired play of colours (min. 4-6 pallets).
- Small breakage on corners and edges will appear as a natural part of the concrete elements.
- Recommended bond: Wild bond.
- Recommended minimum tile width for adjustments = 100 mm
- Batten distance: 195 mm

Gluing of Concrete Cover elements:

In situations where the use of Komproment façade adhesive is required, it is important to always glue Concrete element to Concrete element.



Vertical view  
1 : 2

The drawing is not to scale. All measurements are in mm.

Copyright © Komproment Danish Building Design

CC - 00

Concrete Cover

Date: 31-07-2020

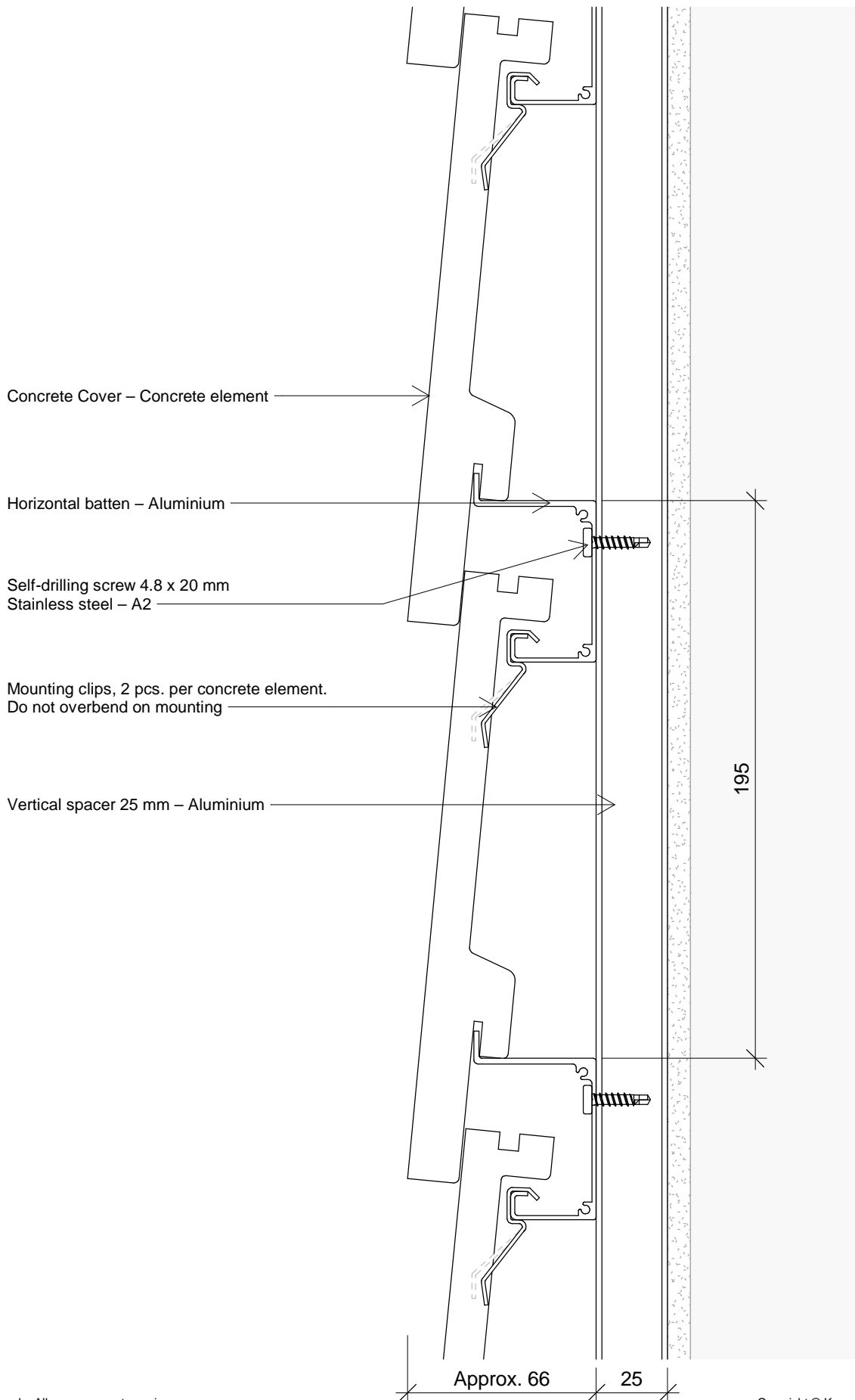
As indicated

Concrete Cover

Tlf: +45 96520710  
E-Mail: Teknik@komproment.dk  
Web: www.komproment.com

NOTE: Komproment makes these drawings available in the versions that exist. All use of the drawings is done at own risk and liability. The drawings are regularly updated with relevant updates/changes on our website. You are responsible for keeping up-to-date with these changes. The drawings are made available in the following formats: PDF and DWG. All drawings are for guidance. No guarantee is given that the drawings will fit all purposes.

**KOMPROMENT**  
DANISH BUILDING DESIGN



The drawing is not to scale. All measurements are in mm.

Copyright © Komproment Danish Building Design

CC - 01

Vertical view

Date: 31-07-2020

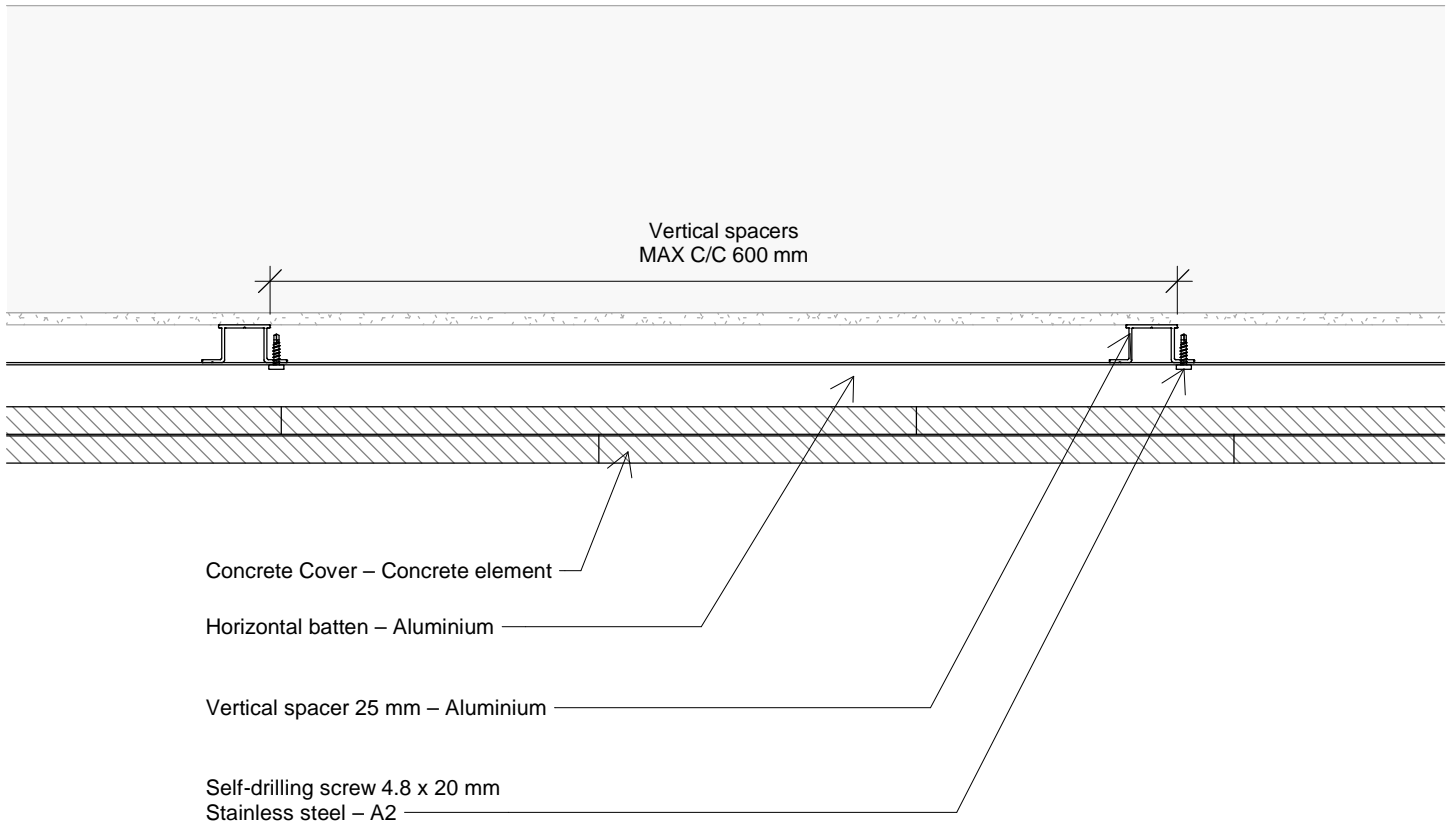
1 : 2

Concrete Cover

Tlf: +45 96520710  
E-Mail: Teknik@komproment.dk  
Web: www.komproment.com

NOTE: Komproment makes these drawings available in the versions that exist. All use of the drawings is done at own risk and liability. The drawings are regularly updated with relevant updates/changes on our website. You are responsible for keeping up-to-date with these changes. The drawings are made available in the following formats: PDF and DWG. All drawings are for guidance. No guarantee is given that the drawings will fit all purposes.

**KOMPROMENT**  
DANISH BUILDING DESIGN



The drawing is not to scale. All measurements are in mm.

Copyright © Komproment Danish Building Design

CC - 02

Horizontal view

Date: 31-07-2020

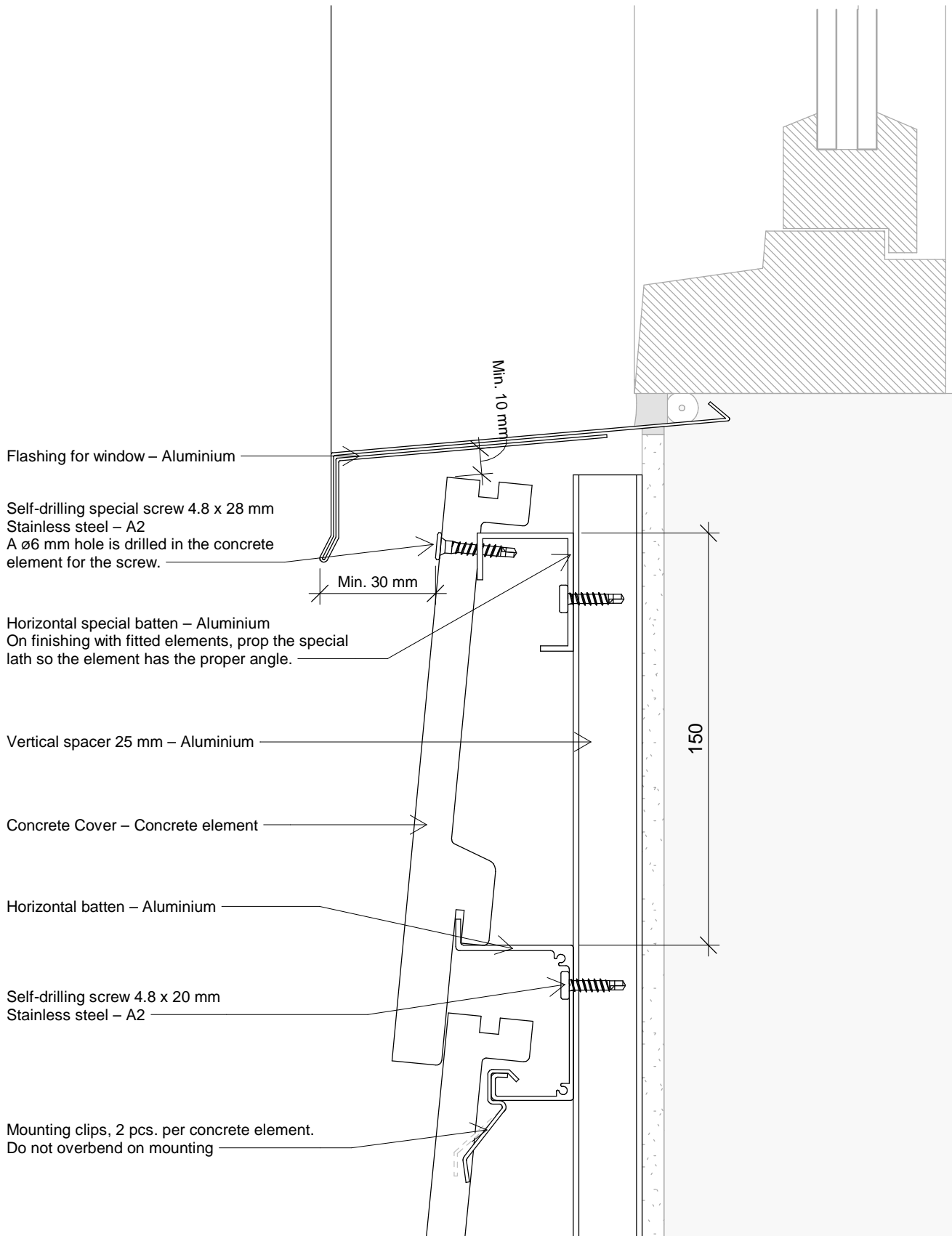
1 : 5

Concrete Cover

Tlf: +45 96520710  
E-Mail: Teknik@komproment.dk  
Web: www.komproment.com

NOTE: Komproment makes these drawings available in the versions that exist. All use of the drawings is done at own risk and liability. The drawings are regularly updated with relevant updates/changes on our website. You are responsible for keeping up-to-date with these changes. The drawings are made available in the following formats: PDF and DWG. All drawings are for guidance. No guarantee is given that the drawings will fit all purposes.

**KOMPROMENT**  
DANISH BUILDING DESIGN



The drawing is not to scale. All measurements are in mm.

Copyright © Komproment Danish Building Design

CC - 03

Under window

Date: 31-07-2020

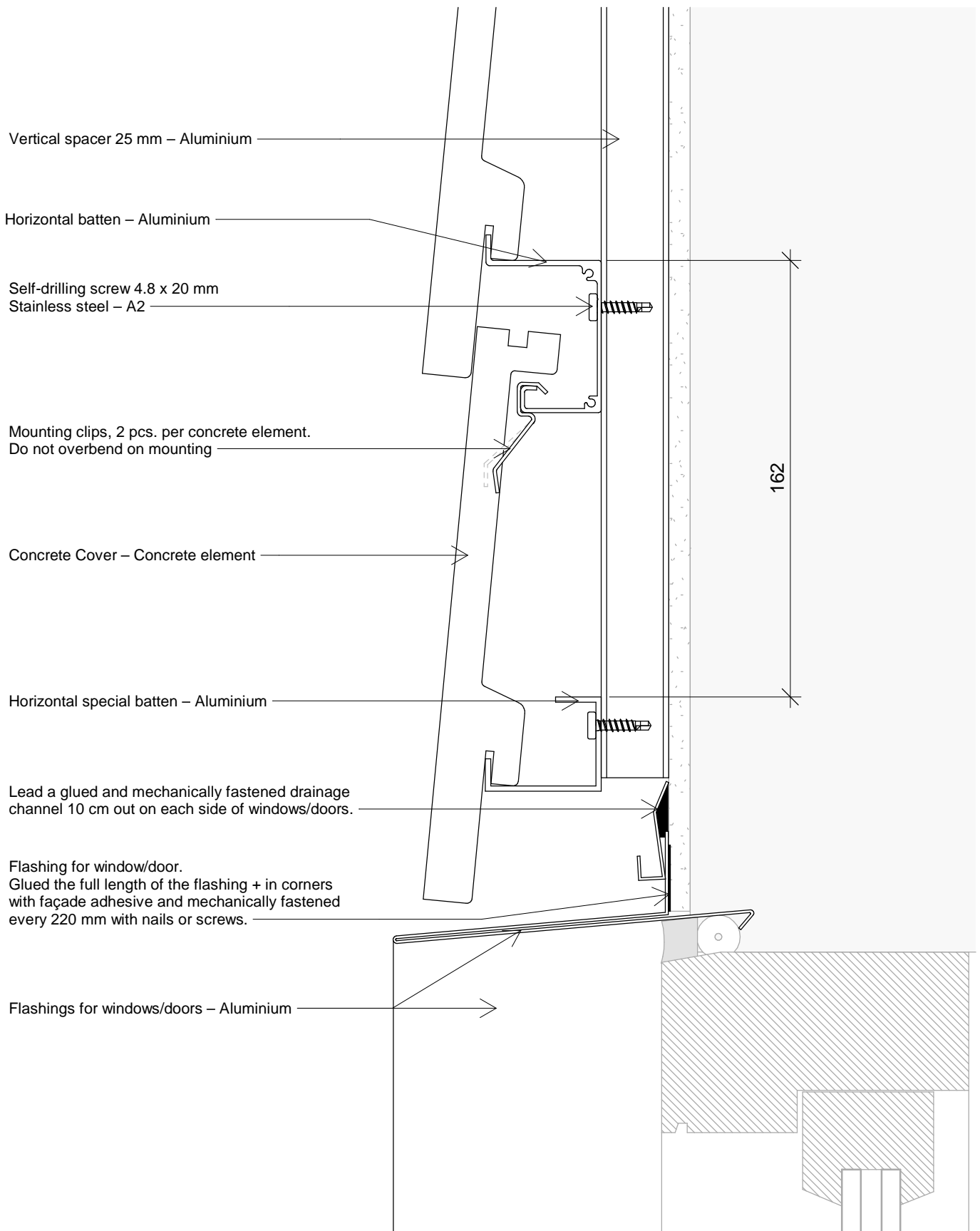
1 : 2

Concrete Cover

Tlf: +45 96520710  
E-Mail: Teknik@komproment.dk  
Web: www.komproment.com

NOTE: Komproment makes these drawings available in the versions that exist. All use of the drawings is done at own risk and liability. The drawings are regularly updated with relevant updates/changes on our website. You are responsible for keeping up-to-date with these changes. The drawings are made available in the following formats: PDF and DWG. All drawings are for guidance. No guarantee is given that the drawings will fit all purposes.

**KOMPROMENT**  
DANISH BUILDING DESIGN



The drawing is not to scale. All measurements are in mm.

Copyright © Komproment Danish Building Design

CC - 04

Top window/door

Date: 31-07-2020

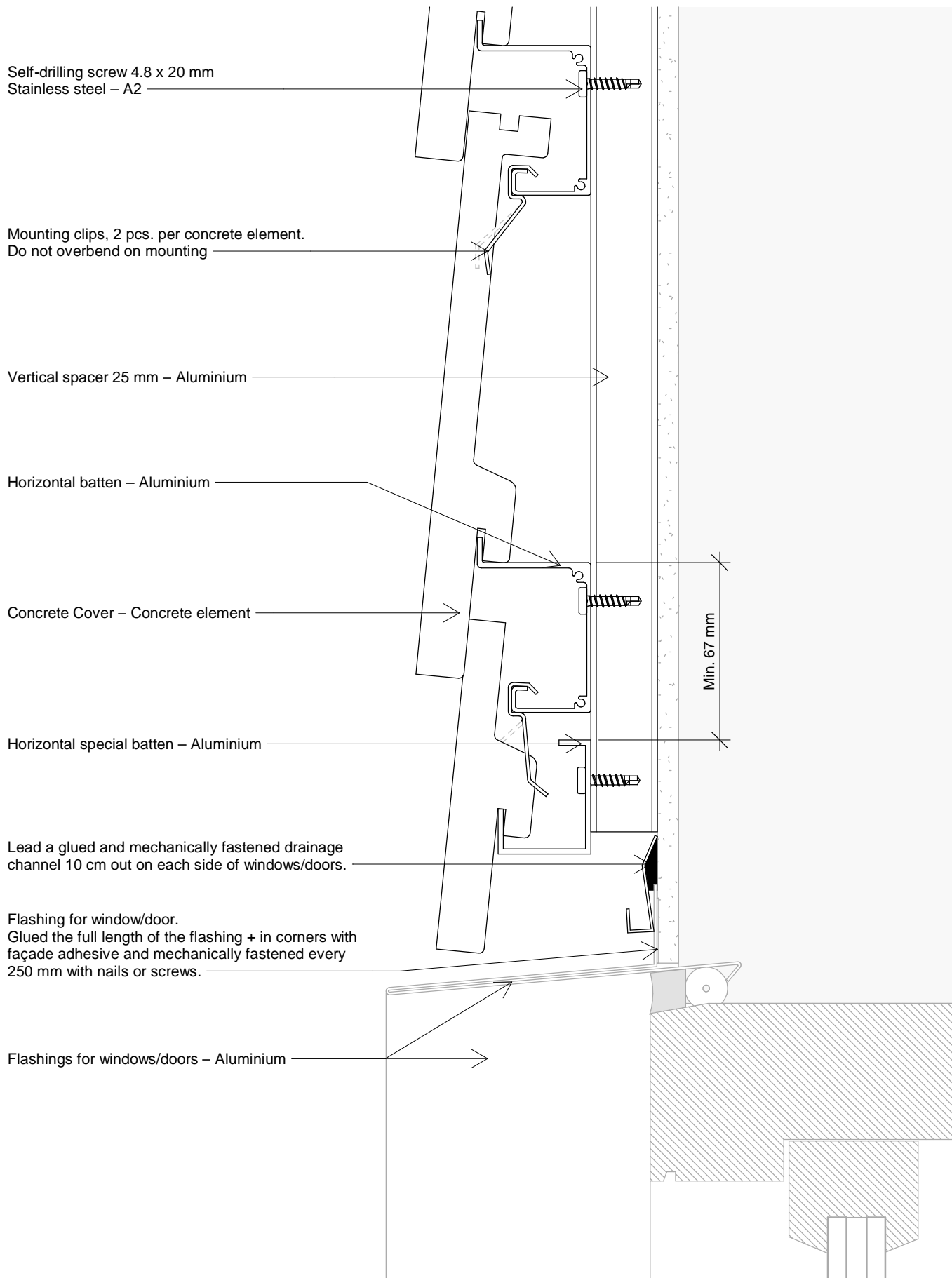
1 : 2

Concrete Cover

Tlf: +45 96520710  
E-Mail: Teknik@komproment.dk  
Web: www.komproment.com

NOTE: Komproment makes these drawings available in the versions that exist. All use of the drawings is done at own risk and liability. The drawings are regularly updated with relevant updates/changes on our website. You are responsible for keeping up-to-date with these changes. The drawings are made available in the following formats: PDF and DWG. All drawings are for guidance. No guarantee is given that the drawings will fit all purposes.

**KOMPROMENT**  
DANISH BUILDING DESIGN



The drawing is not to scale. All measurements are in mm.

Copyright © Komproment Danish Building Design

CC - 04-2

Top window/door 2

Date: 31-07-2020

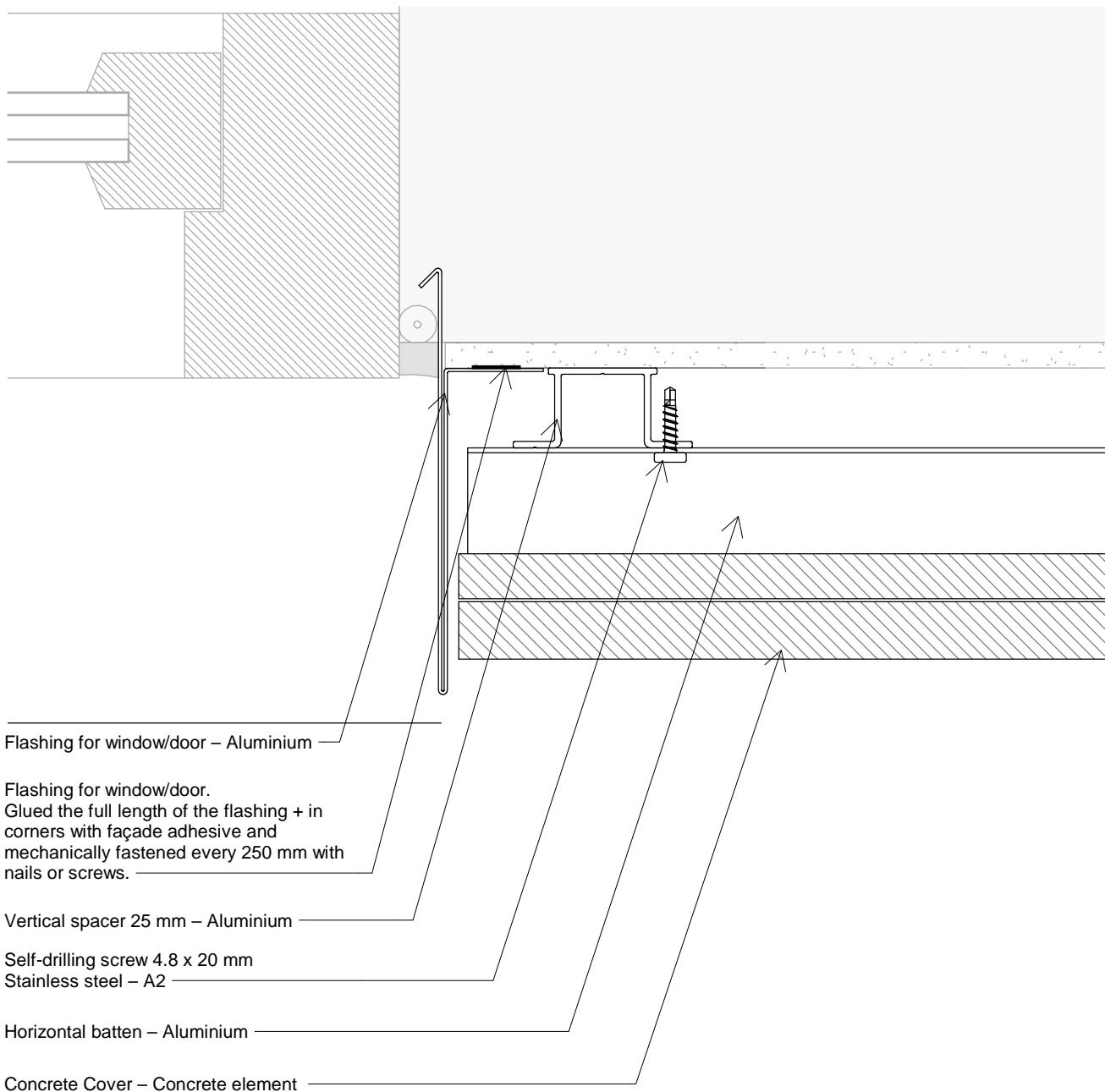
1 : 2

Concrete Cover

Tlf: +45 96520710  
E-Mail: Teknik@komproment.dk  
Web: www.komproment.com

NOTE: Komproment makes these drawings available in the versions that exist. All use of the drawings is done at own risk and liability. The drawings are regularly updated with relevant updates/changes on our website. You are responsible for keeping up-to-date with these changes. The drawings are made available in the following formats: PDF and DWG. All drawings are for guidance. No guarantee is given that the drawings will fit all purposes.

**KOMPROMENT**  
DANISH BUILDING DESIGN



The drawing is not to scale. All measurements are in mm.

Copyright © Komproment Danish Building Design

CC - 05

Window/door – horizontal view

Date: 31-07-2020

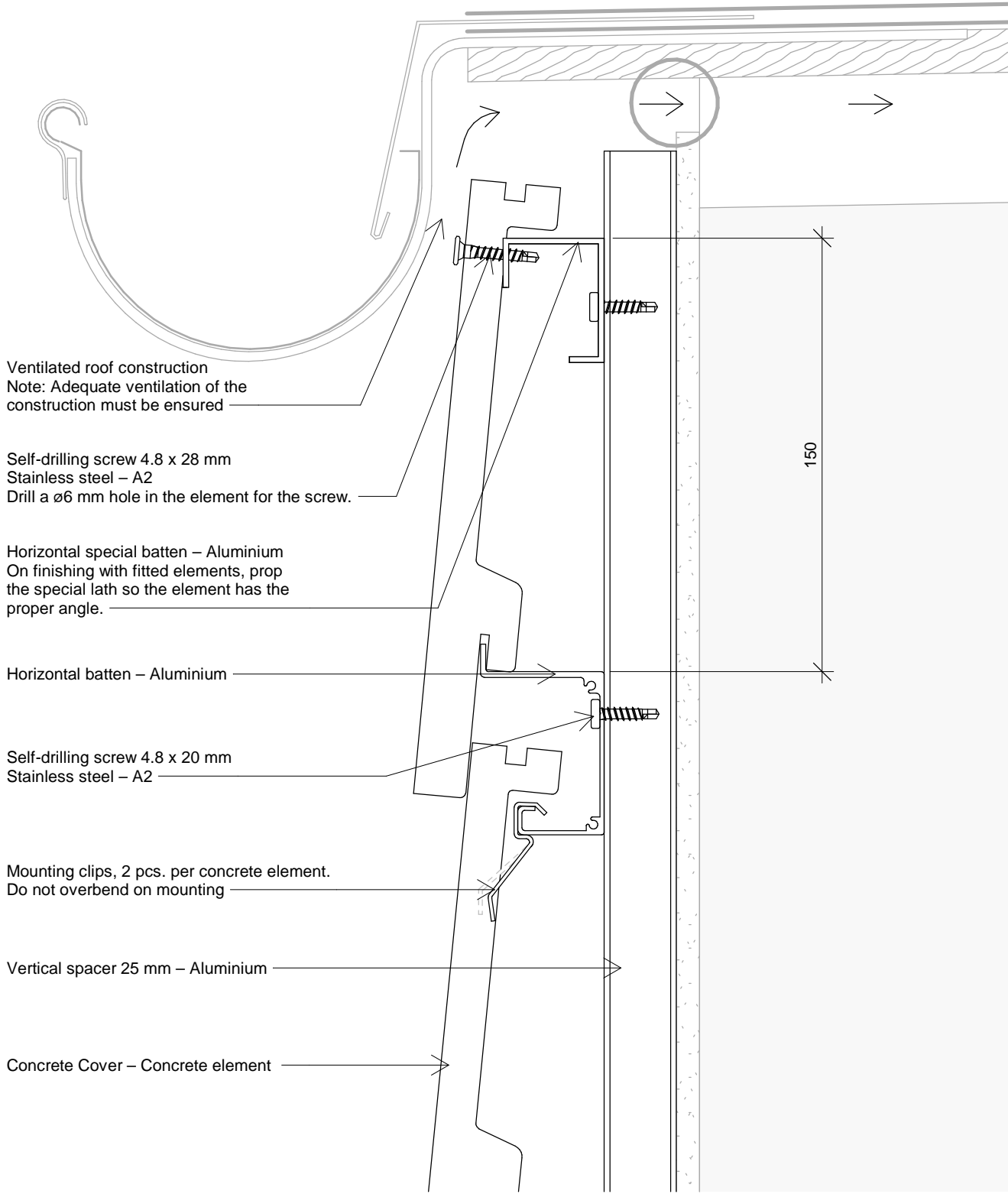
1 : 2

Concrete Cover

Tlf: +45 96520710  
E-Mail: Teknik@komproment.dk  
Web: www.komproment.com

NOTE: Komproment makes these drawings available in the versions that exist. All use of the drawings is done at own risk and liability. The drawings are regularly updated with relevant updates/changes on our website. You are responsible for keeping up-to-date with these changes. The drawings are made available in the following formats: PDF and DWG. All drawings are for guidance. No guarantee is given that the drawings will fit all purposes.

**KOMPROMENT**  
DANISH BUILDING DESIGN



The drawing is not to scale. All measurements are in mm.

Copyright © Komproment Danish Building Design

CC - 06

Base of roof/finishing at top

Date: 31-07-2020

1 : 2

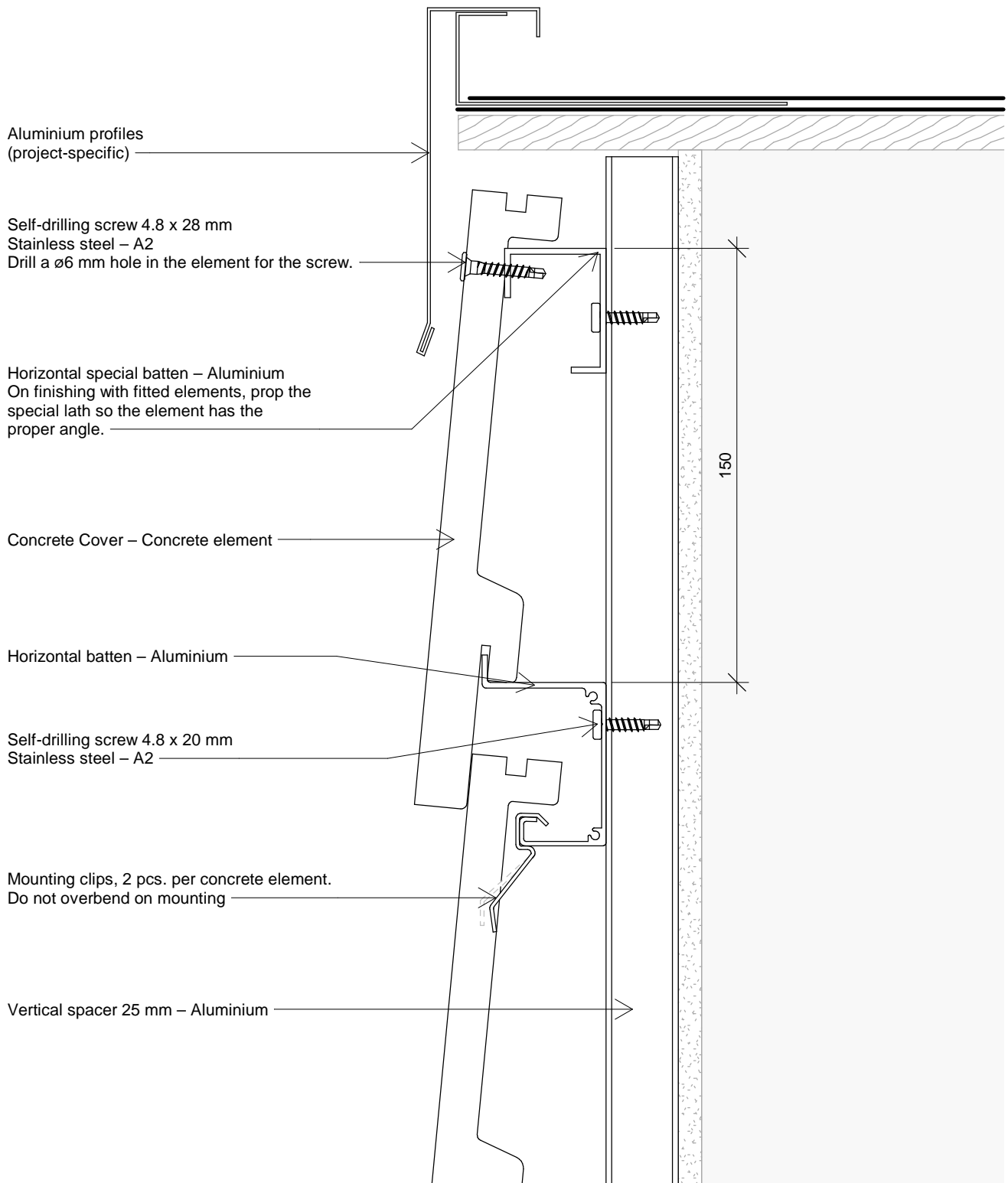
Concrete Cover

Tlf: +45 96520710  
E-Mail: Teknik@komproment.dk  
Web: www.komproment.com

NOTE: Komproment makes these drawings available in the versions that exist. All use of the drawings is done at own risk and liability. The drawings are regularly updated with relevant updates/changes on our website. You are responsible for keeping up-to-date with these changes. The drawings are made available in the following formats: PDF and DWG. All drawings are for guidance. No guarantee is given that the drawings will fit all purposes.

**KOMPROMENT**  
DANISH BUILDING DESIGN





The drawing is not to scale. All measurements are in mm.

Copyright © Komproment Danish Building Design

CC - 07

Gable

Date: 31-07-2020

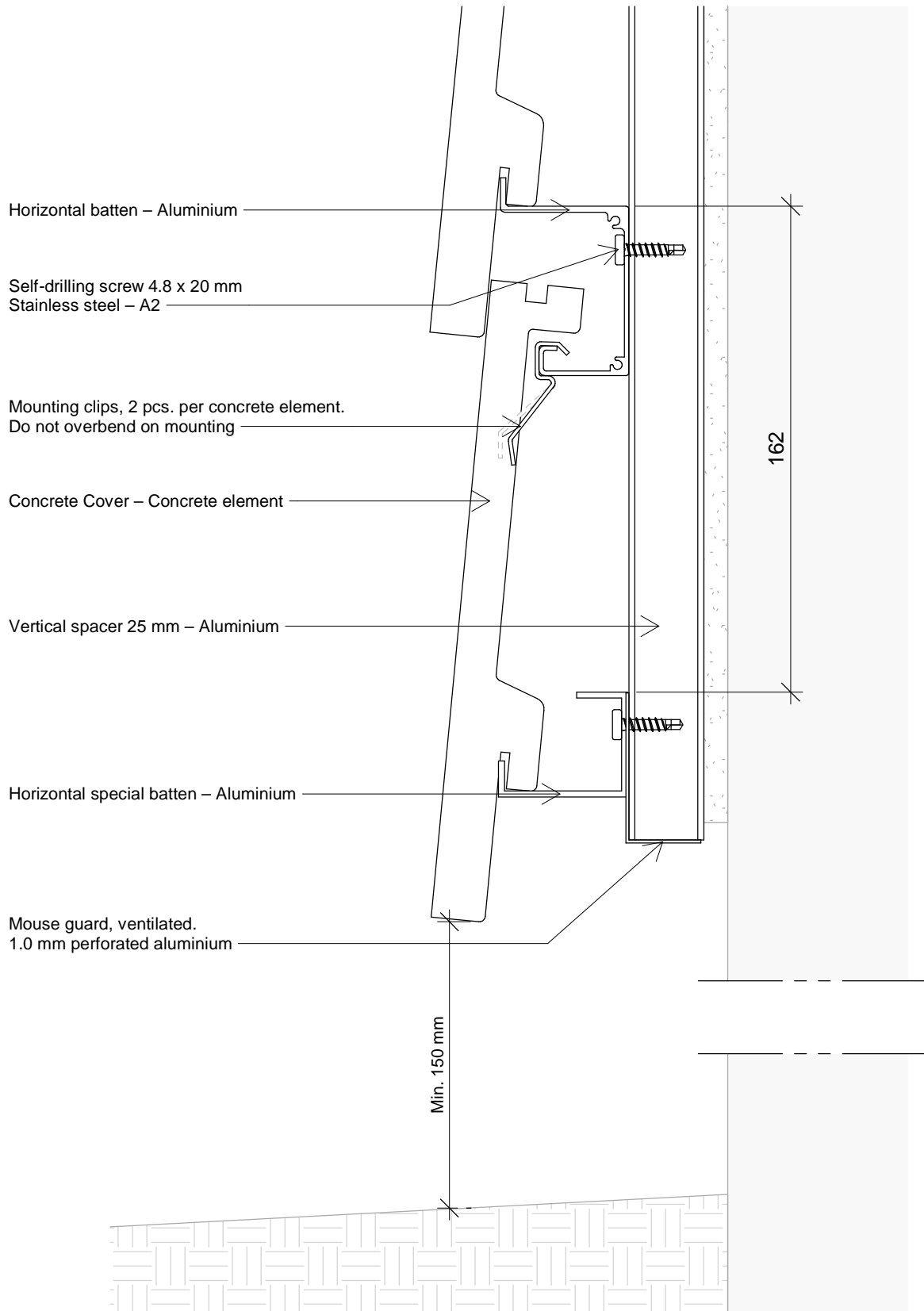
1 : 2

Concrete Cover

Tlf: +45 96520710  
E-Mail: Teknik@komproment.dk  
Web: www.komproment.com

NOTE: Komproment makes these drawings available in the versions that exist. All use of the drawings is done at own risk and liability. The drawings are regularly updated with relevant updates/changes on our website. You are responsible for keeping up-to-date with these changes. The drawings are made available in the following formats: PDF and DWG. All drawings are for guidance. No guarantee is given that the drawings will fit all purposes.

**KOMPROMENT**  
DANISH BUILDING DESIGN



The drawing is not to scale. All measurements are in mm.

Copyright © Komproment Danish Building Design

CC - 08

Start façade

Date: 31-07-2020

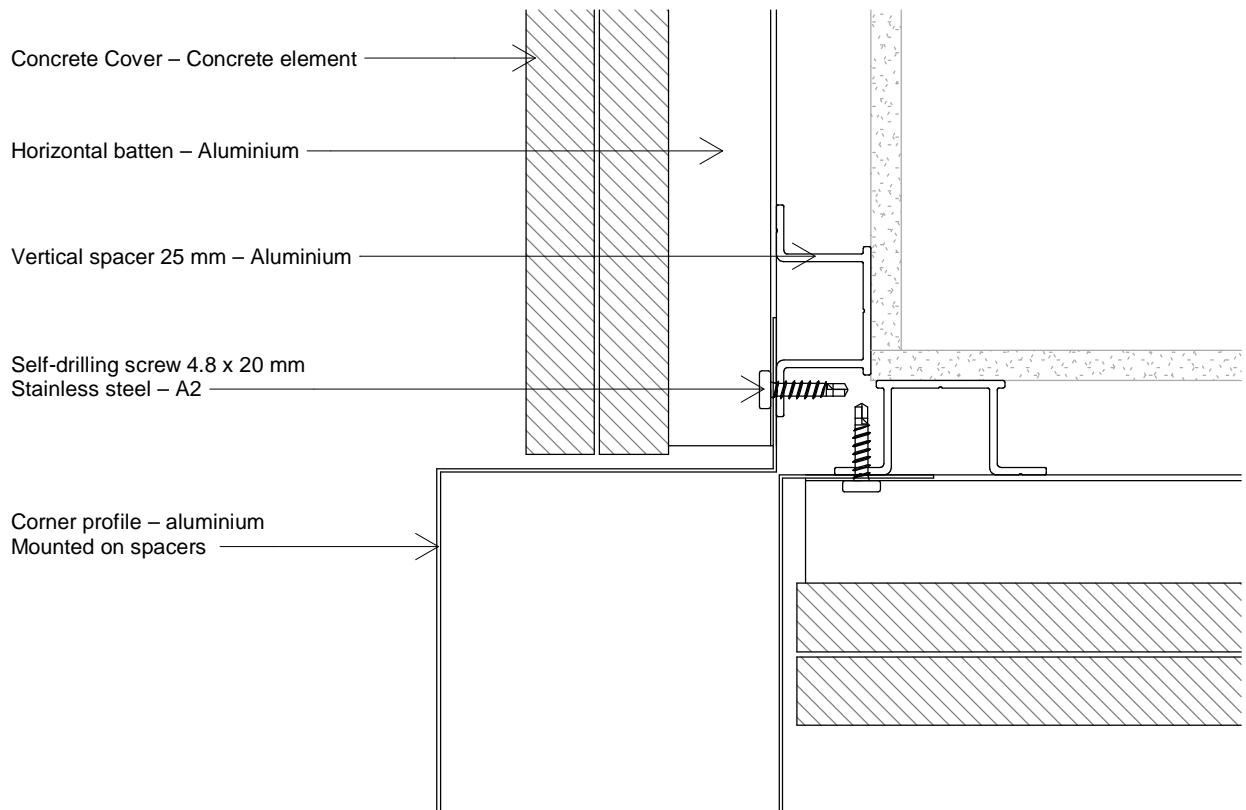
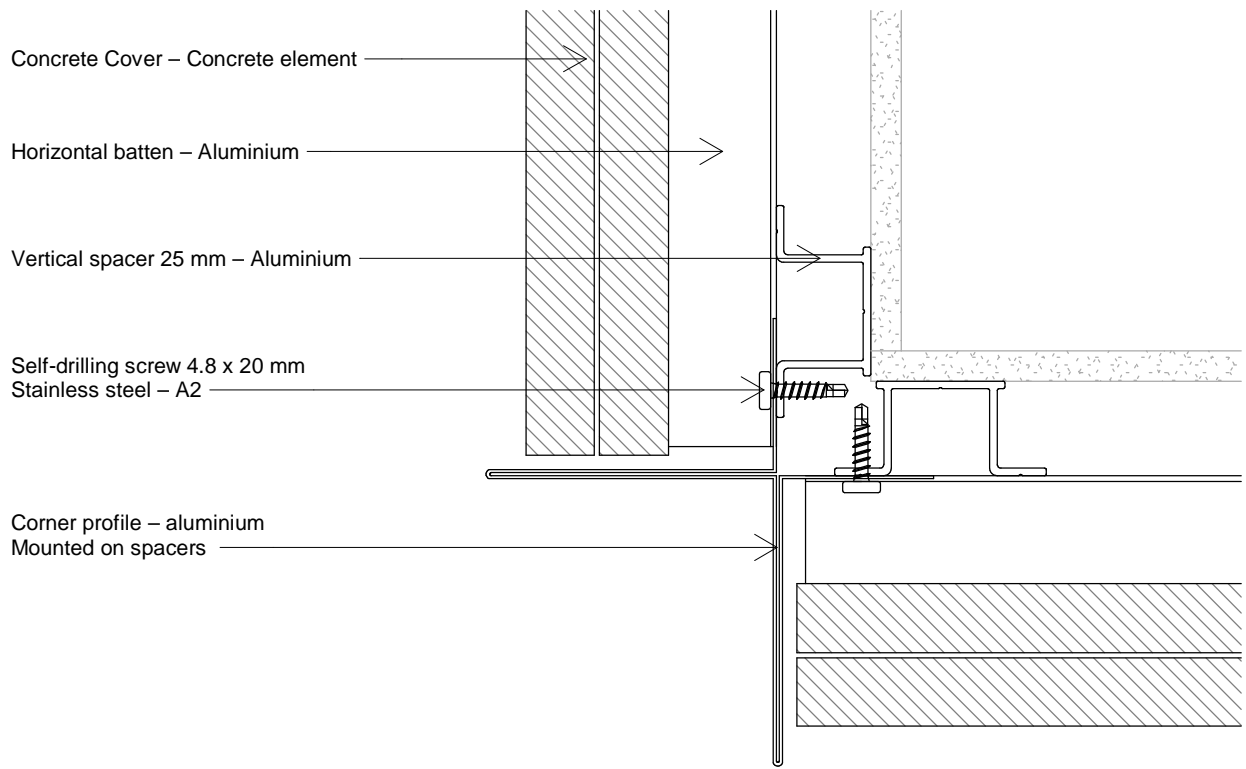
1 : 2

Concrete Cover

Tlf: +45 96520710  
E-Mail: Teknik@komproment.dk  
Web: www.komproment.com

NOTE: Komproment makes these drawings available in the versions that exist. All use of the drawings is done at own risk and liability. The drawings are regularly updated with relevant updates/changes on our website. You are responsible for keeping up-to-date with these changes. The drawings are made available in the following formats: PDF and DWG. All drawings are for guidance. No guarantee is given that the drawings will fit all purposes.

**KOMPROMENT**  
DANISH BUILDING DESIGN



The drawing is not to scale. All measurements are in mm.

Copyright © Komproment Danish Building Design

CC - 09

Outside corner

Date: 31-07-2020

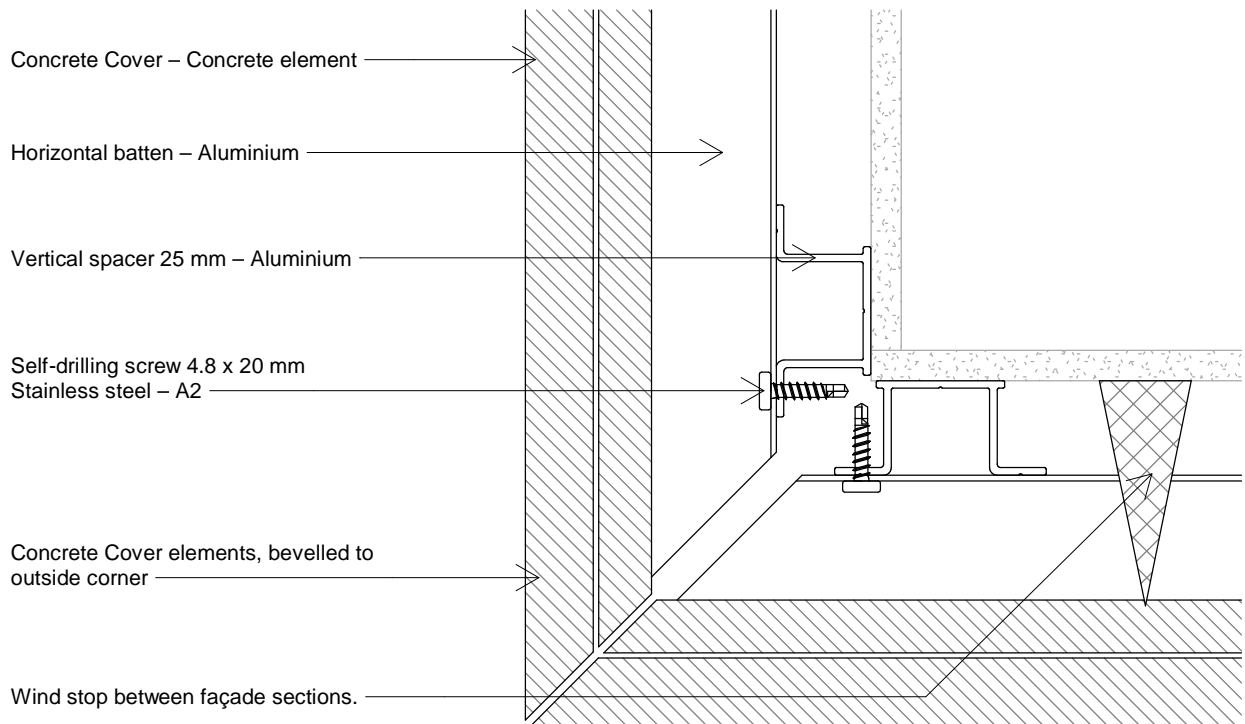
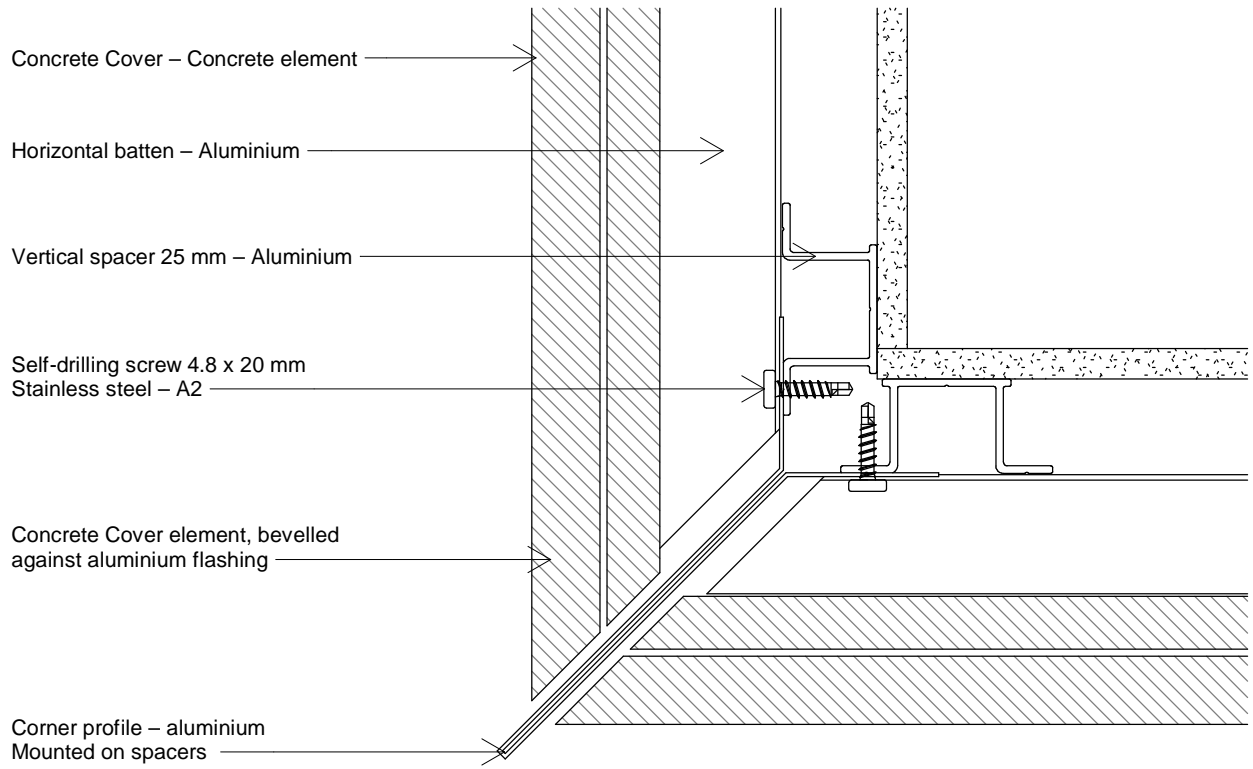
1 : 2

Concrete Cover

Tlf: +45 96520710  
E-Mail: Teknik@komproment.dk  
Web: www.komproment.com

NOTE: Komproment makes these drawings available in the versions that exist. All use of the drawings is done at own risk and liability. The drawings are regularly updated with relevant updates/changes on our website. You are responsible for keeping up-to-date with these changes. The drawings are made available in the following formats: PDF and DWG. All drawings are for guidance. No guarantee is given that the drawings will fit all purposes.

**KOMPROMENT**  
DANISH BUILDING DESIGN



The drawing is not to scale. All measurements are in mm.

Copyright © Komproment Danish Building Design

CC - 10

Outside corner 2

Date: 31-07-2020

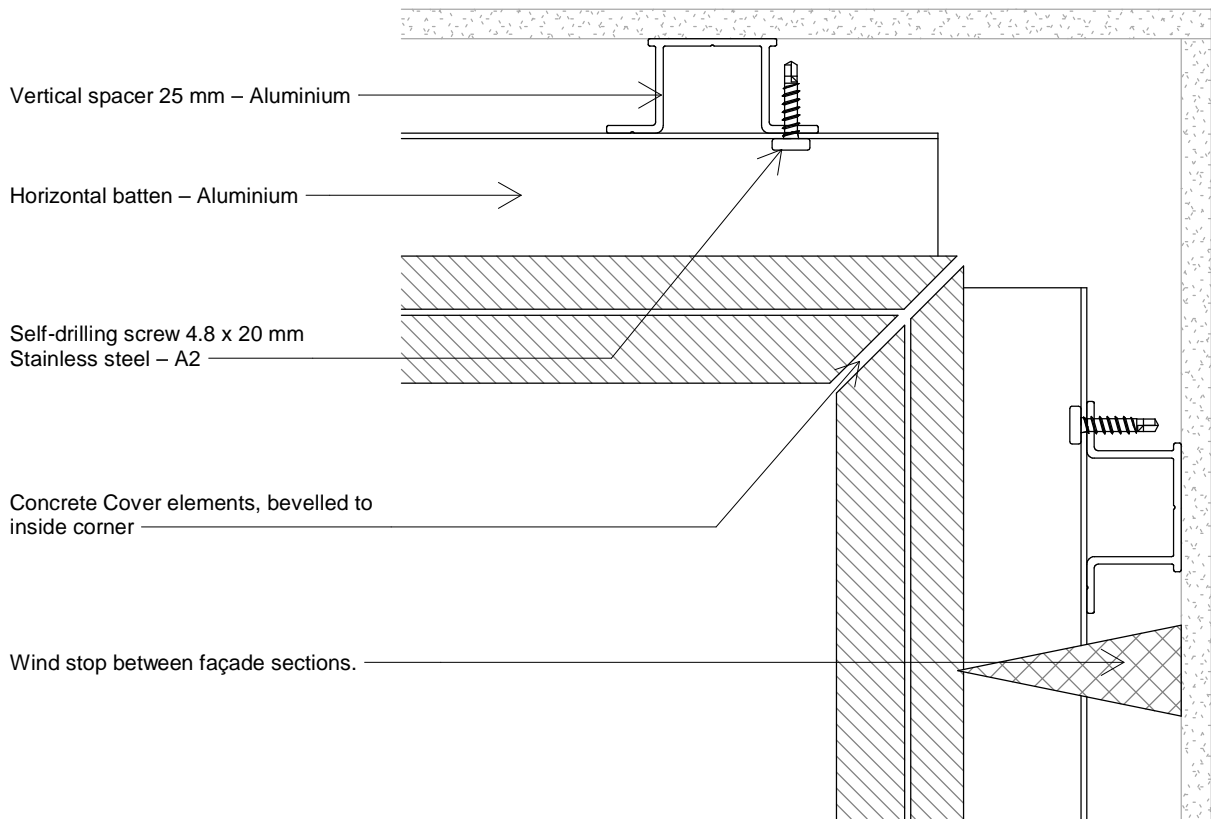
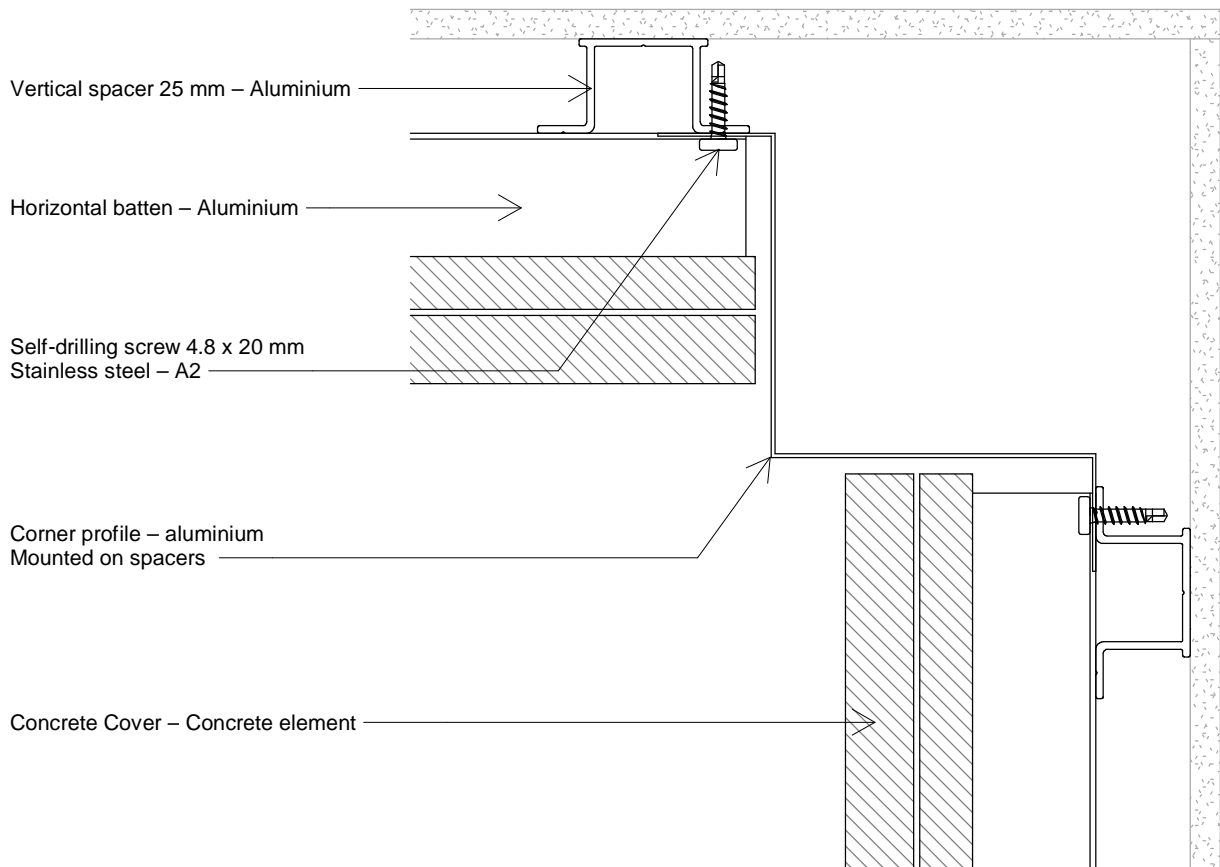
1 : 2

Concrete Cover

Tlf: +45 96520710  
E-Mail: Teknik@komproment.dk  
Web: www.komproment.com

NOTE: Komproment makes these drawings available in the versions that exist. All use of the drawings is done at own risk and liability. The drawings are regularly updated with relevant updates/changes on our website. You are responsible for keeping up-to-date with these changes. The drawings are made available in the following formats: PDF and DWG. All drawings are for guidance. No guarantee is given that the drawings will fit all purposes.

**KOMPROMENT**  
DANISH BUILDING DESIGN



The drawing is not to scale. All measurements are in mm.

Copyright © Komproment Danish Building Design

CC - 11

Inside corner

Date: 31-07-2020

1 : 2

Concrete Cover

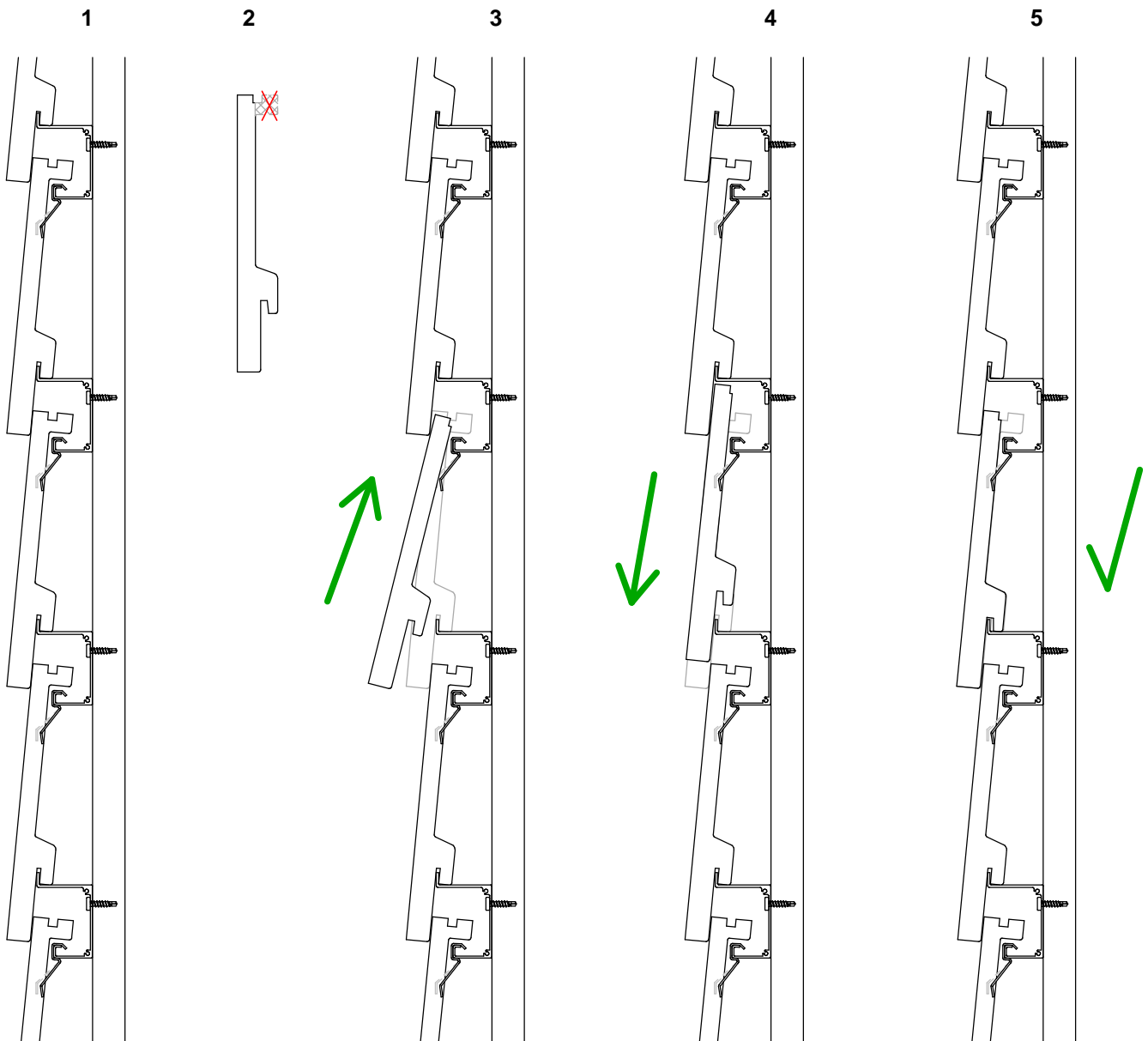
Tlf: +45 96520710  
E-Mail: Teknik@komproment.dk  
Web: www.komproment.com

NOTE: Komproment makes these drawings available in the versions that exist. All use of the drawings is done at own risk and liability. The drawings are regularly updated with relevant updates/changes on our website. You are responsible for keeping up-to-date with these changes. The drawings are made available in the following formats: PDF and DWG. All drawings are for guidance. No guarantee is given that the drawings will fit all purposes.

**KOMPROMENT**  
DANISH BUILDING DESIGN

## Replacement

- 1: Remove the damaged concrete element entirely.
- 2: Fit a new concrete element by cutting the “neck” off; see the illustration below. It is recommended to use a wet cutter to cut the concrete element.
- 3: Push the fitted concrete element up under the overlying element. (If clips are damaged/deformed, replace with 2 new clips.)
- 4: Pull the concrete element down into place so it grips the aluminium lath. If necessary, use a suction cup to grip the concrete element securely.
- 5: Replacement is now complete. Check that the concrete element is lying securely. The clinker must lie properly and securely.



The drawing is not to scale. All measurements are in mm.

Copyright © Komproment Danish Building Design

CC - 12

Replacement

Date: 31-07-2020

1 : 5

Concrete Cover

Tlf: +45 96520710  
E-Mail: Teknik@komproment.dk  
Web: www.komproment.com

NOTE: Komproment makes these drawings available in the versions that exist. All use of the drawings is done at own risk and liability. The drawings are regularly updated with relevant updates/changes on our website. You are responsible for keeping up-to-date with these changes. The drawings are made available in the following formats: PDF and DWG. All drawings are for guidance. No guarantee is given that the drawings will fit all purposes.

**KOMPROMENT**  
DANISH BUILDING DESIGN

# General information

Concrete Cover is a façade system with cement façade clinkers for covering existing as well as new buildings.

The façade system can be mounted directly onto the existing façade, on wooden frames or using aluminium battens.

The drawings and instructions are prepared for façades mounted in Denmark, Norway and Sweden, on the basis of installation on a wooden substructure.

Attachment between the substructure and the load-bearing building sections is not part of these instructions and must fulfil the applicable standards and regulations at all times, as well as being documented in the specific projects.

## Flatness tolerances for the back wall

Always check the substructure before mounting battens. Straightness requirement for the underlying structure, vertical and horizontal, tolerance: +/- 3 mm, measured with straight-edge over 2 m.

## Flashings

All flashings around windows, døre, gables, eaves, etc., in Komproment's drawings and instructions are examples only. All flashings must be reviewed, designed and planned out for the individual project.

Flashing is therefore not kept in stock by Komproment and has a delivery time of 2-3 weeks.

## Technical support

If you need advice and/or technical support you can always count on our assistance when you need it.

Komproment can help with:

- Getting started on installation at the start of larger projects
- Input for the documentation
- Other problems/issues.

For technical support, contact us on tel.: +45 96520710 or by email to [teknik@Komproment.dk](mailto:teknik@komproment.dk)  
Opening times: Monday-Thursday from 8.00-16.00, Friday from 8.00-15.30.

## General

Komproment cannot be held responsible for project design or for project details, which are the responsibility of the architect and/or consulting engineer supervising the project at all times.

Komproment's drawings and instructions must be considered as guidelines for the purpose of sharing Komproment's experience. Komproment is therefore solely responsible for the delivered building materials and the quality of these.

The drawing is not to scale. All measurements are in mm.

Copyright © Komproment Danish Building Design

CC - 13

General information

Date: 31-07-2020

Concrete Cover

Tlf: +45 96520710  
E-Mail: [teknik@komproment.dk](mailto:teknik@komproment.dk)  
Web: [www.komproment.com](http://www.komproment.com)

NOTE: Komproment makes these drawings available in the versions that exist. All use of the drawings is done at own risk and liability. The drawings are regularly updated with relevant updates/changes on our website. You are responsible for keeping up-to-date with these changes. The drawings are made available in the following formats: PDF and DWG. All drawings are for guidance. No guarantee is given that the drawings will fit all purposes.

**KOMPROMENT**  
DANISH BUILDING DESIGN