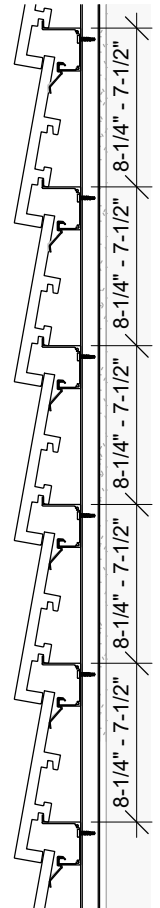


Front view
1 : 10



Vertical view
1 : 10

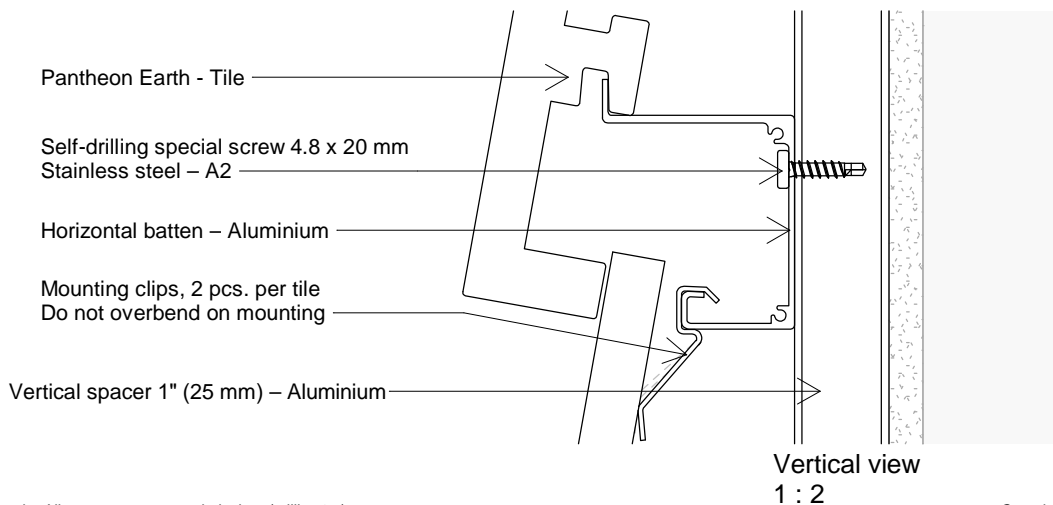
Pantheon Earth tiles is a rough ceramic product and has the small distinctive features that characterise this natural product. There will be variation in the surface and size of each tile.

The following points must be observed to achieve optimal results:

- Colosseum Earth tiles MUST be mixed from multiple pallets to achieve the desired color variation (Min 4-6 pallets).
- Colosseum Earth is a ceramic product and breakage on corners and edges will appear as a natural part of the tiles.
- Recommended bond: Wild bond.
- Recommended minimum tile width for adjustments = 3-15/16 inches (100 mm)
- Max batten distance (Standard): 8-1/4 inches (210 mm)
- Minimum batten distance: 7-1/2 inches (190 mm)

Gluing of tiles:

In situations where the use of Komproment façade adhesive is required, it is important to always glue tile to tile.



The drawing is not to scale. All measurements are in inches (millimeter).

Copyright © Komproment Danish Building Design

PE - 00

Pantheon Earth

Date: 06-07-2020

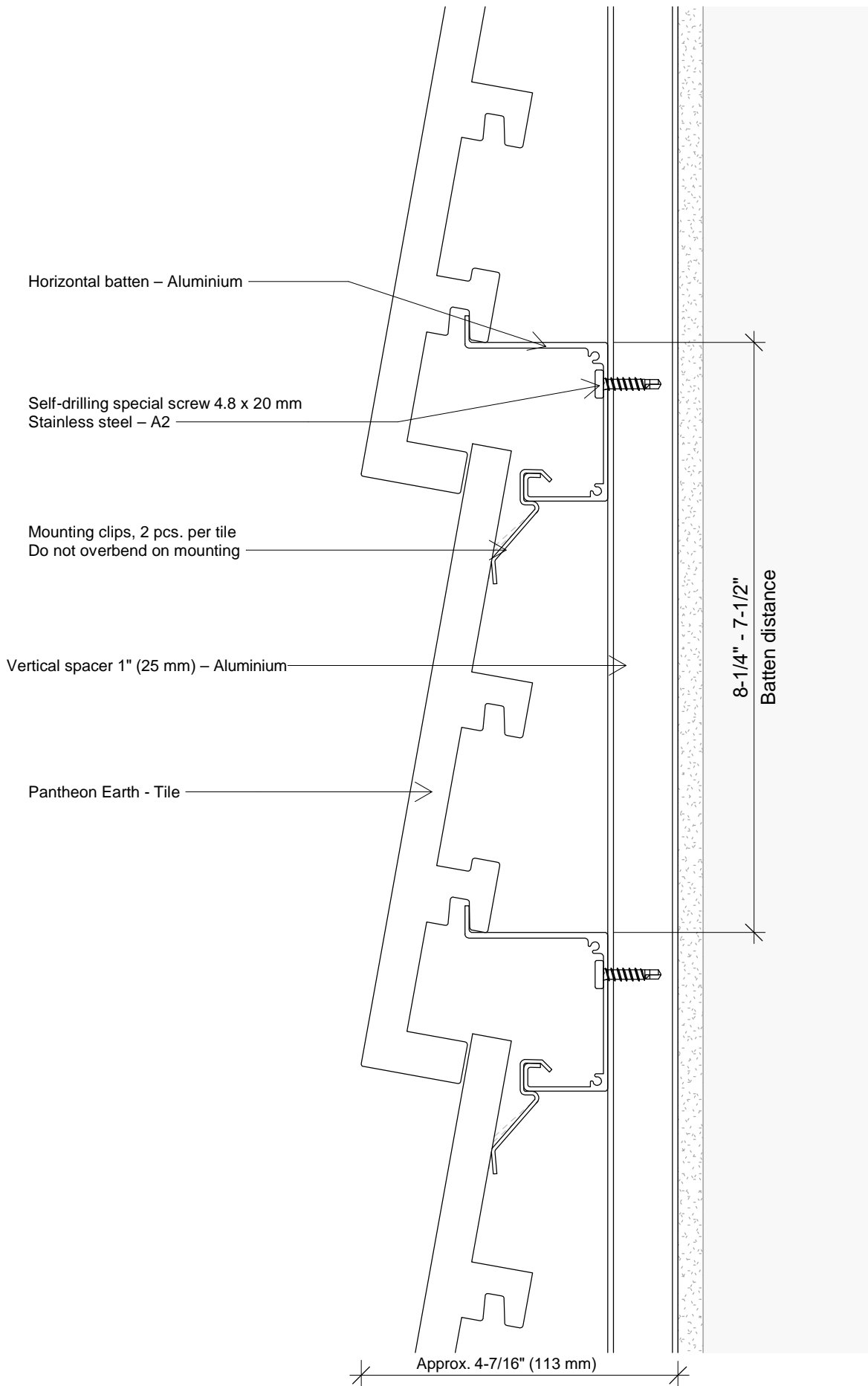
As indicated

Pantheon Earth

Tel.: +45 96520710
E-Mail: Teknik@komproment.dk
Web: www.komproment.com

NOTE: This Details Folder will be updated regularly and the latest version is available on our website at <http://www.komproment.com>. You are responsible to review the most up to date version prior to commencing installation. Drawings are available on our website in the following formats: PDF and DWG. All drawings are for reference purposes only. The installer is responsible for ensuring compliance with all local and federal laws, rules, and regulations. KOMPROMENT is not responsible or liable for any misprints in this Installation Guide or its website.

KOMPROMENT
DANISH BUILDING DESIGN



The drawing is not to scale. All measurements are in inches (millimeter).

Copyright © Komproment Danish Building Design

PE - 01

Vertical view

Date: 06-07-2020

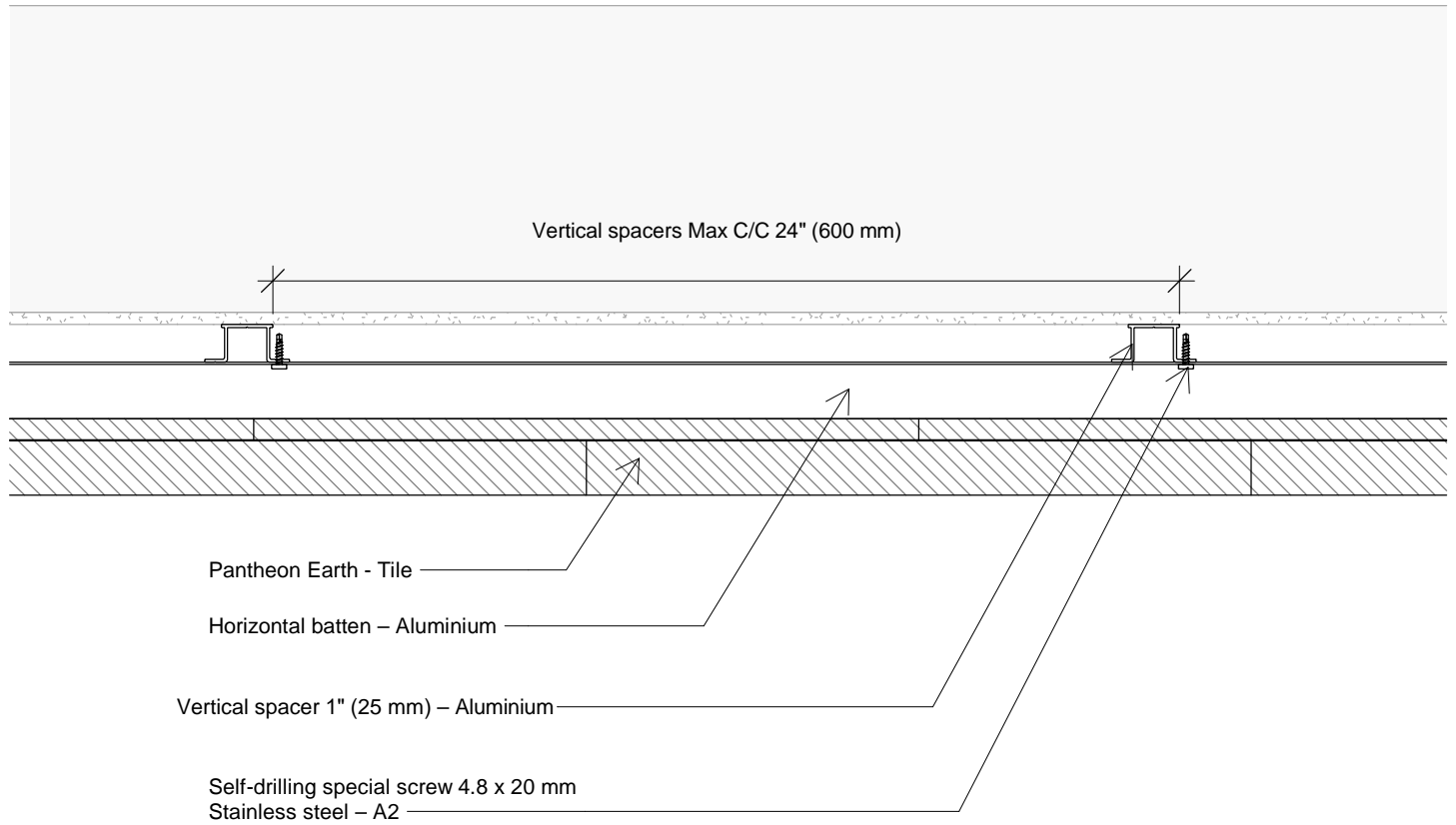
1 : 2

Pantheon Earth

Tel.: +45 96520710
E-Mail: Teknik@komproment.dk
Web: www.komproment.com

NOTE: This Details Folder will be updated regularly and the latest version is available on our website at <http://www.komproment.com>. You are responsible to review the most up to date version prior to commencing installation. Drawings are available on our website in the following formats: PDF and DWG. All drawings are for reference purposes only. The installer is responsible for ensuring compliance with all local and federal laws, rules, and regulations. KOMPROMENT is not responsible or liable for any misprints in this Installation Guide or its website.

KOMPROMENT
DANISH BUILDING DESIGN



The drawing is not to scale. All measurements are in inches (millimeter).

Copyright © Komproment Danish Building Design

PE - 02

Horizontal view

Date: 06-07-2020

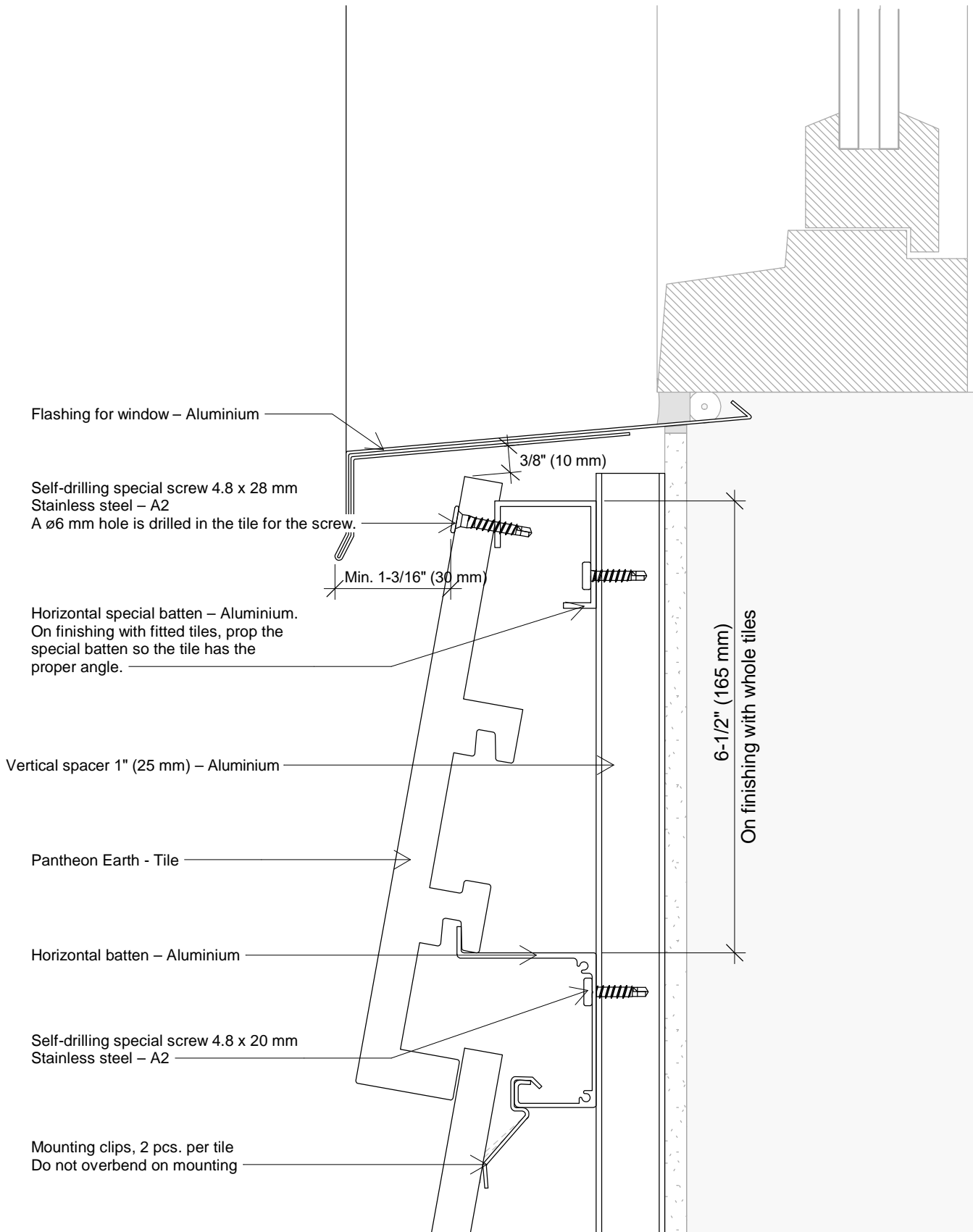
1 : 5

Pantheon Earth

Tel.: +45 96520710
E-Mail: Teknik@komproment.dk
Web: www.komproment.com

NOTE: This Details Folder will be updated regularly and the latest version is available on our website at <http://www.komproment.com>. You are responsible to review the most up to date version prior to commencing installation. Drawings are available on our website in the following formats: PDF and DWG. All drawings are for reference purposes only. The installer is responsible for ensuring compliance with all local and federal laws, rules, and regulations. KOMPROMENT is not responsible or liable for any misprints in this Installation Guide or its website.

KOMPROMENT
DANISH BUILDING DESIGN



The drawing is not to scale. All measurements are in inches (millimeter).

Copyright © Komproment Danish Building Design

PE - 03

Under window

Date: 06-07-2020

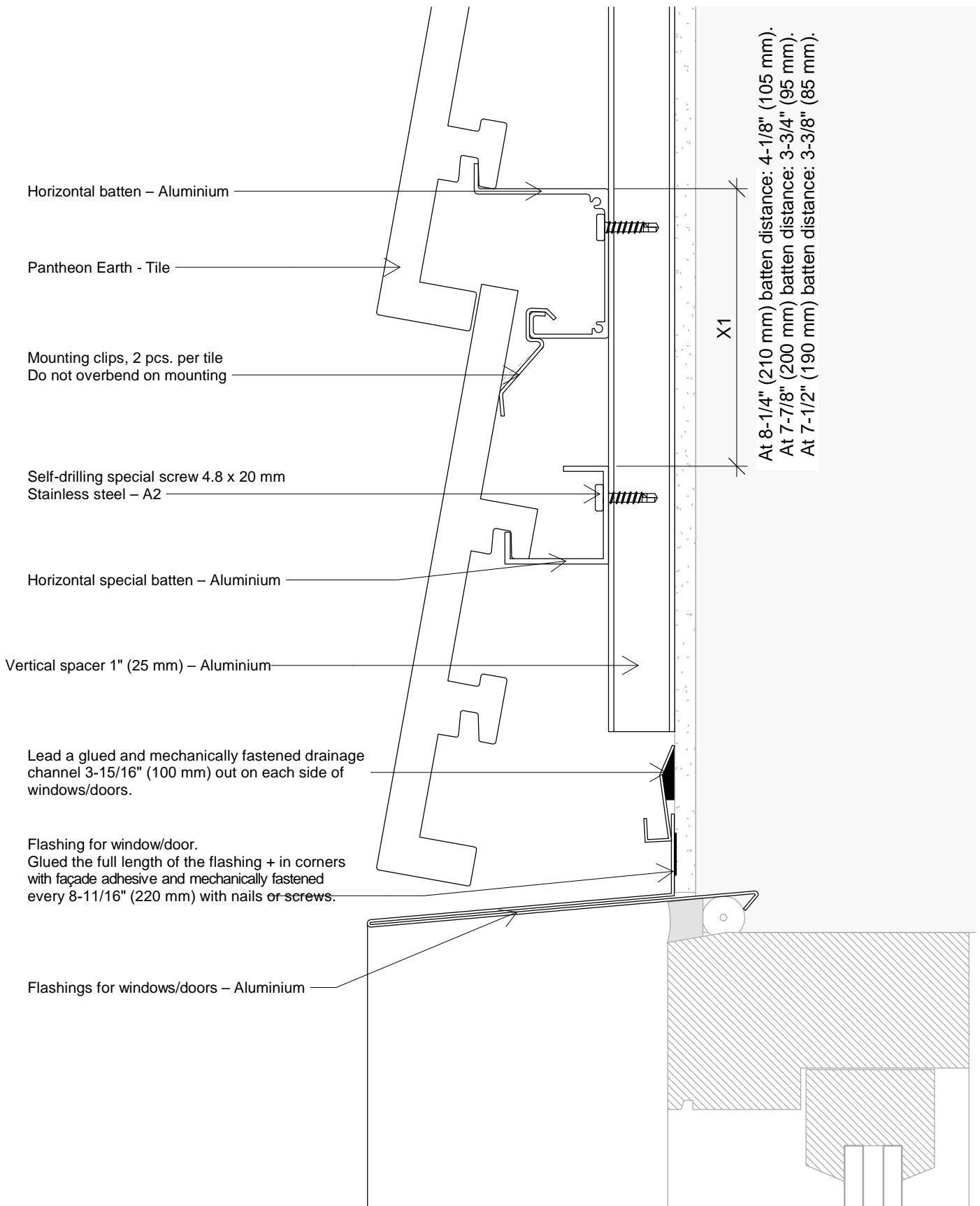
1 : 2

Pantheon Earth

Tel.: +45 96520710
E-Mail: Teknik@komproment.dk
Web: www.komproment.com

NOTE: This Details Folder will be updated regularly and the latest version is available on our website at <http://www.komproment.com>. You are responsible to review the most up to date version prior to commencing installation. Drawings are available on our website in the following formats: PDF and DWG. All drawings are for reference purposes only. The installer is responsible for ensuring compliance with all local and federal laws, rules, and regulations. KOMPROMENT is not responsible or liable for any misprints in this Installation Guide or its website.

KOMPROMENT
DANISH BUILDING DESIGN



The drawing is not to scale. All measurements are in inches (millimeter).

Copyright © Komproment Danish Building Design

PE - 04

Top window/door

Date: 06-07-2020

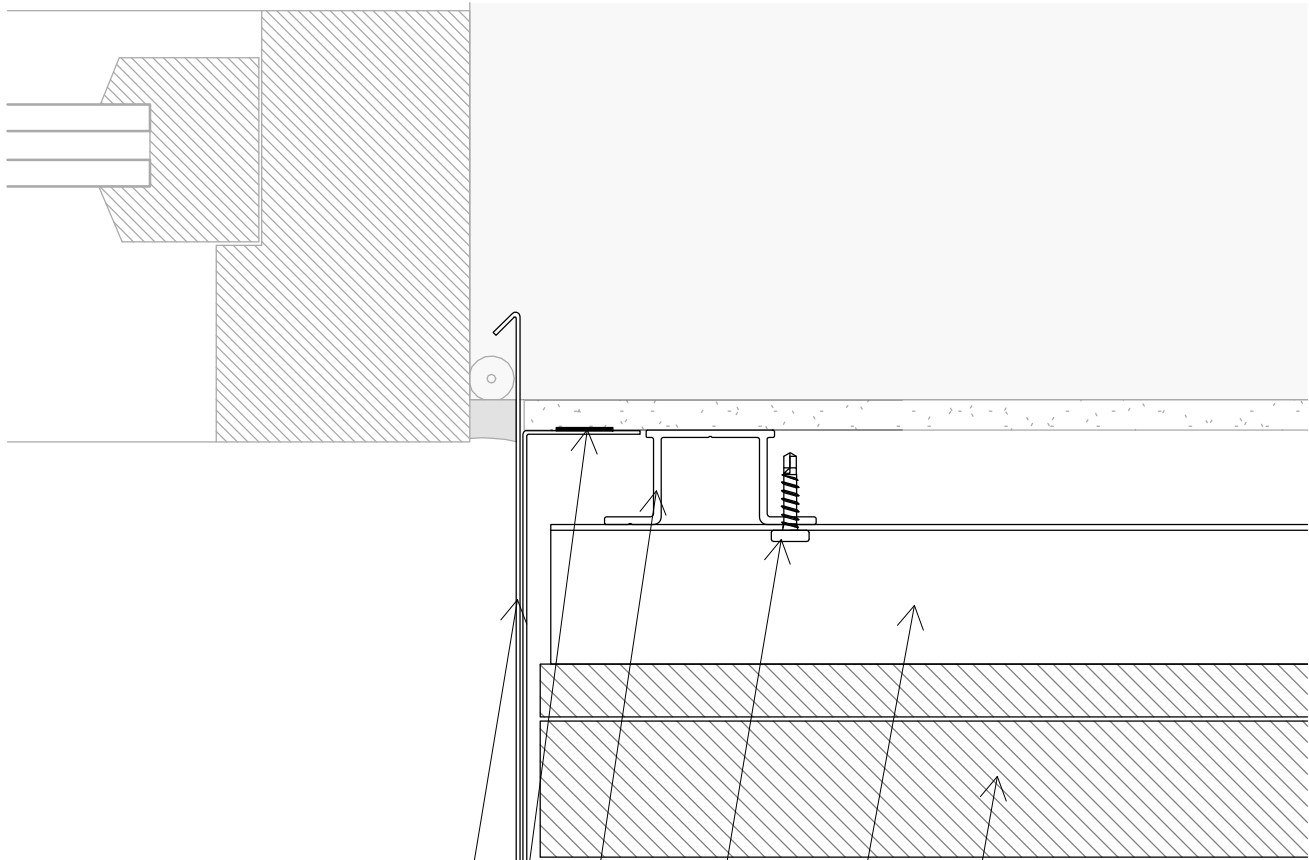
1 : 2

Pantheon Earth

Tel.: +45 96520710
E-Mail: Teknik@komproment.dk
Web: www.komproment.com

NOTE: This Details Folder will be updated regularly and the latest version is available on our website at <http://www.komproment.com>. You are responsible to review the most up to date version prior to commencing installation. Drawings are available on our website in the following formats: PDF and DWG. All drawings are for reference purposes only. The installer is responsible for ensuring compliance with all local and federal laws, rules, and regulations. KOMPROMENT is not responsible or liable for any misprints in this Installation Guide or its website.

KOMPROMENT
DANISH BUILDING DESIGN



Flashings for windows/doors – Aluminium

Flashing for window/door.

Glued the full length of the flashing + in corners with façade adhesive and mechanically fastened every 8-11/16" (220 mm) with nails or screws.

Vertical spacer 1" (25 mm) – Aluminium

Self-drilling special screw 4.8 x 20 mm

Stainless steel – A2

Horizontal batten – Aluminium

Pantheon Earth - Tile

The drawing is not to scale. All measurements are in inches (millimeter).

Copyright © Komproment Danish Building Design

PE - 05

Window/door - horizontal view

Date: 06-07-2020

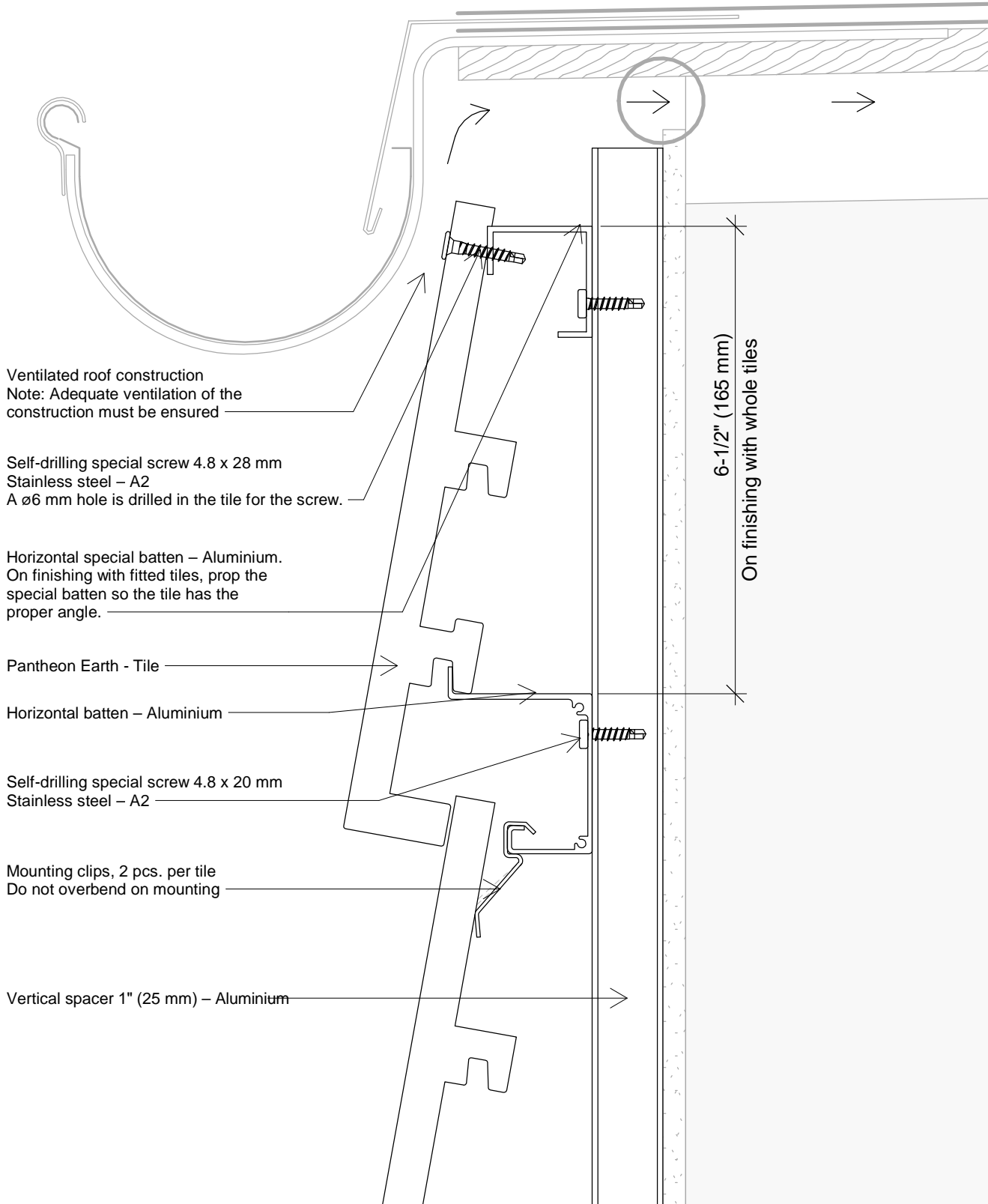
1 : 2

Pantheon Earth

Tel.: +45 96520710
E-Mail: Teknik@komproment.dk
Web: www.komproment.com

NOTE: This Details Folder will be updated regularly and the latest version is available on our website at <http://www.komproment.com>. You are responsible to review the most up to date version prior to commencing installation. Drawings are available on our website in the following formats: PDF and DWG. All drawings are for reference purposes only. The installer is responsible for ensuring compliance with all local and federal laws, rules, and regulations. KOMPROMENT is not responsible or liable for any misprints in this Installation Guide or its website.

KOMPROMENT
DANISH BUILDING DESIGN



Ventilated roof construction
 Note: Adequate ventilation of the construction must be ensured

Self-drilling special screw 4.8 x 28 mm
 Stainless steel – A2
 A $\varnothing 6$ mm hole is drilled in the tile for the screw.

Horizontal special batten – Aluminium.
 On finishing with fitted tiles, prop the special batten so the tile has the proper angle.

Pantheon Earth - Tile

Horizontal batten – Aluminium

Self-drilling special screw 4.8 x 20 mm
 Stainless steel – A2

Mounting clips, 2 pcs. per tile
 Do not overbend on mounting

Vertical spacer 1" (25 mm) – Aluminium

6-1/2" (165 mm)
 On finishing with whole tiles

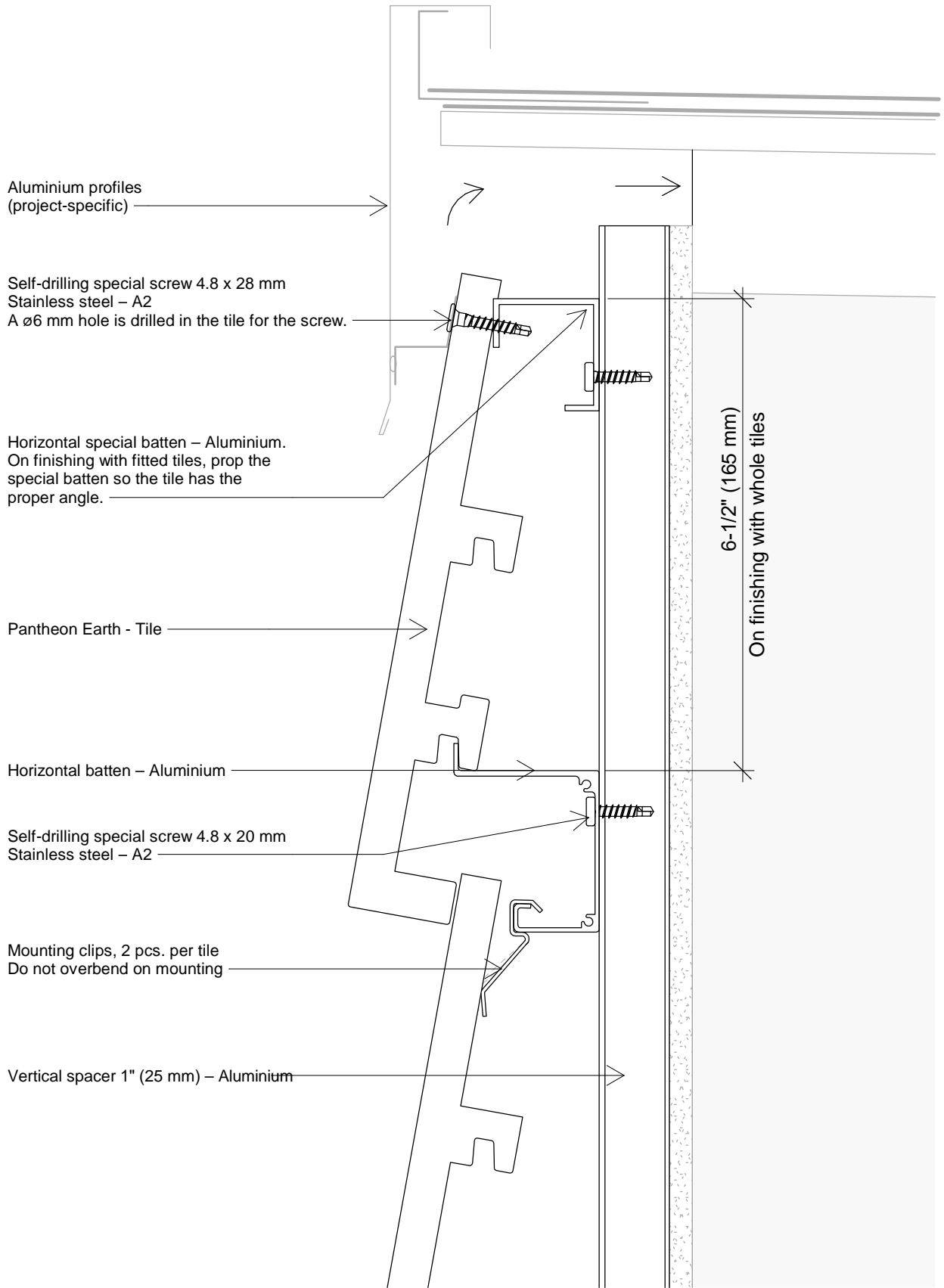
The drawing is not to scale. All measurements are in inches (millimeter).

Copyright © Komproment Danish Building Design

PE - 06	Base of roof/finishing at top		
Date: 06-07-2020	1 : 2	Pantheon Earth	Tel.: +45 96520710 E-Mail: Teknik@komproment.dk Web: www.komproment.com

NOTE: This Details Folder will be updated regularly and the latest version is available on our website at <http://www.komproment.com>. You are responsible to review the most up to date version prior to commencing installation. Drawings are available on our website in the following formats: PDF and DWG. All drawings are for reference purposes only. The installer is responsible for ensuring compliance with all local and federal laws, rules, and regulations. KOMPROMENT is not responsible or liable for any misprints in this Installation Guide or its website.





The drawing is not to scale. All measurements are in inches (millimeter).

Copyright © Komproment Danish Building Design

PE - 07

Gable

Date: 06-07-2020

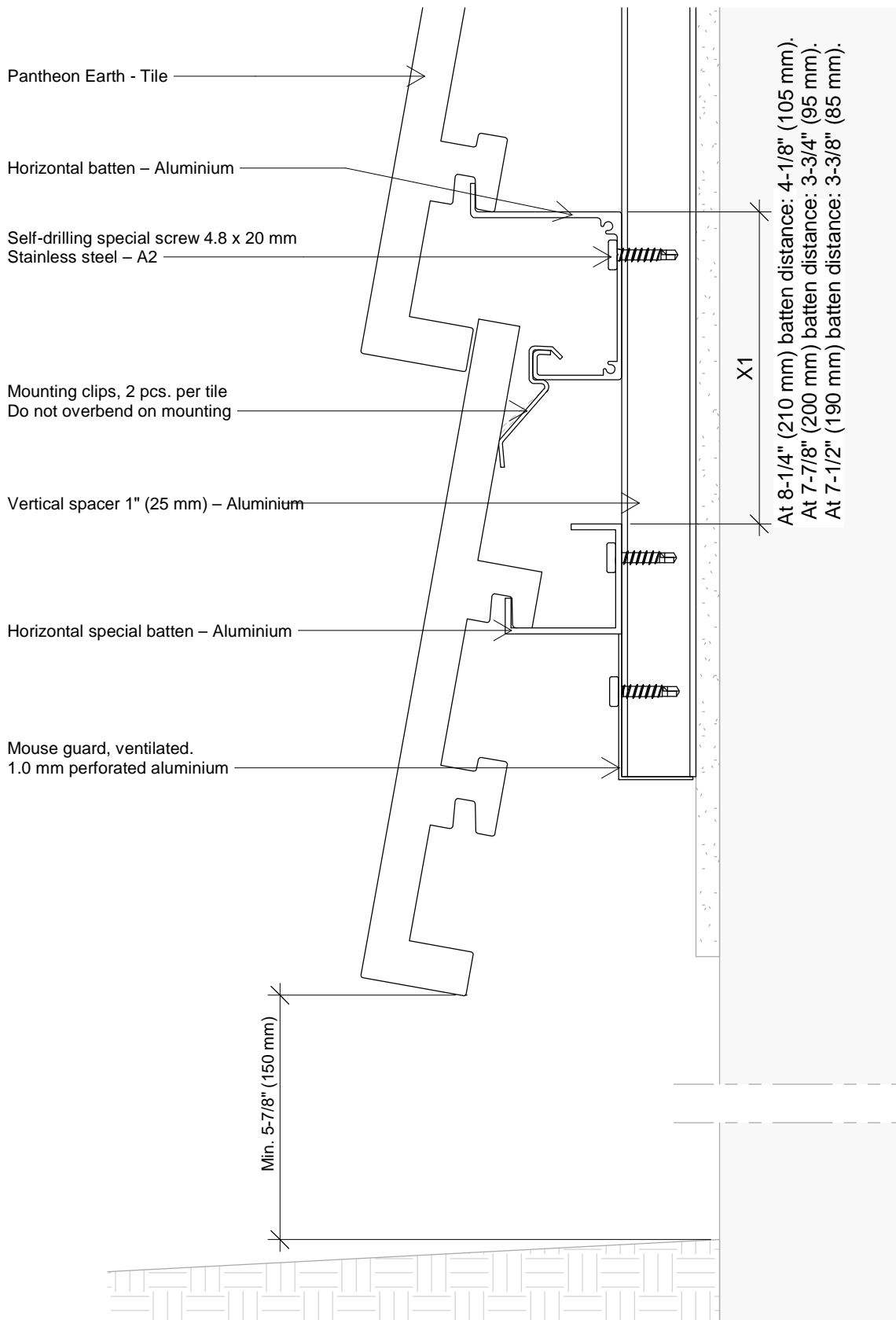
1 : 2

Pantheon Earth

Tel.: +45 96520710
E-Mail: Teknik@komproment.dk
Web: www.komproment.com

NOTE: This Details Folder will be updated regularly and the latest version is available on our website at <http://www.komproment.com>. You are responsible to review the most up to date version prior to commencing installation. Drawings are available on our website in the following formats: PDF and DWG. All drawings are for reference purposes only. The installer is responsible for ensuring compliance with all local and federal laws, rules, and regulations. KOMPROMENT is not responsible or liable for any misprints in this Installation Guide or its website.

KOMPROMENT
DANISH BUILDING DESIGN



The drawing is not to scale. All measurements are in inches (millimeter).

Copyright © Komproment Danish Building Design

PE - 08

Start façade

Date: 06-07-2020

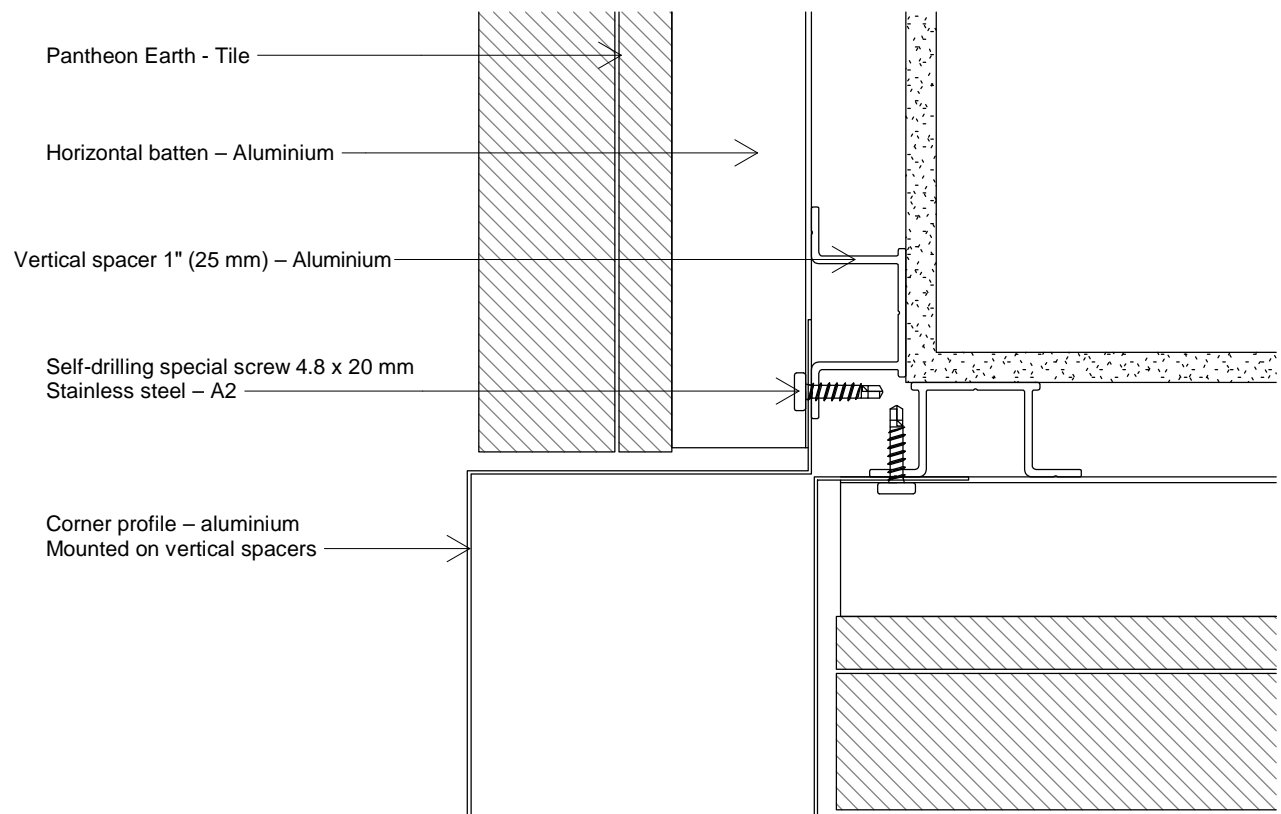
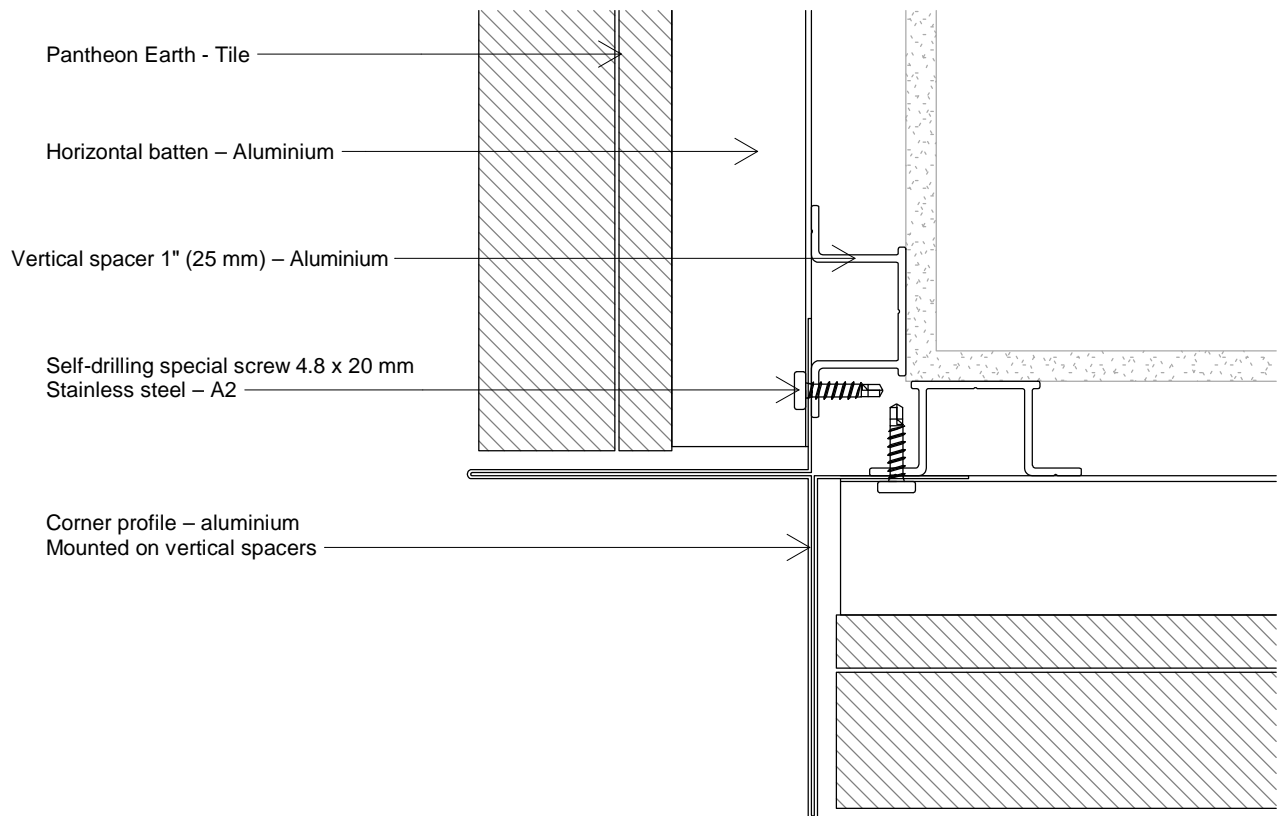
1 : 2

Pantheon Earth

Tel.: +45 96520710
E-Mail: Teknik@komproment.dk
Web: www.komproment.com

NOTE: This Details Folder will be updated regularly and the latest version is available on our website at <http://www.komproment.com>. You are responsible to review the most up to date version prior to commencing installation. Drawings are available on our website in the following formats: PDF and DWG. All drawings are for reference purposes only. The installer is responsible for ensuring compliance with all local and federal laws, rules, and regulations. KOMPROMENT is not responsible or liable for any misprints in this Installation Guide or its website.

KOMPROMENT
DANISH BUILDING DESIGN



The drawing is not to scale. All measurements are in inches (millimeter).

Copyright © Komproment Danish Building Design

PE - 09

Outside corner

Date: 06-07-2020

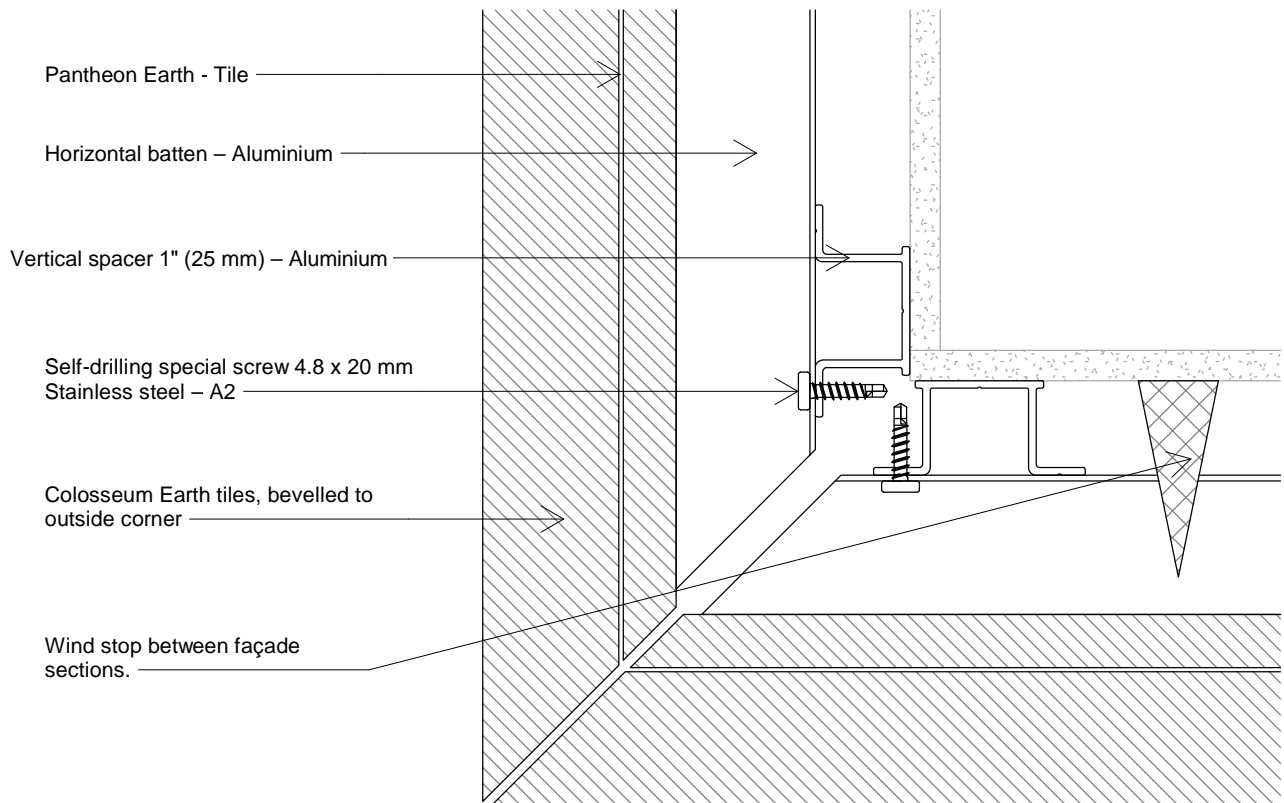
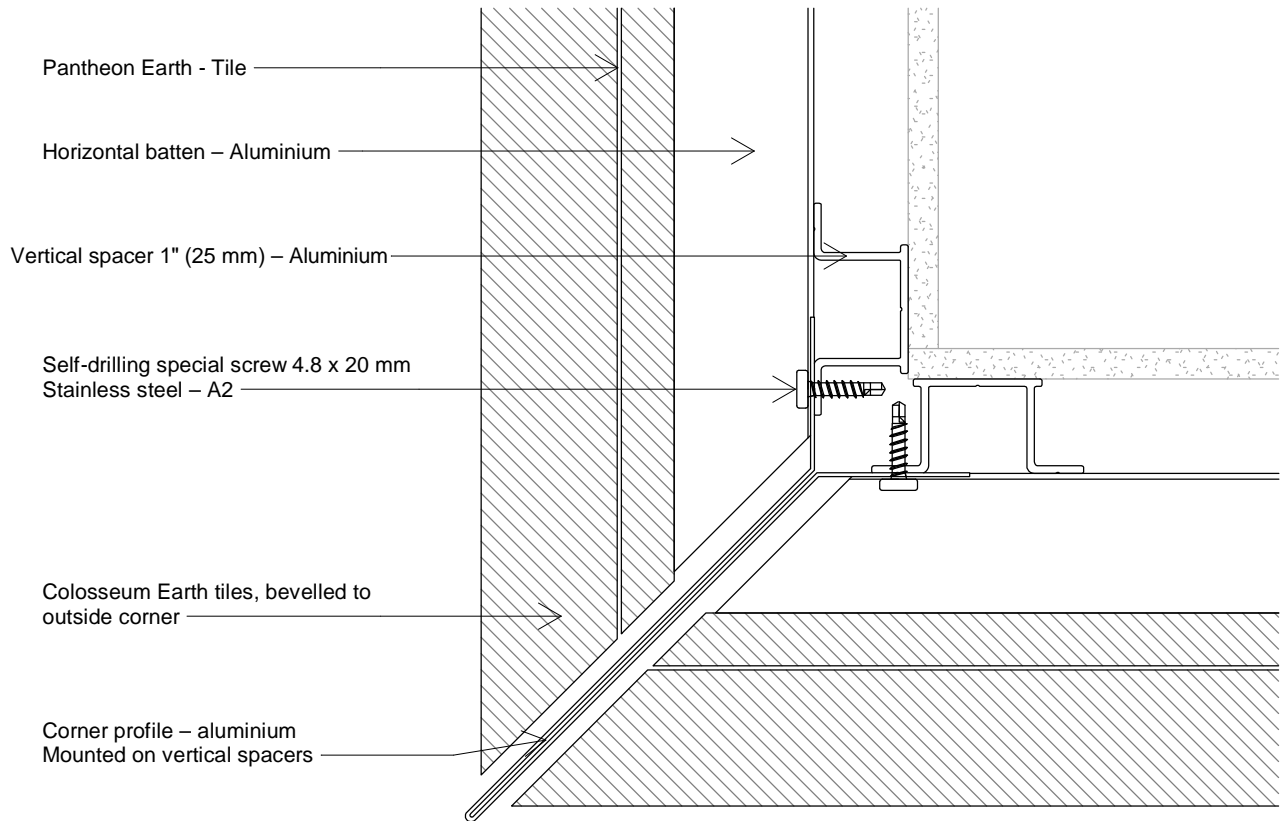
1 : 2

Pantheon Earth

Tel.: +45 96520710
E-Mail: Teknik@komproment.dk
Web: www.komproment.com

NOTE: This Details Folder will be updated regularly and the latest version is available on our website at <http://www.komproment.com>. You are responsible to review the most up to date version prior to commencing installation. Drawings are available on our website in the following formats: PDF and DWG. All drawings are for reference purposes only. The installer is responsible for ensuring compliance with all local and federal laws, rules, and regulations. KOMPROMENT is not responsible or liable for any misprints in this Installation Guide or its website.

KOMPROMENT
DANISH BUILDING DESIGN



The drawing is not to scale. All measurements are in inches (millimeter).

Copyright © Komproment Danish Building Design

PE - 10

Outside corner 2

Date: 06-07-2020

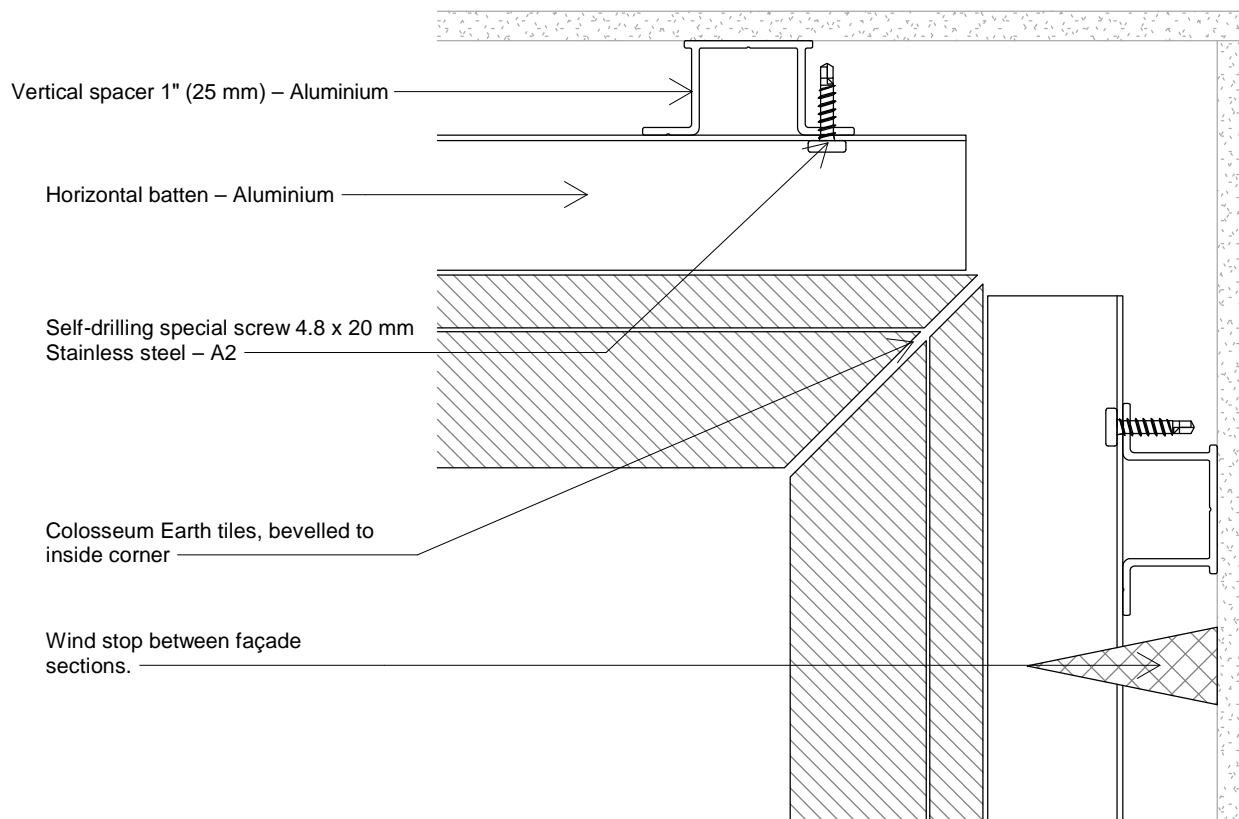
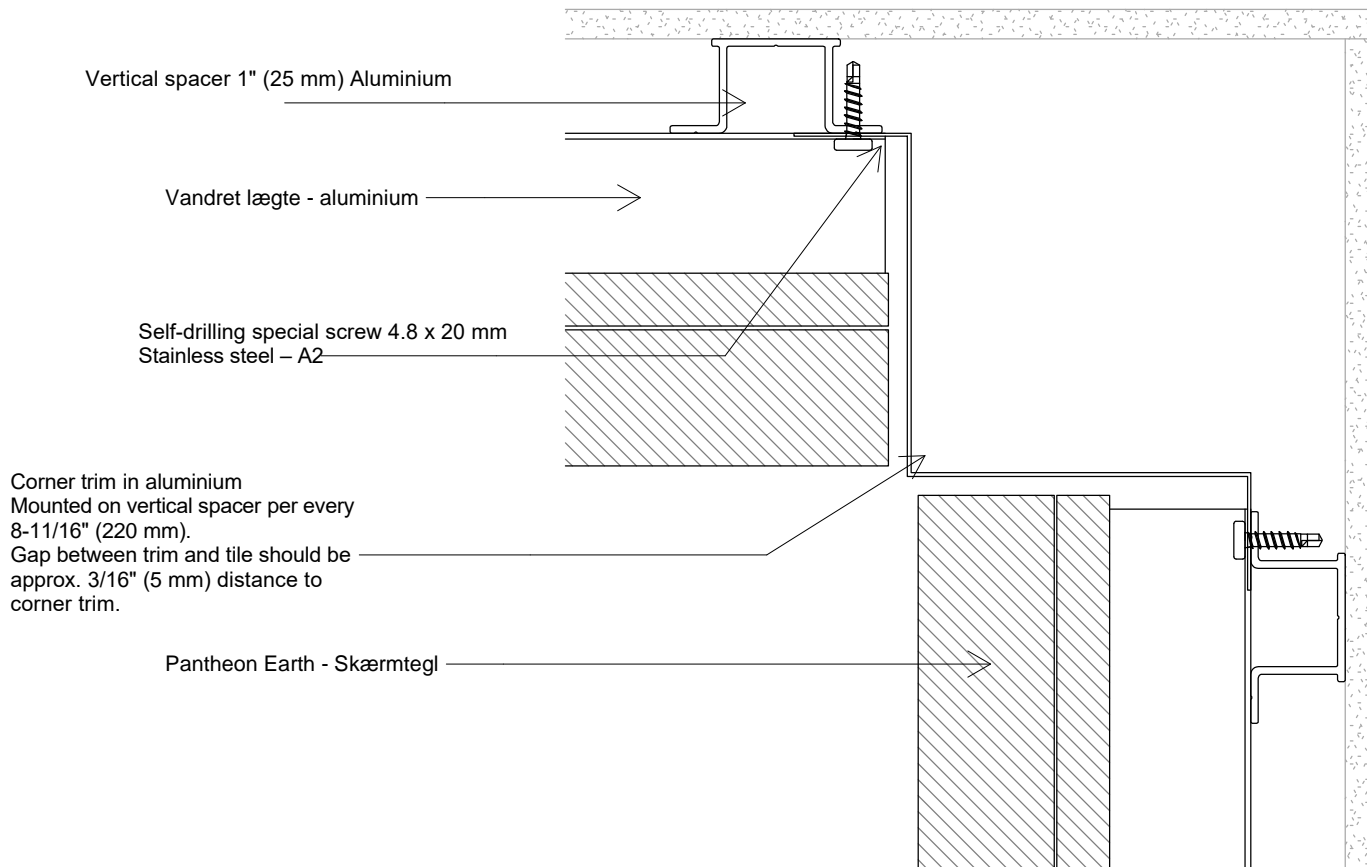
1 : 2

Pantheon Earth

Tel.: +45 96520710
E-Mail: Teknik@komproment.dk
Web: www.komproment.com

NOTE: This Details Folder will be updated regularly and the latest version is available on our website at <http://www.komproment.com>. You are responsible to review the most up to date version prior to commencing installation. Drawings are available on our website in the following formats: PDF and DWG. All drawings are for reference purposes only. The installer is responsible for ensuring compliance with all local and federal laws, rules, and regulations. KOMPROMENT is not responsible or liable for any misprints in this Installation Guide or its website.

KOMPROMENT
DANISH BUILDING DESIGN



The drawing is not to scale. All measurements are in inches (millimeter).

Copyright © Komproment Danish Building Design

PE - 11

Inside corner

Date: 06-07-2020

1 : 2

Pantheon Earth

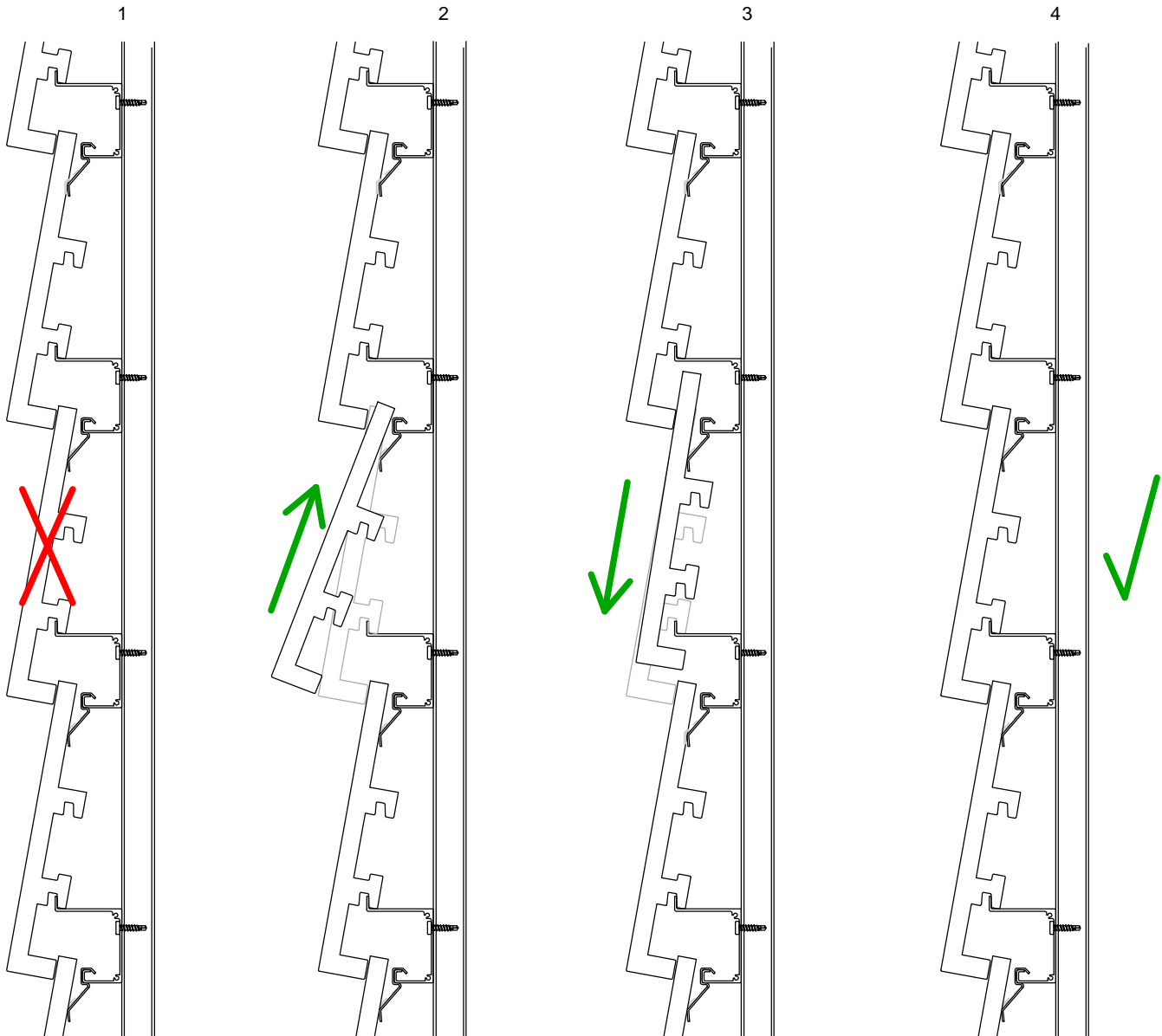
Tel.: +45 96520710
E-Mail: Teknik@komproment.dk
Web: www.komproment.com

NOTE: This Details Folder will be updated regularly and the latest version is available on our website at <http://www.komproment.com>. You are responsible to review the most up to date version prior to commencing installation. Drawings are available on our website in the following formats: PDF and DWG. All drawings are for reference purposes only. The installer is responsible for ensuring compliance with all local and federal laws, rules, and regulations. KOMPROMENT is not responsible or liable for any misprints in this Installation Guide or its website.

KOMPROMENT
DANISH BUILDING DESIGN

Replacement/retrofitting

- 1: Remove the damaged tile entirely
- 2: Push a new tile up under the overlying tile. (If clips are damaged/deformed, replace with 2 new clips.)
- 3: Pull the tile down into place so it grips the aluminium batten. If necessary, use a suction cup to grip the clinker securely
- 4: Replacement is now complete. Check that the tile is lying securely. The tile must lie properly and securely.



The drawing is not to scale. All measurements are in inches (millimeter).

Copyright © Komproment Danish Building Design

PE - 12

Replacement / retrofitting

Date: 06-07-2020

1 : 5

Pantheon Earth

Tel.: +45 96520710
E-Mail: Teknik@komproment.dk
Web: www.komproment.com

NOTE: This Details Folder will be updated regularly and the latest version is available on our website at <http://www.komproment.com>. You are responsible to review the most up to date version prior to commencing installation. Drawings are available on our website in the following formats: PDF and DWG. All drawings are for reference purposes only. The installer is responsible for ensuring compliance with all local and federal laws, rules, and regulations. KOMPROMENT is not responsible or liable for any misprints in this Installation Guide or its website.

KOMPROMENT
DANISH BUILDING DESIGN

General information

Warnings

Follow all instructions and warnings in the latest version of the Installation Guide and this detail folder (available online at www.komproment.com) in order to prevent accidents or injury.

Death or serious injury may result if you do not observe the following safety precautions:

- Mount all tiles onto the horizontal batten using the windclips provided by KOMPROMENT. Failure to use the windclips as instructed may result in tiles falling from the facade.
- Ensure that all windclips have been properly installed when mounting the tiles onto the horizontal batten. Failure to properly install the windclips may result in tiles falling from the facade.

Pantheon Earth is a façade system with tile façade clinkers for covering existing as well as new buildings.

The façade system can be mounted directly onto the existing façade, on wooden frames or using aluminium battens.

The drawings and instructions are prepared for façades mounted in Denmark, Norway and Sweden, on the basis of installation on a wooden substructure.

Attachment between the substructure and the load-bearing building sections is not part of these instructions and must fulfil the applicable standards and regulations at all times, as well as being documented in the specific projects.

Flatness tolerances for the back wall

Always check the substructure before mounting battens. Straightness requirement for the underlying structure, vertical and horizontal, tolerance: +/- 1/8 in. (3 mm), measured with straight-edge over 78-3/4 in. (2 meters).

Flashings

All flashings around windows, døre, gables, eaves, etc., in Komproment's drawings and instructions are examples only. All flashings must be reviewed, designed and planned out for the individual project. Flashing is therefore not kept in stock by Komproment.

Technical support

If you need advice and/or technical support you can always count on our assistance when you need it.

Komproment can help with:

- Getting started on installation at the start of larger projects
- Input for the documentation
- Other problems/issues.

For technical support, contact us on tel.: +45 96520710 or by email to teknik@komproment.dk

Opening times: Monday-Thursday from 8.00-16.00, Friday from 8.00-15.30.

General

Komproment cannot be held responsible for project design or for project details, which are the responsibility of the architect and/or consulting engineer supervising the project at all times.

Komproment's drawings and instructions must be considered as guidelines for the purpose of sharing Komproment's experience. Komproment is therefore solely responsible for the delivered building materials and the quality of these.

The drawing is not to scale. All measurements are in inches (millimeter).

Copyright © Komproment Danish Building Design

PE - 13

General information

Date: 06-07-2020

Pantheon Earth

Tel.: +45 96520710
E-Mail: teknik@komproment.dk
Web: www.komproment.com

NOTE: This Details Folder will be updated regularly and the latest version is available on our website at <http://www.komproment.com>. You are responsible to review the most up to date version prior to commencing installation. Drawings are available on our website in the following formats: PDF and DWG. All drawings are for reference purposes only. The installer is responsible for ensuring compliance with all local and federal laws, rules, and regulations. KOMPROMENT is not responsible or liable for any misprints in this Installation Guide or its website.

KOMPROMENT
DANISH BUILDING DESIGN